

Raccordi universali ad ogiva Serie 1000 in ottone

Raccordi ad ogiva per tubi plastici, rame, ottone: \varnothing 4, 6, 8, 10, 12 mm
Filetti dei raccordi: cilindrici (G1/8, G1/4), conici (R1/8, R1/4, R3/8, R1/2)



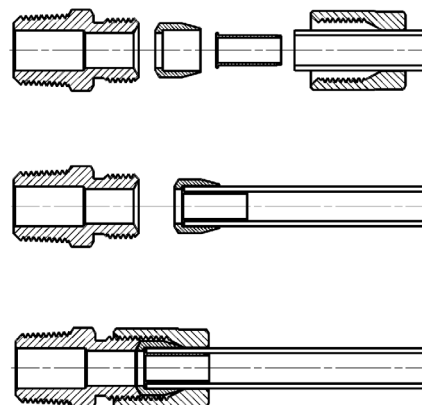
I raccordi universali ad ogiva Serie 1000 sono utilizzati con tubi in materiale plastico di ogni tipo e anche con tubi in rame, ottone, acciaio e alluminio. Idonei per diverse applicazioni, questi raccordi possono essere impiegati all'interno di circuiti pneumatici, oleodinamici e idraulici a bassa pressione.

Le sedi dei raccordi, le ogive e i dadi sono conformi alle norme DIN 3870-3861.

CARATTERISTICHE GENERALI

| | |
|-----------------------|--|
| Diametri | \varnothing 4 - 6 - 8 - 10 - 12 mm |
| Filettature | GAS conico ISO 7 (BSPT) GAS cilindrico ISO 228 (BSP) |
| Temperatura | vedere caratteristiche dei tubi impiegati |
| Tubo di collegamento | rame ricotto e tubi plastici (con rinforzo) |
| Fluido | aria compressa e altri fluidi a bassa pressione |
| Materiali | OT nichelato |
| Pressione d'esercizio | max 40 bar |

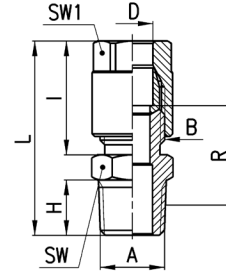
Raccordi con tubo di collegamento



Raccordi Mod. 1050



Diritto Maschio Conico

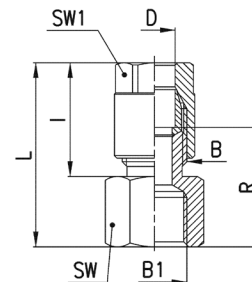


| DIMENSIONI | | | | | | | | | | |
|-------------|----|------|---------|------|------|------|------|----|-----|----------|
| Mod. | D | A | B | H | I | L | R | SW | SW1 | Peso (g) |
| 1050 4-1/8 | 4 | R1/8 | 1/8 | 7,5 | 19 | 31 | 14 | 12 | 12 | 19 |
| 1050 6-1/8 | 6 | R1/8 | 1/8 | 7,5 | 19 | 31 | 14 | 12 | 12 | 18 |
| 1050 6-1/4 | 6 | R1/4 | 1/8 | 11 | 19 | 35 | 16,5 | 14 | 12 | 23 |
| 1050 8-1/8 | 8 | R1/8 | 1/4 | 7,5 | 23 | 35 | 15,5 | 14 | 14 | 29 |
| 1050 8-1/4 | 8 | R1/4 | 1/4 | 11 | 23 | 39 | 18 | 14 | 14 | 33 |
| 1050 8-3/8 | 8 | R3/8 | 1/4 | 11,5 | 23 | 39,5 | 18 | 17 | 14 | 40 |
| 1050 10-1/4 | 10 | R1/4 | 3/8 | 11 | 25,5 | 41,5 | 18 | 17 | 17 | 51 |
| 1050 10-3/8 | 10 | R3/8 | 3/8 | 11,5 | 25,5 | 42 | 18 | 17 | 17 | 55 |
| 1050 10-1/2 | 10 | R1/2 | 3/8 | 14 | 25,5 | 45 | 18 | 22 | 17 | 65 |
| 1050 12-1/4 | 12 | R1/4 | M18x1,5 | 11 | 24,5 | 40,5 | 12 | 19 | 19 | 56 * |
| 1050 12-3/8 | 12 | R3/8 | M18x1,5 | 11,5 | 24,5 | 41 | 12 | 19 | 19 | 58 * |
| 1050 12-1/2 | 12 | R1/2 | M18x1,5 | 14 | 24,5 | 44 | 12 | 22 | 19 | 68 * |

* = con ogiva biconica

Raccordi Mod. 1063

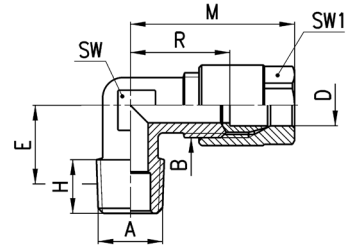
Diritto Femmina Cilindrico



| DIMENSIONI | | | | | | | | | |
|------------|---|------|-----|----|------|------|----|-----|----------|
| Mod. | D | B1 | B | I | L | R | SW | SW1 | Peso (g) |
| 1063 4-1/8 | 4 | G1/8 | 1/8 | 19 | 29 | 18,5 | 13 | 12 | 19 |
| 1063 6-1/8 | 6 | G1/8 | 1/8 | 19 | 29 | 18,5 | 13 | 12 | 18 |
| 1063 6-1/4 | 6 | G1/4 | 1/8 | 19 | 30,5 | 20 | 17 | 12 | 25 |
| 1063 8-1/8 | 8 | G1/8 | 1/4 | 23 | 33 | 20 | 14 | 14 | 31 |
| 1063 8-1/4 | 8 | G1/4 | 1/4 | 23 | 34,5 | 21,5 | 17 | 14 | 35 |

Raccordi Mod. 1020

Gomito Maschio Fisso Conico

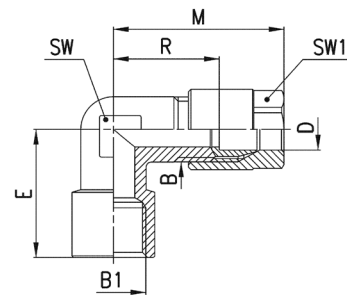


| DIMENSIONI | | | | | | | | | | | |
|-------------|----|------|---------|------|------|------|------|----|-----|----------|---|
| Mod. | D | A | B | E | H | M | R | SW | SW1 | Peso (g) | |
| 1020 4-1/8 | 4 | R1/8 | 1/8 | 11,5 | 7,5 | 29,5 | 19 | 9 | 12 | 21 | |
| 1020 6-1/8 | 6 | R1/8 | 1/8 | 11,5 | 7,5 | 29,5 | 19 | 9 | 12 | 19 | |
| 1020 6-1/4 | 6 | R1/4 | 1/8 | 13,5 | 11 | 29,5 | 19 | 12 | 12 | 27 | |
| 1020 8-1/8 | 8 | R1/8 | 1/4 | 11,5 | 7,5 | 33 | 20 | 11 | 14 | 35 | |
| 1020 8-1/4 | 8 | R1/4 | 1/4 | 13,5 | 11 | 33 | 20 | 12 | 14 | 36 | |
| 1020 8-3/8 | 8 | R3/8 | 1/4 | 15,5 | 11,5 | 35 | 22 | 14 | 14 | 50 | |
| 1020 10-1/4 | 10 | R1/4 | 3/8 | 15 | 11 | 38 | 22,5 | 13 | 17 | 59 | |
| 1020 10-3/8 | 10 | R3/8 | 3/8 | 15,5 | 11,5 | 38 | 22,5 | 14 | 17 | 58 | |
| 1020 10-1/2 | 10 | R1/2 | 3/8 | 16 | 14 | 38 | 22,5 | 16 | 17 | 78 | |
| 1020 12-1/4 | 12 | R1/4 | M18x1,5 | 15 | 11 | 37 | 16,5 | 15 | 19 | 66 | * |
| 1020 12-3/8 | 12 | R3/8 | M18x1,5 | 15 | 11,5 | 37 | 16,5 | 15 | 19 | 66 | * |
| 1020 12-1/2 | 12 | R1/2 | M18x1,5 | 16 | 14 | 37 | 16,5 | 16 | 19 | 75 | * |

* = con ogiva biconica

Raccordi Mod. 1093

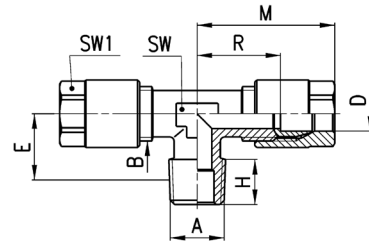
Gomito Femmina Cilindrico



| DIMENSIONI | | | | | | | | | | |
|------------|---|------|-----|----|------|------|----|-----|----------|--|
| Mod. | D | B1 | B | E | M | R | SW | SW1 | Peso (g) | |
| 1093 4-1/8 | 4 | G1/8 | 1/8 | 19 | 29,5 | 18,5 | 12 | 12 | 31 | |
| 1093 6-1/8 | 6 | G1/8 | 1/8 | 19 | 29,5 | 19 | 12 | 12 | 25 | |
| 1093 6-1/4 | 6 | G1/4 | 1/8 | 23 | 30,5 | 20 | 13 | 12 | 39 | |
| 1093 8-1/8 | 8 | G1/8 | 1/4 | 19 | 33 | 20 | 11 | 14 | 39 | |
| 1093 8-1/4 | 8 | G1/4 | 1/4 | 23 | 35 | 22 | 13 | 14 | 44 | |

Raccordi Mod. 1000

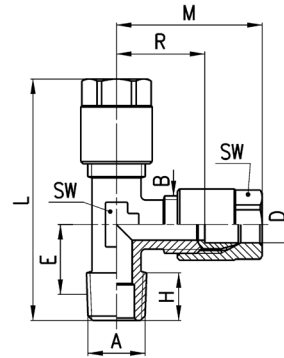
T Maschio Fisso Conico



| DIMENSIONI | | | | | | | | | | |
|-------------|----|------|-----|------|-----|------|------|----|-----|----------|
| Mod. | D | A | B | E | H | M | R | SW | SW1 | Peso (g) |
| 1000 4-1/8 | 4 | R1/8 | 1/8 | 11,5 | 7,5 | 29,5 | 19 | 9 | 12 | 35 |
| 1000 6-1/8 | 6 | R1/8 | 1/8 | 11,5 | 7,5 | 29,5 | 19 | 9 | 12 | 33 |
| 1000 8-1/4 | 8 | R1/4 | 1/4 | 13,5 | 11 | 33 | 20 | 12 | 14 | 63 |
| 1000 10-1/4 | 10 | R1/4 | 3/8 | 15 | 11 | 38 | 22,5 | 13 | 17 | 104 |

Raccordi Mod. 1010

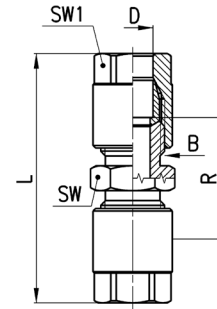
T Maschio Laterale Fisso Conico



| DIMENSIONI | | | | | | | | | | | |
|-------------|----|------|-----|------|-----|------|------|------|----|-----|----------|
| Mod. | D | A | B | E | H | L | M | R | SW | SW1 | Peso (g) |
| 1010 4-1/8 | 4 | R1/8 | 1/8 | 11,5 | 7,5 | 48 | 29,5 | 19 | 9 | 12 | 37 |
| 1010 6-1/8 | 6 | R1/8 | 1/8 | 11,5 | 7,5 | 48 | 29,5 | 19 | 9 | 12 | 33 |
| 1010 8-1/4 | 8 | R1/4 | 1/4 | 13,5 | 11 | 54,5 | 33 | 20 | 12 | 14 | 61 |
| 1010 10-1/4 | 10 | R1/4 | 3/8 | 15 | 11 | 61,5 | 38 | 22,5 | 13 | 17 | 103 |

Raccordi Mod. 1230

Diritto Intermedio

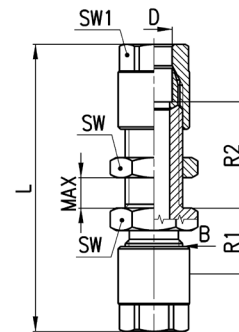


| DIMENSIONI | | | | | | | |
|------------|----|---------|------|------|----|-----|----------|
| Mod. | D | B | L | R | SW | SW1 | Peso (g) |
| 1230 4 | 4 | 1/8 | 42,5 | 21,5 | 12 | 12 | 29 |
| 1230 6 | 6 | 1/8 | 42,5 | 21,5 | 12 | 12 | 26 |
| 1230 8 | 8 | 1/4 | 51 | 25 | 14 | 14 | 48 |
| 1230 10 | 10 | 3/8 | 56 | 25 | 17 | 17 | 83 |
| 1230 12 | 12 | M18x1,5 | 54 | 13 | 19 | 19 | 140 |

* = con ogiva biconica

Raccordi Mod. 1250

Diritto Passaparete

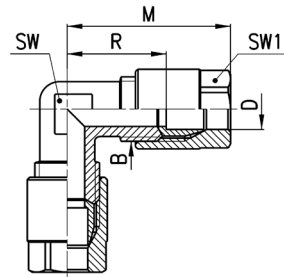


| DIMENSIONI | | | | | | | | | |
|------------|----|-----|------|------|------|-----|----|-----|----------|
| Mod. | D | B | L | R1 | R2 | MAX | SW | SW1 | Peso (g) |
| 1250 4 | 4 | 1/8 | 57,5 | 12,5 | 23 | 12 | 14 | 12 | 40 |
| 1250 6 | 6 | 1/8 | 57,5 | 13 | 23,5 | 12 | 14 | 12 | 38 |
| 1250 8 | 8 | 1/4 | 65 | 15 | 24 | 13 | 17 | 14 | 67 |
| 1250 10 | 10 | 3/8 | 72,5 | 15 | 26,5 | 13 | 22 | 17 | 119 |

Raccordi Mod. 1220



Gomito Intermedio



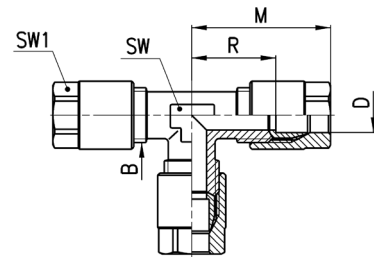
| DIMENSIONI | | | | | | | |
|------------|----|---------|------|------|----|-----|----------|
| Mod. | D | B | M | R | SW | SW1 | Peso (g) |
| 1220 4 | 4 | 1/8 | 29,5 | 19 | 9 | 12 | 31 |
| 1220 6 | 6 | 1/8 | 29,5 | 19 | 9 | 12 | 29 |
| 1220 8 | 8 | 1/4 | 33 | 20 | 11 | 14 | 53 |
| 1220 10 | 10 | 3/8 | 38 | 22,5 | 14 | 17 | 92 |
| 1220 12 | 12 | M18x1,5 | 37 | 16,5 | 16 | 19 | 99 * |

* = con ogiva biconica

Raccordi Mod. 1210



T Intermedio



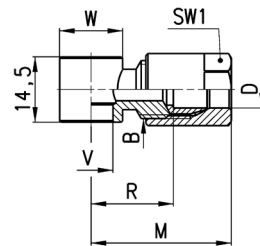
| DIMENSIONI | | | | | | | |
|------------|----|---------|------|------|----|-----|----------|
| Mod. | D | B | M | R | SW | SW1 | Peso (g) |
| 1210 4 | 4 | 1/8 | 29,5 | 19 | 9 | 12 | 45 |
| 1210 6 | 6 | 1/8 | 29,5 | 19 | 9 | 12 | 42 |
| 1210 8 | 8 | 1/4 | 33 | 20 | 12 | 14 | 79 |
| 1210 10 | 10 | 3/8 | 38 | 22,5 | 13 | 17 | 133 |
| 1210 12 | 12 | M18x1,5 | 37 | 16,5 | 16 | 19 | 144 * |

* = con ogiva biconica

Raccordi Mod. 1170



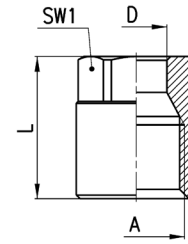
Anello Singolo



| DIMENSIONI | | | | | | | | | | |
|------------|---|-----|------|------|------|----|-----|----------|------------------------------|--|
| Mod. | D | B | R | M | V | W | SW1 | Peso (g) | assemblabile con Mod. | |
| 1170 6-1/8 | 6 | 1/8 | 17.5 | 28 | 9.8 | 14 | 12 | 20 | 1631, 1635, SCU, SVU, SCO... | |
| 1170 6-1/4 | 6 | 1/8 | 20 | 30.5 | 13.2 | 18 | 12 | 24 | 1631, 1635, SCU, SVU, SCO... | |
| 1170 8-1/8 | 8 | 1/4 | 18 | 31 | 9.8 | 14 | 14 | 31 | 1635, SCU, SVU, SCO... | |

Accessori Mod. 1303

Dado di bloccaggio



| DIMENSIONI | | | | | |
|-----------------|----|---------|------|-----|----------|
| Mod. | D | A | L | SW1 | Peso (g) |
| 1303 4-1/8 | 4 | 1/8 | 15,5 | 12 | 8 |
| 1303 6-1/8 | 6 | 1/8 | 15,5 | 12 | 8 |
| 1303 8-1/4 | 8 | 1/4 | 19 | 14 | 14 |
| 1303 10-3/8 | 10 | 3/8 | 21,5 | 17 | 24 |
| 1303 12-M18x1,5 | 12 | M18x1,5 | 19,5 | 19 | 27 |

Accessori Mod. 1310

Ogiva e Bicono

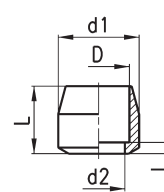


FIG. 1

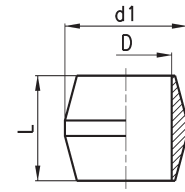


FIG. 2

| DIMENSIONI | | | | | | |
|-------------|----|------|-----|-----|------|----------|
| Mod. | D | d1 | d2 | l | L | Peso (g) |
| 1310 4 | 4 | 7,8 | 3 | 1 | 8 | 2 |
| 1310 6 | 6 | 7,8 | 4,5 | 1 | 7 | 1 |
| 1310 8 | 8 | 10,8 | 7 | 1,5 | 9 | 3 |
| 1310 10 | 10 | 13,8 | 9 | 1,5 | 11,5 | 5 |
| 1310 12-M18 | 12 | 16,3 | 12 | - | 11 | 6 * |

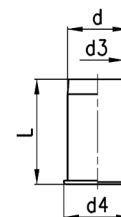
Fig. 1 = ogiva

Fig. 2 = ogiva bicono

* = con ogiva bicono

Accessori Mod. 1320

Inserti



| DIMENSIONI | | | | | |
|------------|----|----|----|----|----------|
| Mod. | d | d3 | d4 | L | Peso (g) |
| 1320 4 | 4 | 3 | 5 | 12 | 1 |
| 1320 6 | 6 | 5 | 7 | 13 | 1 |
| 1320 8 | 8 | 7 | 9 | 14 | 1 |
| 1320 10 | 10 | 9 | 11 | 16 | 2 |