

Raccords en laiton accessoires Séries 2000 et FR2000

Raccordement: métrique (M5),
BSP (G1/8", G1/4", G3/8", G1/2", G3/4", G1"),
BSPT (R1/8", R1/4", R3/8", R1/2", R3/4", R1")

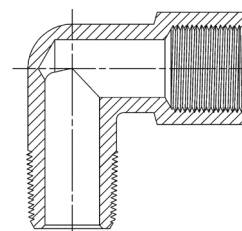


Lors d'opération de maintenance ou de réalisation d'une installation, il est souvent difficile de prévoir les raccords nécessaires. C'est pour cette raison que les raccords accessoires assurent un rôle important dans la mise en œuvre d'une installation. La gamme accessoires, constituée de raccords droits, en L, en T, en croix... etc... est disponible en différents modèles allant jusqu'à 1".

CARACTERISTIQUES GENERALES

Raccordement	Gaz conique ISO 7 (BSPT) Gaz cylindrique ISO 228 (BSP)
Température	-40 à + 120°C
Fluide	Air comprimé et autres fluides basse pression
Matériaux	Laiton nickelé
Pression	80 bar

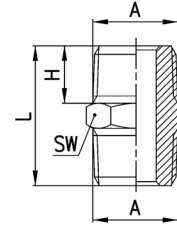
Raccords accessoires



Raccord Mod. 2500



Mamelon Egal Conique

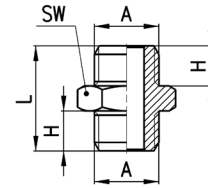


DIMENSIONS					
Mod.	A	H	L	SW	Poids (g)
2500 1/8	R1/8	7,5	19,5	12	9
2500 1/4	R1/4	11	27	14	16
2500 3/8	R3/8	11,5	28	17	21
2500 1/2	R1/2	14	33,5	22	41
2500 3/4	R3/4	16,5	40	27	80
2500 1	R1	19	45,5	34	125

Raccord Mod. 2501



Mamelon Egal Métrique-Cylindrique

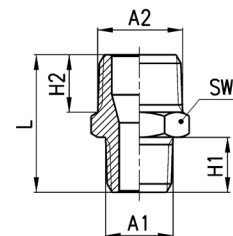


DIMENSIONS					
Mod.	A	H	L	SW	Poids (g)
2501 M5	M5	4	11,5	8	2
2501 1/8	G1/8	6	16,5	13	9
2501 1/4	G1/4	8	21	17	15
2501 3/8	G3/8	9	23	19	21
2501 1/2	G1/2	10	25,5	24	35

Raccord Mod. 2510



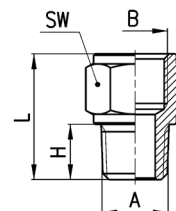
Mamelon Inégal Conique



DIMENSIONS							
Mod.	A1	A2	H2	H1	L	SW	Poids (g)
2510 1/8-1/4	R1/8	R1/4	11	7,5	23,5	14	14
2510 1/8-3/8	R1/8	R3/8	11,5	7,5	24	17	18
2510 1/4-3/8	R1/4	R3/8	11,5	11	27,5	17	20
2510 1/4-1/2	R1/4	R1/2	14	11	30,5	22	34
2510 3/8-1/2	R3/8	R1/2	14	11,5	31	22	34
2510 1/2-3/4	R1/2	R3/4	16,5	14	37,5	27	67

Raccord Mod. 2520

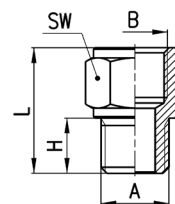
Augmentation Conique
côté femelle > côté mâle



DIMENSIONS						
Mod.	A	B	H	L	SW	Poids (g)
2520 1/8-1/8	R1/8	G1/8	7,5	17,5	13	9
2520 1/8-1/4	R1/8	G1/4	7,5	19	17	15
2520 1/8-3/8	R1/8	G3/8	7,5	20	20	19
2520 1/4-1/4	R1/4	G1/4	11	22,5	17	17
2520 1/4-3/8	R1/4	G3/8	11	23,5	20	21
2520 1/4-1/2	R1/4	G1/2	11	27,5	24	35
2520 3/8-3/8	R3/8	G3/8	11,5	24	20	23
2520 3/8-1/2	R3/8	G1/2	11,5	28	24	37
2520 1/2-1/2	R1/2	G1/2	14	30,5	24	41

Raccord Mod. 2521

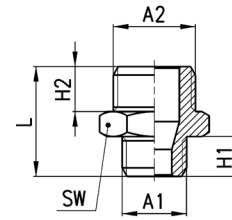
Augmentation Cylindrique
côté femelle > côté mâle



DIMENSIONS						
Mod.	A	B	H	L	SW	Poids (g)
2521 M5-1/8	M5	G1/8	4	14	13	7
2521 1/8-1/8	G1/8	G1/8	6	16	13	8
2521 1/8-1/4	G1/8	G1/4	6	17,5	17	14
2521 1/8-3/8	G1/8	G3/8	6	18,5	20	30
2521 1/4-1/4	G1/4	G1/4	8	19,5	17	16
2521 1/4-3/8	G1/4	G3/8	8	20,5	20	20
2521 1/4-1/2	G1/4	G1/2	8	24,5	24	33
2521 3/8-3/8	G3/8	G3/8	9	21,5	20	22
2521 3/8-1/2	G3/8	G1/2	9	25,5	24	35
2521 1/2-1/2	G1/2	G1/2	10	26,5	24	36

Raccord Mod. 2511

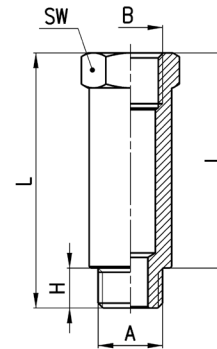
Mamelon Inégal Métrique-Cylindrique



DIMENSIONS							
Mod.	A1	A2	H1	H2	L	SW	Poids (g)
2511 M5-1/8	M5	G1/8	4	6	14,5	13	8
2511 1/8-1/4	G1/8	G1/4	6	8	19	17	15
2511 1/8-3/8	G1/8	G3/8	6	9	20	19	19
2511 1/4-3/8	G1/4	G3/8	8	9	22	19	20
2511 1/4-1/2	G1/4	G1/2	8	10	23,5	24	32
2511 3/8-1/2	G3/8	G1/2	9	10	24,5	24	34

Raccord Mod. 2525

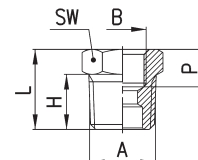
Prolongateur Mâle/femelle



DIMENSIONS							
Mod.	A	B	H	I	L	SW	Poids (g)
2525 1/8-16	G1/8	G1/8	6	16	22	13	12
2525 1/8-36	G1/8	G1/8	6	36	42	13	24
2525 1/4-27	G1/4	G1/4	8	27	35	17	30
2525 1/4-43	G1/4	G1/4	8	43	51	17	45

Raccord Mod. 2530

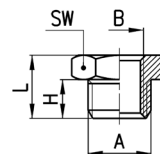
Réduction Conique
côté femelle < côté mâle



DIMENSIONS							
Mod.	A	B	H	P (min)	L	SW	Poids (g)
2530 1/4-1/8	R1/4	G1/8	11	6	16	14	9
2530 3/8-1/8	R3/8	G1/8	11,5	8,5	16,5	17	17
2530 1/2-1/8	R1/2	G1/8	14	9,5	19,5	22	12
2530 3/8-1/4	R3/8	G1/4	11,5	7	16,5	17	34
2530 1/2-1/4	R1/2	G1/4	14	9,5	19,5	22	30
2530 1/2-3/8	R1/2	G3/8	14	8	19,5	22	24
2530 3/4-3/8	R3/4	G3/8	16,5	11,5	23	27	67
2530 3/4-1/2	R3/4	G1/2	16,5	9,5	23,5	27	48
2530 1-1/2	R1	G1/2	19	14	27	34	131

Raccord Mod. 2531

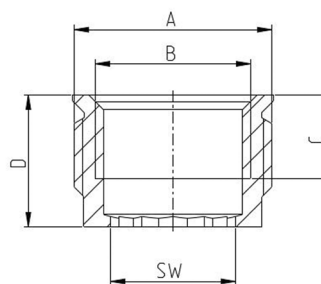
Réduction Cylindrique
côté femelle < côté mâle



DIMENSIONS							
Mod.	A	B	H	L	SW	Poids (g)	
2531 1/8-M5	G1/8	M5	6	10,5	13	8	*
2531 1/4-1/8	G1/4	G1/8	8	13	17	11	*
2531 3/8-1/8	G3/8	G1/8	9	14	19	17	
2531 3/8-1/4	G3/8	G1/4	9	14	19	12	*
2531 1/2-1/8	G1/2	G1/8	10	15,5	24	32	
2531 1/2-1/4	G1/2	G1/4	10	15,5	24	29	
2531 1/2-3/8	G1/2	G3/8	10	15,5	24	22	*

* = Modèle taraudé sur toute sa longueur

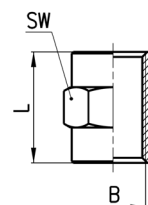
Raccord Mod. 2561



Mod.	A	B	C	D	SW
2561 1/4-1/8	G1/4	G1/8	7	9	6
2561 3/8-1/4	G3/8	G1/4	7	9	8
2561 1/2-3/8	G1/2	G3/8	9	11	10
2561 3/4-1/2	G3/4	G1/2	11	13	12
2561 1-3/4	G1	G3/4	12,5	15	17

Raccord Mod. 2543

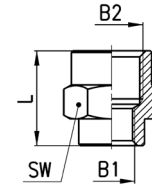
Manchon Egal



DIMENSIONS				
Mod.	B	L	SW	Poids (g)
2543 M5	M5	11	8	3
2543 1/8	G1/8	15	13	8
2543 1/4	G1/4	22	17	19
2543 3/8	G3/8	23	20	19
2543 1/2	G1/2	28	24	29

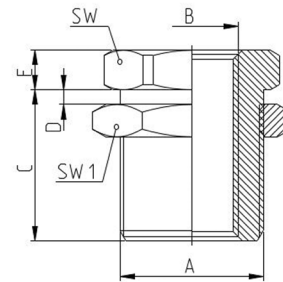
Raccordi Mod. 2553

Manchon Inégal



DIMENSIONS					
Mod.	B1	B2	L	SW	Poids (g)
2553 M5-1/8	M5	G1/8	13,5	13	7
2553 1/8-1/4	G1/8	G1/4	17	17	18
2553 1/8-3/8	G1/8	G3/8	18	20	18
2553 1/8-1/2	G1/8	G1/2	21,5	24	28
2553 1/4-3/8	G1/4	G3/8	21,5	20	21
2553 1/4-1/2	G1/4	G1/2	23	24	32
2553 3/8-1/2	G3/8	G1/2	24	24	31

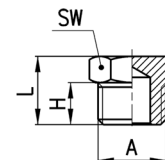
Raccordi Mod. 2593



Mod.	A	B	C	D	E	SW	SW1
2593 M5-M10x1	M10x1	M5	10,5	7	3,5	14	14
2593 1/8-M16x1	M16x1,5	G1/8	14	10	4	19	22
2593 1/4-M20x1,5	M20x1,5	G1/4	21	16	4	24	27
2593 3/8-M26x1,5	M26x1,5	G3/8	21	15	5	30	32
2593 1/2-M28x1,5	M28x1,5	G1/2	27	21	6	32	36

Raccord Mod. 2611

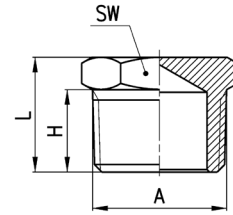
Bouchon Mâle Cylindrique



DIMENSIONS					
Mod.	A	H	L	SW	Poids (g)
2611 M5	M5	4	7,5	8	2
2611 1/8	G1/8	6	10,5	13	7
2611 1/4	G1/4	8	13	17	13
2611 3/8	G3/8	9	14	19	18
2611 1/2	G1/2	10	15,5	24	31
2611 1	G1	13	19	38	76

Raccord Mod. 2610 3/4

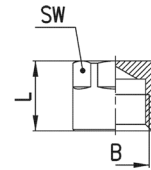
Bouchon Mâle Conique



DIMENSIONS					
Mod.	A	H	L	SW	Poids (g)
2610 3/4	R3/4	16,5	23	27	61

Raccord Mod. 2613

Bouchon Femelle cylindrique

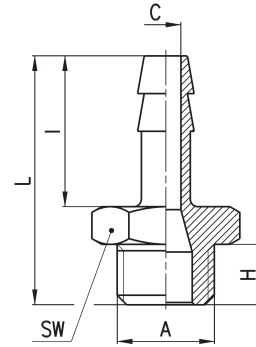


DIMENSIONS				
Mod.	B	L	SW	Poids (g)
2613 1/8	G1/8	11	12	6
2613 1/4	G1/4	13,5	15	13
2613 3/8	G3/8	15,5	18	19
2613 1/2	G1/2	22,5	19	33

Raccord Mod. 2601



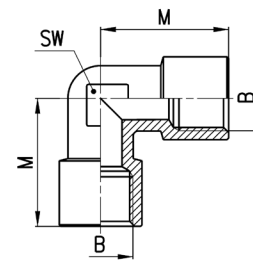
Embout Cannelé Mâle
Métrique-Cylindrique



DIMENSIONS								
Mod.	N	A	C	H	I	L	SW	Poids (g)
2601 2-M5	2	M5	1,2	4	8	16	8	2
2601 4,5-M5	4	M5	2,5	4	15	23	8	3
2601 7-1/8	7	G1/8	4	6	20	30	12	9
2601 7-1/4	7	G1/4	4	8	20	33	17	16
2601 8-1/8	8	G1/8	5	6	20	30	12	10
2601 9-1/8	9	G1/8	5,5	6	20	30	12	11
2601 9-1/4	9	G1/4	6	8	20	33	17	17
2601 9-3/8	9	G3/8	6	9	20	34	19	21
2601 12-1/4	12	G1/4	8,5	8	20	33	17	20
2601 12-3/8	12	G3/8	9	9	20	34	19	23
2601 12-1/2	12	G1/2	9	10	20	35,5	24	34
2601 17-3/8	17	G3/8	12	9	24	38	19	31
2601 17-1/2	17	G1/2	13	10	24	39,5	24	41

Raccord Mod. 2013

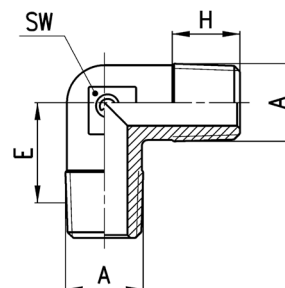
Coude Femelle Egal



DIMENSIONS				
Mod.	B	M	SW	Poids (g)
2013 1/8	G1/8	19	11	16
2013 1/4	G1/4	23	14	28
2013 3/8	G3/8	25	16	39
2013 1/2	G1/2	31,5	20	69

Raccord Mod. 2010

Coude Mâle Egal Conique

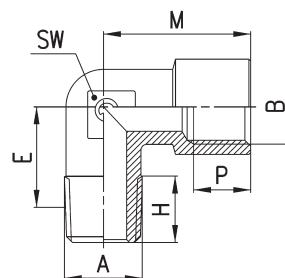


DIMENSIONS					
Mod.	A	E	H	SW	Poids (g)
2010 1/8	R1/8	11,5	7,5	9	10
2010 1/4	R1/4	13,5	11	12	18
2010 3/8	R3/8	15,5	11,5	14	28
2010 1/2	R1/2	16	14	16	47
2010 3/4	R3/4	19	16	25	103
2010 1	R1	23	17	30	183

Raccord Mod. 2021 et 2020

Mod. 2021: Coude Mâle/Femelle Egal Métrique

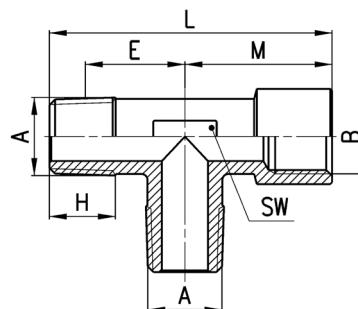
Mod. 2020: Coude Mâle/Femelle Egal Conique



DIMENSIONS								
Mod.	A	B	E	H	M	P (min)	SW	Poids (g)
2021 M5-M5	M5	M5	9	4	10,5	4,5	9	7
2020 1/8-1/8	R1/8	G1/8	11,5	8,5	19	6	11	17
2020 1/4-1/4	R1/4	G1/4	15	11	23	7	13	27
2020 3/8-3/8	R3/8	G3/8	15	11,5	25	8	15	33
2020 1/2-1/2	R1/2	G1/2	17,5	14	31,5	9,5	20	63
2020 3/4-3/4	R3/4	G3/4	19	16	36,5	16,5	25	126
2020 1-1	R1	G1	23	17	45	19	30	209

Raccord Mod. 2050

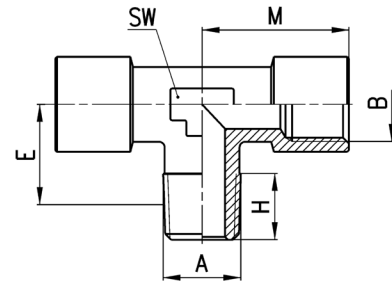
Té M/M/F Egal Conique



DIMENSIONS								
Mod.	A	B	E	H	L	M	SW	Poids (g)
2050 1/8-1/8	R1/8	G1/8	11,5	8,5	37	19	12	27
2050 1/4-1/4	R1/4	G1/4	15	11	46	23	13	35
2050 3/8-3/8	R3/8	G3/8	15	11,5	48,5	25	16	44
2050 1/2-1/2	R1/2	G1/2	17,5	14	60,5	31,5	20	83

Raccord Mod. 2060

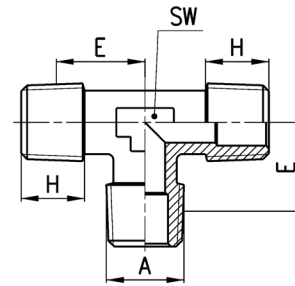
Té Mâle au Centre Egal Conique



DIMENSIONS							
Mod.	A	B	E	H	M	SW	Poids (g)
2060 1/8-1/8	R1/8	G1/8	11,5	8,5	19	12	22
2060 1/4-1/4	R1/4	G1/4	15	11	23	13	38
2060 3/8-3/8	R3/8	G3/8	15	11,5	25	16	49
2060 1/2-1/2	R1/2	G1/2	17,5	14	31,5	20	89

Raccord Mod. 2080

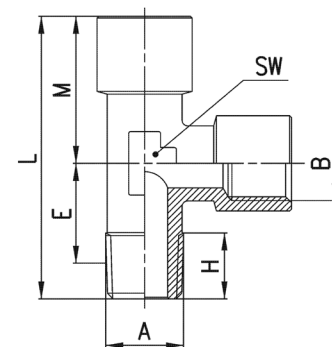
Té Mâle Egal Conique



DIMENSIONS					
Mod.	A	E	H	SW	Poids (g)
2080 1/8	R1/8	11,5	7,5	9	14
2080 1/4	R1/4	13,5	11	12	25
2080 3/8	R3/8	15,5	11,5	14	39
2080 1/2	R1/2	16	14	16	82
2080 3/4	R3/4	19	16,2	25	135
2080 1	R1	23	17,5	30	239

Raccord Mod. 2070

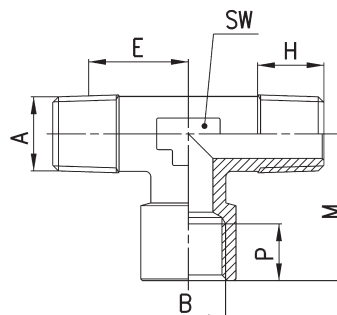
Té M/F/F Egal Conique



DIMENSIONS								
Mod.	A	B	E	H	L	M	SW	Poids (g)
2070 1/8-1/8	R1/8	G1/8	11,5	8,5	37	19	12	22
2070 1/4-1/4	R1/4	G1/4	15	11	46	23	13	37
2070 3/8-3/8	R3/8	G3/8	15	11,5	48,5	25	16	49
2070 1/2-1/2	R1/2	G1/2	17,5	14	60,5	31,5	20	89

Raccord Mod. 2090

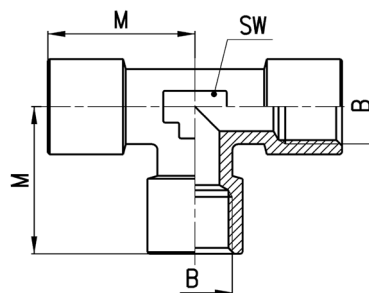
Té M/F/M Egal Conique



DIMENSIONS								
Mod.	A	B	E	H	M	P	SW	Poids (g)
2090 1/8-1/8	R1/8	G1/8	11,5	8,5	19	6	12	22
2090 1/4-1/4	R1/4	G1/4	15	11	23	7	13	37
2090 3/8-3/8	R3/8	G3/8	15	11,5	25	8	16	44
2090 1/2-1/2	R1/2	G1/2	17,5	14	31,5	9,5	20	83
2090 3/4-3/4	R3/4	G3/4	19	16	36,5	16,5	25	156
2090 1-1	R1	G1	23	17,5	45	19	30	262

Raccord Mod. 2003

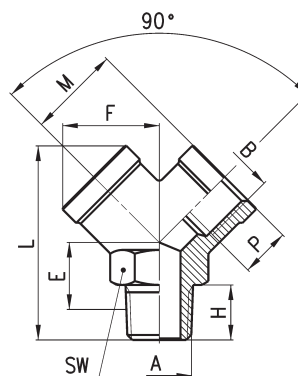
Té Femelle Egal cylindrique



DIMENSIONS				
Mod.	B	M	SW	Poids (g)
2003 1/8	G1/8	19	12	23
2003 1/4	G1/4	23	13	39
2003 3/8	G3/8	25	16	54
2003 1/2	G1/2	31,5	20	97

Raccord Mod. 2040

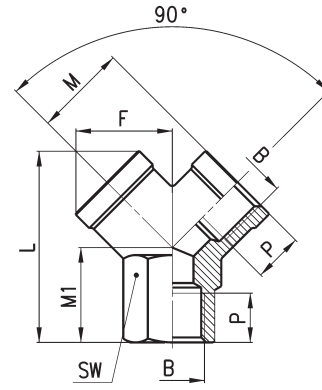
Y Mâle au Centre Egal Conique



DIMENSIONS										
Mod.	A	B	E	F	H	L	M	P	SW	Poids (g)
2040 1/8-1/8	R1/8	G1/8	9,5	14,5	8	32	14	8	13	22
2040 1/4-1/4	R1/4	G1/4	12	18	11	38	17,5	11	17	38
2040 3/8-3/8	R3/8	G3/8	13,5	20,5	11,5	42,5	19	11,5	20	52
2040 1/2-1/2	R1/2	G1/2	15,5	26,5	14	53	24,5	14	25	110

Raccord Mod. 2043

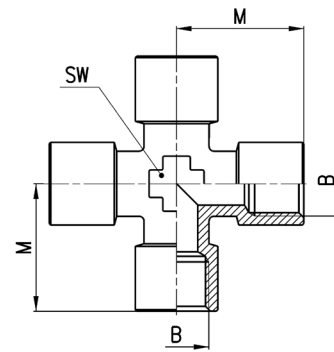
Y Femelle Egal Conique



DIMENSIONS									
Mod.	B	F	L	M	M1	P	SW	Poids (g)	
2043 1/8	G1/8	14,5	26,5	14	12	8	13	18	
2043 1/4	G1/4	18	32	17,5	14	11	17	32	
2043 3/8	G3/8	20,5	37	19	16	11,5	20	44	
2043 1/2	G1/2	26,5	45	24,5	19	14	25	84	

Raccord Mod. 2033

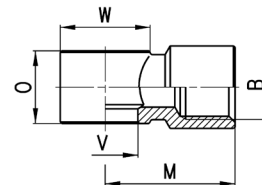
Croix Femelle



DIMENSIONS				
Mod.	B	M	SW	Poids (g)
2033 1/8	G1/8	19	12	27
2033 1/4	G1/4	23	14	51
2033 3/8	G3/8	25	16	70

Raccord Mod. 2023

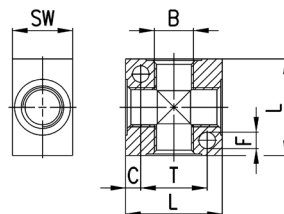
Banjo Simple Femelle cylindrique



DIMENSIONS							
Mod.	B	M	O	V	W	Poids (g)	assemblage avec Mod.
2023 M5-M5	M5	10,5	9	5,1	9	6	1631
2023 M5-M6	M5	10,5	9	5,1	9	6	SCU, SVU, SCO...
2023 1/8-1/8	G1/8	20	14,5	9,8	Ø14	14	1631, 1635, SCU, SVU, SCO...
2023 1/4-1/4	G1/4	23,5	14,5	13,2	Ø18	21	1635, SCU, SVU, SCO...
2023 3/8-3/8	G3/8	26,5	14,5	16,7	Ø21	27	1635, SCU, SVU, SCO...

Collecteur Mod.3033

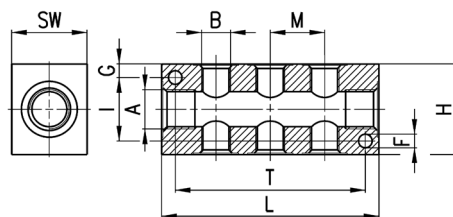
Nourrice Egale 4 Orifices
Matériau: AL anodisé



DIMENSIONS							
Mod.	B	C	F	L	T	SW	Poids (g)
3033 1/8	G1/8	4	4,5	25	17	16	18
3033 1/4	G1/4	5	5,5	32	22	20	35
3033 3/8	G3/8	7	5,5	40	26	25	73
3033 1/2	G1/2	8	5,5	50	34	30	137

Collecteur Mod. 3043

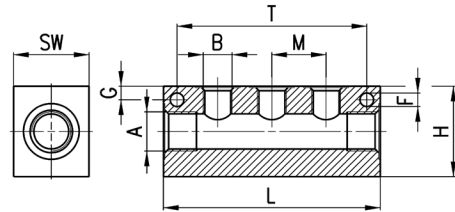
Nourrice Sorties Latérales Doubles
Matériau: AL anodisé



DIMENSIONS												
Mod.	A	SORTIES LATÉRALES DOUBLES	B	F	G	H	I	L	M	T	SW	Poids (g)
3043 1/4-3D-1/8	G1/4	3	G1/8	4,5	4,5	30	21	72	18	63	20	85
3043 1/4-4D-1/8	G1/4	4	G1/8	4,5	4,5	30	21	90	18	81	20	107
3043 1/4-5D-1/8	G1/4	5	G1/8	4,5	4,5	30	21	108	18	99	20	128
3043 1/4-6D-1/8	G1/4	6	G1/8	4,5	4,5	30	21	126	18	117	20	151
3043 3/8-3D-1/4	G3/8	3	G1/4	5,5	6	40	28	92	24	75	25	177
3043 3/8-4D-1/4	G3/8	4	G1/4	5,5	6	40	28	116	24	99	25	224
3043 3/8-5D-1/4	G3/8	5	G1/4	5,5	6	40	28	140	24	123	25	270
3043 3/8-6D-1/4	G3/8	6	G1/4	5,5	6	40	28	164	24	147	25	315
3043 1/2-3D-3/8	G1/2	3	G3/8	5,5	6,5	50	37	104	26	85	30	287
3043 1/2-4D-3/8	G1/2	4	G3/8	5,5	6,5	50	37	130	26	111	30	356
3043 1/2-5D-3/8	G1/2	5	G3/8	5,5	6,5	50	37	156	26	137	30	427
3043 1/2-6D-3/8	G1/2	6	G3/8	5,5	6,5	50	37	182	26	163	30	495

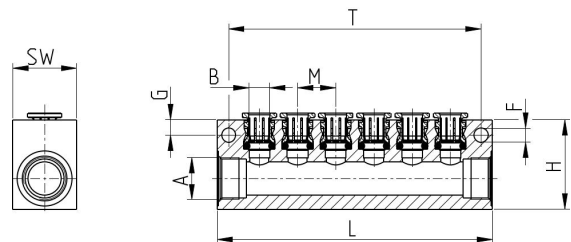
Collecteur Mod. 3053

Nourrice Sorties Latérales Simples
Matériau: AL anodisé



DIMENSIONS											
Mod.	A	Simple Sorties	B	F	G	H	L	M	T	SW	Poids (g)
3053 1/4-3L-1/8	G1/4	3	G1/8	4,5	4,5	30	72	18	63	20	92
3053 1/4-4L-1/8	G1/4	4	G1/8	4,5	4,5	30	90	18	81	20	116
3053 1/4-5L-1/8	G1/4	5	G1/8	4,5	4,5	30	108	18	99	20	140
3053 1/4-6L-1/8	G1/4	6	G1/8	4,5	4,5	30	126	18	117	20	164
3053 3/8-3L-1/4	G3/8	3	G1/4	5,5	6	40	92	24	75	25	191
3053 3/8-4L-1/4	G3/8	4	G1/4	5,5	6	40	116	24	99	25	243
3053 3/8-5L-1/4	G3/8	5	G1/4	5,5	6	40	140	24	123	25	294
3053 3/8-6L-1/4	G3/8	6	G1/4	5,5	6	40	164	24	147	25	345
3053 1/2-3L-3/8	G1/2	3	G3/8	5,5	6,5	50	104	26	85	30	313
3053 1/2-4L-3/8	G1/2	4	G3/8	5,5	6,5	50	130	26	111	30	395
3053 1/2-5L-3/8	G1/2	5	G3/8	5,5	6,5	50	156	26	137	30	474
3053 1/2-6L-3/8	G1/2	6	G3/8	5,5	6,5	50	182	26	163	30	551

Raccord Mod. 3053



Mod.	A	B	L	G	M	T	H	F	SW	Poid (g)	
3053 1/4-8L-4	G1/4	8	4	97	4,5	10	88	30	4,5	20	140
3053 1/4-8L-6	G1/4	8	6	120	4,5	13	111	30	4,5	20	172
3053 3/8-6L-8	G3/8	6	8	108	6	15	99	35	5,5	25	210
3053 1/2-6L-10	G1/2	6	10	127	6,5	17	118	45	5,5	30	365