

# GRIPFIT PUSH-IN FITTINGS

## SERIES 7000 - BEVERAGE AND WATER FILTRATION

Tube external diameters: 4, 6, 8 mm  
Fittings threads: ISO-228 BSPP (G1/8, G1/4, G3/8).



- Bio-sourced materials (composite)
- Low Lead Brass (CW510L)
- Easy connection and disconnection

Series 7000 Beverage and Water filtration is a new range of push-in fittings made of reinforced bio-sourced technopolymer and low lead brass. Thanks to the materials and new connection technology, these fittings are ideal for beverage dispensing and water filtration systems.



RoHS



Reach



21 CFR compliance



ISO 14743:2020



DM174 Drinking Water



Regulation (CE) n. 1935/2004 n. 2023/2006



NSF169\*\* \*\*



NSF61\*\*



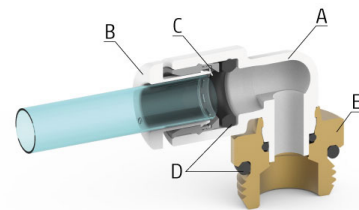
Regulation (CE) n. 2023/2006

\*Check the NSF certified models here: <https://www.nsf.org/certified-products-systems>

\*\* NSF169 and NSF61 currently available for brass straight fittings.

### GENERAL DATA

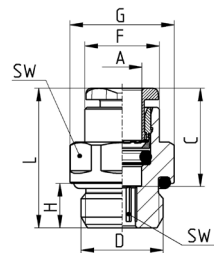
Diameters	Ø4 mm	Ø6 mm	Ø8 mm
Maximum working pressure	-20° / +40°	16 bar	16 bar
	+40° / +70°	16 bar	14 bar
	+70° / +100°	16 bar	12 bar
Minimum working pressure	-0,9 bar		
Temperature	-20 ÷ +100 (see characteristics of tubes used) (NSF 61 requirement up to 82°C)		
Storage temperature	-10° ÷ +60°		
Threads	GAS cylindrical ISO-228 BSPP		
Connecting tube	Polyurethane (PU), Polyethylene (PE), Polyamide (PA), Fluoropolymer (PTFE), Polyester (HY3L), rigid metal pipe with smooth grooved metal end		
Fluid	Drinking and mains water, beverages and gas (for other fluids consult our technicians)		
Materials	(A) Body = Technopolymer (PA11), low lead brass (CW510L)		
	(B) Button = Technopolymer (PA66)		
	(C) Gripping ring = Stainless steel (AISI 301)		
	(D) Seals = EPDM		
	(E) Thread = Low lead brass (CW510L)		



## GRIPFIT PUSH-IN FITTINGS

## SERIES 7000 - BEVERAGE AND WATER FILTRATION - DIMENSIONAL CHARACTERISTICS

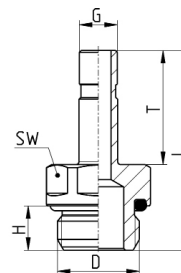
**Male straight connector Mod. B6512**

 Low lead brass (CW510L)  
 Thread BSPP ISO-228


Mod.	A	D	C	F	G	H	L	SW	SW1	Weight [g]
B6512 4-1/8	4	G1/8	14,6	8,8	13,5	6	20	12	2,5	8
B6512 4-1/4	4	G1/4	14,6	8,8	16,4	7	21,5	15	2,5	12
B6512 6-1/8	6	G1/8	15,5	11,7	13,5	6	21	12	4	8
B6512 6-1/4	6	G1/4	15,5	11,7	16,4	7	22	15	4	11
B6512 8-1/8	8	G1/8	17,3	13,7	15,2	6	26	14	5	12
B6512 8-1/4	8	G1/4	17,3	13,7	16,4	7	24,5	15	6	14
B6512 8-3/8	8	G3/8	17,3	13,7	20,5	7	24	19	7	24

**Male straight adaptor Mod. B6812**

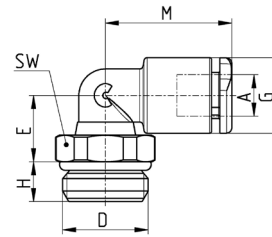

Low lead brass (CW510L) Thread BSPP ISO-228



Mod.	D	G	H	L	T	SW	Weight [g]
B6812 4-1/8	G1/8	4	6	29	16,5	12	9
B6812 4-1/4	G1/4	4	7	30	16,5	15	14
B6812 6-1/8	G1/8	6	6	30,5	18	12	10
B6812 6-1/4	G1/4	6	7	31,5	18	15	14,5
B6812 8-1/8	G1/8	8	6	33	20,5	12	12
B6812 8-1/4	G1/4	8	7	34	20,5	15	16,5
B6812 8-3/8	G1/8	8	7	36	20,5	19	26

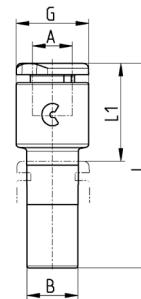
## Swivel male elbow Mod. B7522

Thread BSPP ISO-228



Mod.	A	D	E	G	H	M	SW	Weight [g]
B7522 4-1/8	4	G1/8	9	9,2	5	17	12	7
B7522 4-1/4	4	G1/4	9	9,2	6	17	14	10
B7522 6-1/8	6	G1/8	10	11,4	5	19	12	8
B7522 6-1/4	6	G1/4	10	11,4	6	19	14	11
B7522 8-1/8	8	G1/8	13,5	13,7	5	21,5	12	11
B7522 8-1/4	8	G1/4	12	13,7	6	21,5	14	14
B7522 8-3/8	8	G3/8	12	13,7	7	21,5	19	19

## Reducer junction straight Mod. B7800

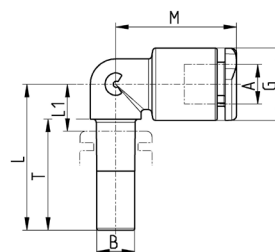


Mod.	A	B	G	L	L1	Weight [g]
B7800 4-6	4	6	9,3	29,5	14	2
B7800 4-8	4	8	9,3	30,5	14	3
B7800 6-8	6	8	11,4	32,5	15,5	4

GRIPFIT PUSH-IN FITTINGS

**SERIES 7000 - BEVERAGE AND WATER FILTRATION - DIMENSIONAL CHARACTERISTICS**

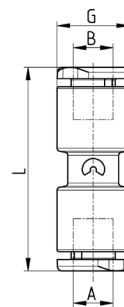
**Equal junction elbow Mod. B7555**



Mod.	A	B	G	L	L1	M	T	Weight [g]
<b>B7555 4-4</b>	4	4	9,2	21	7	17	16,5	2
<b>B7555 6-6</b>	6	6	11,4	23	8	19	17,5	4
<b>B7555 8-8</b>	8	8	13,7	25	9	21,5	18,5	5

FITTINGS, CONNECTORS AND TUBES

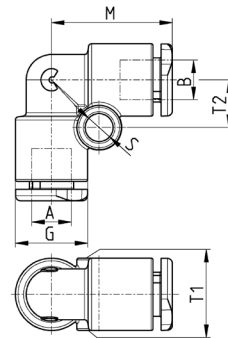
**Equal intermediate straight Mod. B7580**



Mod.	A	B	G	L	Weight [g]
<b>B7580 4</b>	4	4	9,2	29,2	4
<b>B7580 6</b>	6	6	11,4	32	6
<b>B7580 8</b>	8	8	13,7	35,4	8

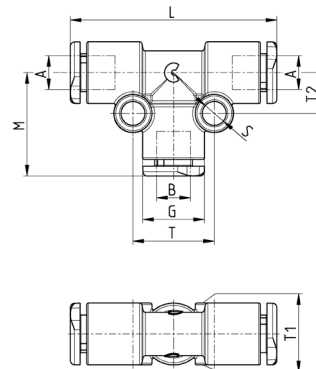
10

## Equal intermediate elbow Mod. B7550



Mod.	A	B	G	M	S	T1	T2	Weight [g]
<b>B7550 4</b>	4	4	9,2	17	4	9,2	6,5	4
<b>B7550 6</b>	6	6	11,4	19	4	11,4	7,5	6
<b>B7550 8</b>	8	8	13,7	21,5	4	13,7	8,5	9

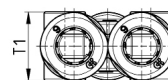
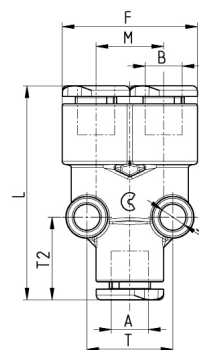
## Equal intermediate tee Mod. B7540



Mod.	A	B	G	L	M	S	T	T1	T2	Weight [g]
<b>B7540 4</b>	4	4	9,2	34	17	4	12	9,2	6,5	6
<b>B7540 6</b>	6	6	11,4	38	19	4	15	11,4	7,5	9
<b>B7540 8</b>	8	8	13,7	43	21,5	4	17	13,7	8,5	14

## GRIPFIT PUSH-IN FITTINGS

## SERIES 7000 - BEVERAGE AND WATER FILTRATION - DIMENSIONAL CHARACTERISTICS

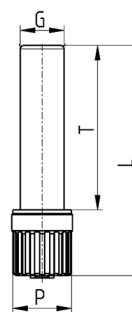
**Equal intermediate Y Mod. B7560**


Mod.	A	B	F	L	M	S	T	T1	T2	Weight [g]
<b>B7560 4</b>	4	4	18,2	33,2	9	4	10,8	9,5	13	6
<b>B7560 6</b>	6	6	23	36	11,4	4	14,5	11,5	14	9
<b>B7560 8</b>	8	8	27,2	41,5	13,5	4	17	14	15	15

FITTINGS, CONNECTORS AND TUBES

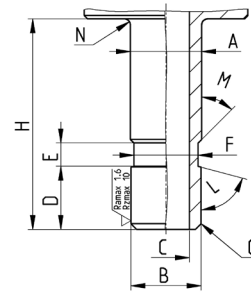
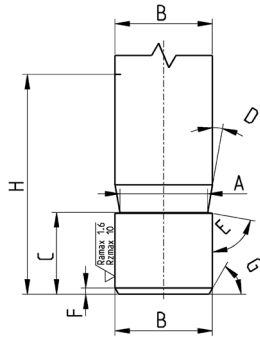
**Plastic male plug Mod. B6900**

10



Mod.	G	L	P	T	Weight [g]
<b>B6900 4</b>	4	29	8	20	1
<b>B6900 6</b>	6	31,5	8	22,5	1
<b>B6900 8</b>	8	34,5	12	24,5	2

### Groove for metal pipe



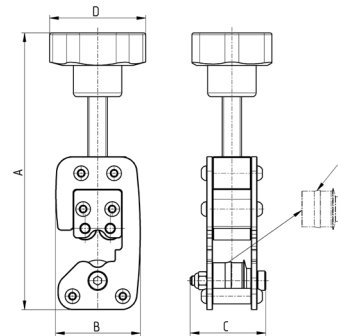
Made by Camozzi grooving tool 8TRT (or machining)

A	B	C	D	E	F	G	H
3,4	4	5,3	10°	80°	0,5	30°	16,5
5,2	6	6,25	10°	80°	0,5	30°	18
7,2	8	6,4	10°	80°	0,5	30°	20

Made by machining

A	B	C	D	E	F	G	H	L	M	N
4,1	4	2	5,3	2	3,5	0,5x45°	16,5	75°	45°	0,5
6,1	6	4	5,4	2	5,5	0,5x45°	18	75°	45°	0,5
8,1	8	6	6	2	7,5	0,5x45°	20,5	75°	45°	0,5

### Grooving tool for metallic tubes

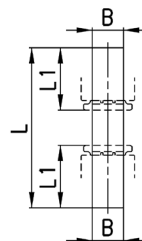


Mod.	Tube Ø	A (max)	B	C	D	Weight [g]	E (spare wheel)
8TRT 4	4	138	43,5	39	50	450	RTRT 4
8TRT 6	6	140	43,5	39	50	450	RTRT 6
8TRT 8	8	143	43,5	39	50	450	RTRT 8

GRIPFIT PUSH-IN FITTINGS

SERIES 7000 - BEVERAGE AND WATER FILTRATION - ACCESSORIES

Plastic junction Mod. 7950



Mod.	B	L	L1	Weight [g]
7950 4	4	37	14	1
7950 6	6	39	15	1
7950 8	8	41	16	1
7950 10	10	44	18,5	1
7950 12	12	49	19	1