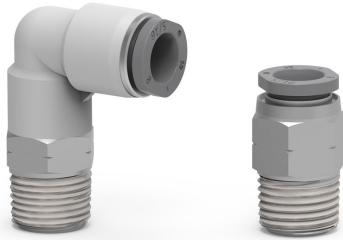


GRIPFIT PUSH-IN FITTINGS

SERIES 7000 - INCH

New



- Easy to connect and disconnect
- Optimum sealing
- Long life cycle
- High flow capacity
- Limited marking on tubing

GRIPfit inch is the latest generation of push-in fittings developed to cover and satisfy the needs of industrial automation.

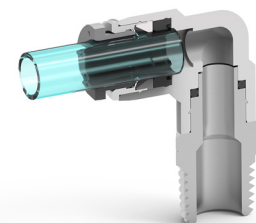
Made with high-performance materials, this new range of fittings is equipped with a flexible stainless steel gripping ring to facilitate the connection and disconnection of most semi-rigid tubes, limiting the effects of tube marking and guaranteeing a robust and reliable tightening on the whole surface of the tube.

GRIPfit inch is ideal for vacuum and low pressures both in static and dynamic applications, thanks to shaped sealing technology. The materials used comply with the main standards and directives and have been designed to meet and adapt perfectly to the specific application requirements of each sector.

Reliable connection, compact dimensions and easy installation in confined spaces are only some of the features that make this new range of fittings an innovative solution for many applications.

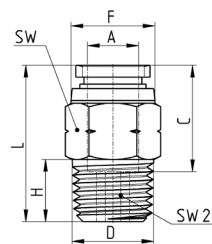
GENERAL DATA

Applicable fluid	Compressed air
Operating pressure	29.5" Hg vacuum up to 150 psi
Operating temperature	32°F to 140°F
Hose materials used	Nylon 11 or 12 Polyurethane 85 or 95 durometer
Material	Body: PBT Seals: NBR (silicone free) Threaded bodies: nickel plated brass Push button and backing ring: POM Gripping: stainless steel Collar: zinc
Tube sizes	Standard sizes: 5/32", 1/4", 5/16", 3/8" and 1/2"
Thread sizes	Standard sizes: 10-32 UNF, 1/8", 1/4", 3/8", 1/2" NPTF



GRIPFIT PUSH-IN FITTINGS
SERIES 7000 - INCH - DIMENSIONAL CHARACTERISTICS
Male straight fitting Mod. T6510

New

 Nickel-plated brass
 Thread NPTF (pre-applied sealant)


Mod.	A OD	D NPTF	C	F	L	H	SW	SW2	Weight (lb)	Weight (g)	
T6512 53-32	5/32	10-32 UNF	0,583	0,413	0,886	0,142	0,438	0,094	0,013	5,8	●
T6510 53-02	5/32	1/8	0,583	0,413	0,768	0,335	0,438	0,125	0,017	7,8	-
T6510 53-04	5/32	1/4	0,583	0,413	0,866	0,413	0,563	0,125	0,033	14,8	-
T6512 04-32	1/4	10-32 UNF	0,661	0,512	0,945	0,142	0,512	0,094	0,019	8,8	●
T6510 04-02	1/4	1/8	0,661	0,512	0,945	0,335	0,512	0,188	0,019	8,8	-
T6510 04-04	1/4	1/4	0,661	0,512	0,921	0,413	0,563	0,188	0,028	12,8	-
T6510 04-06	1/4	3/8	0,661	0,512	0,961	0,453	0,688	0,188	0,052	23,8	-
T6510 05-02	5/16	1/8	0,724	0,551	1,13	0,335	0,563	0,188	0,028	12,7	-
T6510 05-04	5/16	1/4	0,724	0,551	1,043	0,413	0,563	0,25	0,032	14,7	-
T6510 05-06	5/16	3/8	0,724	0,551	0,965	0,453	0,688	0,25	0,048	21,7	-
T6510 05-08	5/16	1/2	0,724	0,551	1,083	0,571	0,875	0,25	0,132	59,7	-
T6510 06-02	3/8	1/8	0,791	0,657	1,181	0,335	0,688	0,188	0,047	21,4	-
T6510 06-04	3/8	1/4	0,791	0,657	1,22	0,413	0,688	0,25	0,056	25,4	-
T6510 06-06	3/8	3/8	0,791	0,657	1,091	0,453	0,688	0,313	0,045	20,4	-
T6510 06-08	3/8	1/2	0,791	0,657	1,11	0,571	0,875	0,313	0,111	50,4	-
T6510 08-02	1/2	1/8	0,909	0,819	1,315	0,335	0,875	0,188	0,071	32,1	-
T6510 08-04	1/2	1/4	0,909	0,819	1,394	0,413	0,875	0,25	0,077	35,1	-
T6510 08-06	1/2	3/8	0,909	0,819	1,256	0,453	0,875	0,375	0,08	36,1	-
T6510 08-08	1/2	1/2	0,909	0,819	1,236	0,571	0,875	0,375	0,102	46,1	-

 - = with pre-applied sealant
 ● = with O-Ring

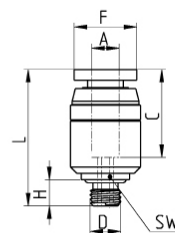
FITTINGS, CONNECTORS AND TUBES

10

Male straight fitting Mod. T6512

New

Nickel-plated brass



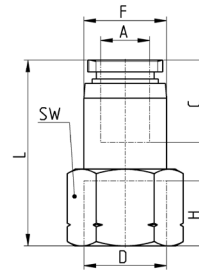
Mod.	A OD	D	C	F	H	L	SW	Weight (lb)	Weight (g)	
T6512 53-32-M	5/32	10-32 UNF	0,583	0,413	0,142	0,843	3/32	0,013	5,8	●
T6512 04-32-M	1/4	10-32 UNF	0,661	0,512	0,142	0,953	3/32	0,019	8,8	●

● = with O-Ring

Female straight fitting Mod. T6463

New

Nickel-plated brass
Thread NPTF

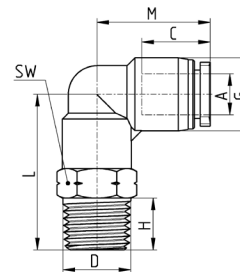


Mod.	A OD	D NPTF	C	F	H	L	SW	Weight (lb)	Weight (g)
T6463 53-02	5/32	1/8	0,583	0,413	0,374	1,067	9/16	0,035	15,8
T6463 53-04	5/32	1/4	0,583	0,413	0,453	1,165	11/16	0,044	19,8
T6463 04-02	1/4	1/8	0,661	0,512	0,374	1,134	9/16	0,041	18,8
T6463 04-04	1/4	1/4	0,661	0,512	0,453	1,213	11/16	0,052	23,8
T6463 05-02	5/16	1/8	0,724	0,551	0,374	1,161	9/16	0,041	18,7
T6463 05-04	5/16	1/4	0,724	0,551	0,453	1,26	11/16	0,057	25,7
T6463 06-04	3/8	1/4	0,791	0,657	0,453	1,303	11/16	0,058	26,4
T6463 06-06	3/8	3/8	0,791	0,657	0,492	1,343	7/8	0,087	39,4
T6463 08-04	1/2	1/4	0,909	0,819	0,453	1,476	7/8	0,117	53,1
T6463 08-06	1/2	3/8	0,909	0,819	0,492	1,476	7/8	0,099	45,1

Male elbow fitting Mod. T7520 - T7522

New

Nickel-plated brass
Thread NPTF (pre-applied sealant)

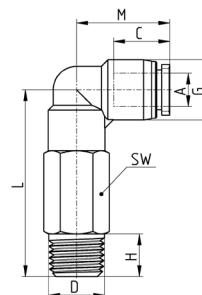


Mod.	A OD	D NPTF	C	G	H	L	M	SW	Weight (lb)	Weight (g)	
T7522 53-32	5/32	10-32 UNF	0,583	0,413	0,142	0,843	0,728	7/16	0,017	7,8	●
T7520 53-02	5/32	1/8	0,583	0,413	0,335	0,984	0,728	7/16	0,022	9,8	-
T7520 53-04	5/32	1/4	0,583	0,413	0,413	1,102	0,728	9/16	0,037	16,8	-
T7522 04-32	1/4	10-32 UNF	0,661	0,512	0,142	1,02	0,807	1/2	0,026	11,7	●
T7520 04-02	1/4	1/8	0,661	0,512	0,335	1,094	0,807	1/2	0,032	14,7	-
T7520 04-04	1/4	1/4	0,661	0,512	0,413	1,201	0,807	9/16	0,043	19,7	-
T7520 04-06	1/4	3/8	0,661	0,512	0,453	1,24	0,807	11/16	0,072	32,7	-
T7520 04-08	1/4	1/2	0,661	0,512	0,571	1,398	0,807	7/8	0,123	55,7	-
T7520 05-02	5/16	1/4	0,724	0,583	0,335	1,161	0,906	9/16	0,039	17,7	-
T7520 05-04	5/16	1/4	0,724	0,583	0,413	1,24	0,906	9/16	0,05	22,7	-
T7520 05-06	5/16	3/8	0,724	0,583	0,453	1,28	0,906	11/16	0,079	35,7	-
T7520 05-08	5/16	1/2	0,724	0,583	0,571	1,398	0,906	7/8	0,123	55,7	-
T7520 06-02	3/8	1/8	0,791	0,689	0,335	1,181	0,969	11/16	0,053	24,2	-
T7520 06-04	3/8	1/4	0,791	0,689	0,413	1,26	0,969	11/16	0,062	28,2	-
T7520 06-06	3/8	3/8	0,791	0,689	0,453	1,299	0,969	11/16	0,073	33,2	-
T7520 06-08	3/8	1/2	0,791	0,689	0,571	1,417	0,969	7/8	0,117	53,2	-
T7520 08-04	1/2	1/4	0,909	0,827	0,413	1,398	1,114	3/4	0,079	36	-
T7520 08-06	1/2	3/8	0,909	0,827	0,453	1,437	1,114	3/4	0,099	45	-
T7520 08-08	1/2	1/2	0,909	0,827	0,571	1,555	1,114	7/8	0,139	63	-

- = with pre-applied sealant
● = with O-Ring

Extended male elbow fitting Mod. T7527

New

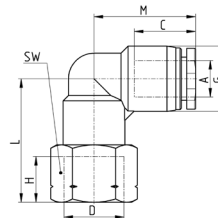
 Nickel-plated brass
 Thread NPTF (pre-applied sealant)


Mod.	A OD	D NPTF	C	G	H	L	M	SW	Weight (lb)	Weight (g)
T7527 53-02	5/32	1/8	0,583	0,413	0,335	1,417	0,728	7/16	0,039	17,8
T7527 53-04	5/32	1/4	0,583	0,413	0,413	1,476	0,728	9/16	0,07	31,8
T7527 04-02	1/4	1/8	0,661	0,512	0,335	1,614	0,807	1/2	0,063	28,7
T7527 04-04	1/4	1/4	0,661	0,512	0,413	1,732	0,807	9/16	0,077	34,7
T7527 06-02	3/8	1/8	0,791	0,689	0,335	0,038	0,969	11/16	0,134	60,9
T7527 06-04	3/8	1/4	0,791	0,689	0,413	1,969	0,969	11/16	0,142	64,2
T7527 06-06	3/8	3/8	0,791	0,689	0,453	2,008	0,969	11/16	0,153	69,2

Female elbow fitting Mod. T7523

New

Thread NPTF

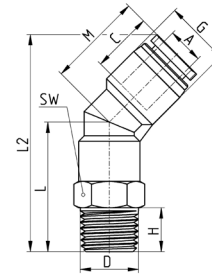


Mod.	A OD	D NPTF	C	G	H	L	M	SW	Weight (lb)	Weight (g)
T7523 53-02	5/32	1/8	0,583	0,413	0,374	0,886	0,728	9/16	0,035	15,8
T7523 04-02	1/4	1/8	0,661	0,512	0,374	0,984	0,807	9/16	0,046	20,7
T7523 04-04	1/4	1/4	0,661	0,512	0,433	1,083	0,807	11/16	0,05	22,7
T7523 06-04	3/8	1/4	0,791	0,689	0,433	1,122	0,969	11/16	0,071	32,2
T7523 06-06	3/8	3/8	0,791	0,689	0,472	1,161	0,969	7/8	0,08	36,2
T7523 08-06	1/2	3/8	0,909	0,827	0,472	1,299	1,114	7/8	0,126	57
T7523 08-08	1/2	1/2	0,909	0,827	0,571	1,378	1,114	15/16	0,165	75

Male 135* fitting Mod. T7110 - T7112

New

Nickel-plated brass
Thread NPTF (pre-applied sealant)



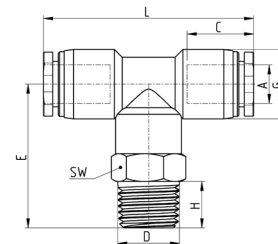
Mod.	A OD	D NPTF	C	G	H	L	L2	M	SW	Weight (lb)	Weight (g)	
T7112 53-32	5/32	10-32 UNF	0,583	0,413	0,142	0,803	1,39	0,642	7/16	0,017	7,7	●
T7110 53-02	5/32	1/8	0,583	0,413	0,335	0,945	1,531	0,642	7/16	0,021	9,7	-
T7110 04-02	1/4	1/8	0,661	0,512	0,335	0,996	1,701	0,764	1/2	0,032	14,6	-
T7110 04-04	1/4	1/4	0,661	0,512	0,413	1,102	1,807	0,764	9/16	0,043	19,6	-
T7110 05-02	5/16	1/8	0,724	0,583	0,335	1,102	1,89	0,858	9/16	0,039	17,5	-
T7110 05-04	5/16	1/4	0,724	0,583	0,413	1,181	1,969	0,858	9/16	0,05	22,5	-
T7110 05-06	5/16	3/8	0,724	0,583	0,453	1,22	2,008	0,858	11/16	0,078	35,5	-
T7110 06-02	3/8	1/8	0,791	0,689	0,335	1,079	1,941	0,909	11/16	0,052	23,8	-
T7110 06-04	3/8	1/4	0,791	0,689	0,413	1,157	2,02	0,909	11/16	0,061	27,8	-
T7110 06-06	3/8	3/8	0,791	0,689	0,453	1,197	2,059	0,909	11/16	0,072	32,8	-
T7110 08-04	1/2	1/4	0,909	0,827	0,413	1,268	2,268	1,043	3/4	0,079	36	-
T7110 08-06	1/2	3/8	0,909	0,827	0,453	1,307	2,307	1,043	3/4	0,099	45	-
T7110 08-08	1/2	1/2	0,909	0,827	0,571	1,425	2,425	1,043	7/8	0,139	63	-

- = with pre-applied sealant
● = with O-Ring

Male branch tee fitting Mod. T7430 - T7432

New

Nickel-plated brass
Thread NPTF (pre-applied sealant)



Mod.	A OD	D NPTF	C	E	G	H	L	SW	Weight (lb)	Weight (g)	
T7432 53-32	5/32	10-32 UNF	0,583	0,842	0,413	0,142	1,457	7/16	0,021	9,6	●
T7430 53-02	5/32	1/8	0,583	0,984	0,413	0,335	1,457	7/16	0,026	11,6	-
T7430 53-04	5/32	1/4	0,661	1,102	0,413	0,413	1,457	9/16	0,344	15,6	-
T7430 04-02	1/4	1/8	0,661	1,094	0,512	0,335	1,614	1/2	0,036	16,4	-
T7430 04-04	1/4	1/4	0,724	1,2	0,512	0,413	1,614	9/16	0,049	22,4	-
T7430 04-06	1/4	3/8	0,724	1,24	0,512	0,453	1,614	11/16	0,093	42,4	-
T7430 06-02	3/8	1/8	0,724	1,181	0,689	0,335	1,874	11/16	0,076	34,4	-
T7430 06-04	3/8	1/4	0,791	1,259	0,689	0,413	1,874	11/16	0,085	38,4	-
T7430 06-06	3/8	3/8	0,791	1,299	0,689	0,453	1,874	11/16	0,096	43,4	-
T7430 06-08	3/8	1/4	0,791	1,299	0,689	0,571	1,874	7/8	0,129	58,4	-
T7430 08-04	1/2	1/4	0,909	1,397	0,827	0,413	2,228	3/4	0,099	45	-
T7430 08-06	1/2	3/8	0,909	1,437	0,827	0,453	2,228	3/4	0,119	54	-
T7430 08-08	1/2	1/2	0,909	1,555	0,827	0,571	2,228	7/8	0,163	74	-

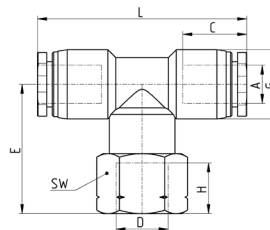
- = with pre-applied sealant
● = with O-Ring

FITTINGS, CONNECTORS AND TUBES

10

GRIPFIT PUSH-IN FITTINGS
SERIES 7000 - INCH - DIMENSIONAL CHARACTERISTICS
Female branch tee fitting Mod. T7433

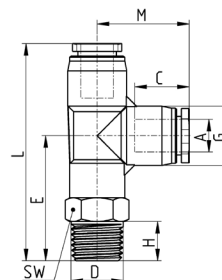
New

 Nickel-plated brass
 Thread NPTF


Mod.	A OD	D NPTF	C	E	G	H	L	SW	Weight (lb)	Weight (g)
T7433 04-02	1/4	1/8	0,661	0,984	0,512	0,374	1,6	9/16	0,076	34,4
T7433 04-04	1/4	1/4	0,661	1,083	0,512	0,453	1,6	11/16	0,082	37,4
T7433 05-04	5/16	1/4	0,724	1,102	0,583	0,453	1,8	11/16	0,093	42,4
T7433 05-06	5/16	3/8	0,724	1,142	0,583	0,492	1,8	7/8	0,1	45,4
T7433 06-04	3/8	1/4	0,791	1,122	0,689	0,453	1,9	11/16	0,151	68,4

Male run tee fitting Mod. T7440 - T7442

New

 Nickel-plated brass
 Thread NPTF (pre-applied sealant)


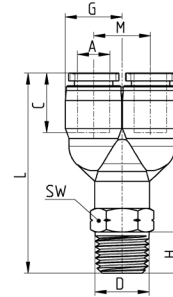
Mod.	A OD	D NPTF	C	E	G	H	L	M	SW	Weight (lb)	Weight (g)
T7442 53-32	5/32	10-32 UNF	0,583	0,882	0,413	0,142	1,65	0,768	7/16	0,021	9,6 ●
T7440 53-02	5/32	1/8	0,583	1,024	0,413	0,335	1,791	0,768	7/16	0,026	11,6 -
T7440 53-04	5/32	1/4	0,583	1,142	0,413	0,413	1,909	0,768	9/16	0,034	15,6 -
T7440 04-02	1/4	1/8	0,661	1,094	0,512	0,335	1,941	0,846	1/2	0,036	16,4 -
T7440 04-04	1/4	1/4	0,661	1,201	0,512	0,413	2,047	0,846	9/16	0,049	22,4 -
T7440 04-06	1/4	3/8	0,661	1,24	0,512	0,453	2,087	0,846	11/16	0,093	42,4 -
T7440 06-04	3/8	1/4	0,791	1,319	0,689	0,413	2,335	1,016	11/16	0,085	38,4 -
T7440 06-06	3/8	3/8	0,791	1,358	0,689	0,453	2,374	1,016	11/16	0,096	43,4 -
T7440 06-08	3/8	1/2	0,791	1,476	0,689	0,571	2,492	1,016	7/8	0,129	58,4 -
T7440 08-04	1/2	1/4	0,909	1,398	0,827	0,413	2,591	1,193	3/4	0,099	45 -
T7440 08-06	1/2	3/8	0,909	1,437	0,827	0,453	2,63	1,193	3/4	0,119	54 -
T7440 08-08	1/2	1/2	0,909	1,555	0,827	0,571	2,748	1,193	7/8	0,163	74 -

 - = with pre-applied sealant
 ● = with O-Ring

Male Y fitting Mod. T7450 - T7452

New

Nickel-plated brass
Thread NPTF (pre-applied sealant)



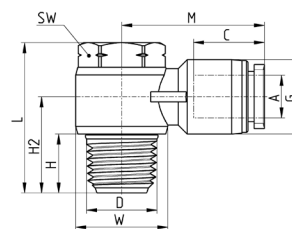
Mod.	A OD	D NPTF	C	G	H	L	M	SW	Weight (lb)	Weight (g)	
T7450 53-02	5/1	1/8	0,61	0,413	0,335	1,728	0,413	7/16	0,026	11,6	-
T7450 53-04	5/32	1/4	0,61	0,413	0,413	1,846	0,413	9/16	0,039	17,6	-
T7452 04-32	1/4	10-32 UNF	0,705	0,512	0,142	1,803	0,512	1/2	0,034	15,4	●
T7450 04-02	1/4	1/8	0,705	0,512	0,335	1,878	0,512	1/2	0,041	18,4	-
T7450 04-04	1/4	1/4	0,705	0,512	0,413	1,984	0,512	9/16	0,043	19,4	-
T7450 05-04	5/16	1/4	0,736	0,583	0,413	1,996	0,571	9/16	0,063	28,4	-
T7450 05-06	5/16	3/8	0,736	0,583	0,453	2,047	0,571	11/16	0,065	29,4	-
T7450 05-08	5/16	1/2	0,736	0,583	0,571	2,165	0,571	7/8	0,109	49,4	-
T7450 06-02	3/8	1/8	0,795	0,689	0,335	2,075	0,693	11/16	0,063	28,4	-
T7450 06-04	3/8	1/4	0,795	0,689	0,413	2,154	0,693	11/16	0,08	36,4	-
T7450 06-06	3/8	3/8	0,795	0,689	0,453	2,193	0,693	11/16	0,085	38,4	-
T7450 06-08	3/8	1/2	0,795	0,689	0,571	2,311	0,693	7/8	0,129	58,4	-
T7450 08-04	1/2	1/4	0,906	0,827	0,413	2,543	0,827	3/4	0,128	58	-
T7450 08-06	1/2	3/8	0,906	0,827	0,453	2,583	0,827	3/4	0,15	68	-
T7450 08-08	1/2	1/2	0,906	0,827	0,571	2,701	0,827	7/8	0,172	78	-

- = with pre-applied sealant
● = with O-Ring

Male banjo fitting Mod. T7622 - T7631

New

Thread NPTF (O-ring)



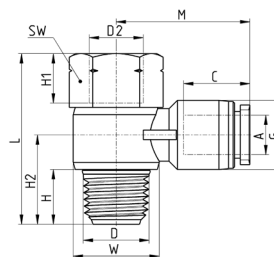
Mod.	A OD	D NPTF	C	G	H	H2	L	M	SW	W	Weight (lb)	Weight (g)	
T7622 53-32	5/32	10-32 UNF	0,583	0,413	0,142	0,406	0,717	0,795	5/16	0,394	0,017	7,8	●
T7631 04-02	1/4	1/8	0,661	0,512	0,335	0,61	1,024	0,98	7/16	0,559	0,052	23,7	-
T7631 04-04	1/4	1/4	0,661	0,512	0,413	0,705	1,154	1,055	19/32	0,717	0,079	35,7	-
T7622 04-32	1/4	10-32 UNF	0,661	0,512	0,142	0,417	0,717	0,933	5/16	0,394	0,019	8,7	●
T7631 05-02	5/16	1/8	0,724	0,583	0,335	0,65	1,024	1,051	7/16	0,559	0,077	34,7	-
T7631 06-04	3/8	1/4	0,772	0,689	0,413	0,795	1,154	1,22	19/32	0,717	0,131	59,2	-
T7631 06-06	3/8	3/8	0,772	0,689	0,453	0,827	1,303	1,213	3/4	0,89	0,197	89,2	-

- = with pre-applied sealant
● = with O-Ring

Female banjo fitting Mod. T7633 - T6333

New

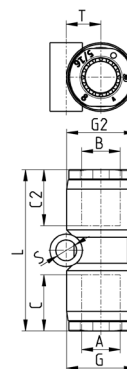
Thread NPTF (pre-applied sealant)



Mod.	A OD	D NPTF	C	D NPT	G	H	H1	H2	L	M	SW	W	Weight (lb)	Weight (g)
T7633 04-02	1/4	1/8	0,661	1/8	0,512	0,335	0,354	0,61	1,217	0,98	9/16	0,559	0,043	19,7
T7633 04-04	1/4	1/4	0,661	1/4	0,512	0,413	0,433	0,705	1,409	1,055	11/16	0,717	0,074	33,7
T6333 06-04	3/8	1/4	0,791	1/4	0,689	0,413	0,433	0,795	1,409	1,22	11/16	0,717	0,086	39,2

Reducer union / Equal union fitting Mod. T7580

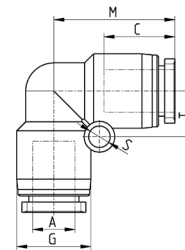
New



Mod.	A OD	B	C	C2	G	G2	L	S	T	Weight (lb)	Weight (g)
T7580 53-00	5/32	5/32	0,583	0,583	0,413	0,413	1,339	0,130	0,177	0,008	3,6
T7580 04-53	1/4	5/32	0,661	0,583	0,512	0,413	1,394	-	-	0,012	5,5
T7580 04-00	1/4	1/4	0,661	0,661	0,512	0,512	1,449	0,138	0,268	0,014	6,4
T7580 05-00	5/16	5/16	0,724	0,724	0,583	0,583	1,547	0,177	0,295	0,019	8,4
T7580 06-04	3/8	1/4	0,791	0,661	0,689	0,512	1,563	-	-	0,017	7,9
T7580 06-00	3/8	3/8	0,791	0,791	0,689	0,689	1,677	0,177	0,366	0,030	13,4
T7580 08-00	1/2	1/2	0,909	0,909	0,827	0,827	1,925	0,177	0,413	0,042	19,0
T7580 08-06	1/2	3/8	0,909	0,791	0,827	0,689	1,783	-	-	0,036	16,2

Union elbow fitting Mod. T7550

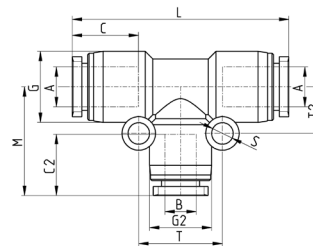
New



Mod.	A OD	C	G	M	S	T	Weight (lb)	Weight (g)
T7550 53-00	5/32	0,583	0,413	0,740	0,130	0,272	0,010	4,6
T7550 04-00	1/4	0,661	0,512	0,839	0,138	0,327	0,016	7,4
T7550 05-00	5/16	0,724	0,583	0,933	0,165	0,350	0,021	9,4
T7550 06-00	3/8	0,791	0,689	1,016	0,177	0,433	0,032	14,4
T7550 08-00	1/2	0,909	0,827	1,193	0,177	0,504	0,049	22,0

Reducer tee / Equal tee fitting Mod. T7540

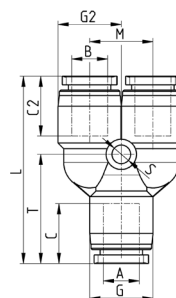
New



Mod.	A OD	B	C	C2	G	G2	M	L	S	T	T2	Weight (lb)	Weight (g)
T7540 04-04-53	1/4	5/32	0,661	0,583	0,512	0,413	0,783	1,598	0,169	0,571	0,327	0,018	8,2
T7540 53-00	5/32	5/32	0,583	0,583	0,413	0,413	0,736	1,417	0,130	0,504	0,268	0,007	3,4
T7540 04-00	1/4	1/4	0,661	0,661	0,512	0,512	0,839	1,677	0,138	0,650	0,327	0,011	4,8
T7540 05-00	5/16	5/16	0,724	0,724	0,583	0,583	0,933	1,787	0,177	0,760	0,382	0,015	6,8
T7540 06-00	3/8	3/8	0,791	0,791	0,689	0,689	1,016	2,031	0,177	0,866	0,433	0,018	8,0
T7540 06-06-04	3/8	1/4	0,791	0,661	0,689	0,512	0,921	1,913	0,177	0,689	0,433	0,038	17,1
T7540 08-00	1/2	1/2	0,909	0,909	0,827	0,827	1,193	2,386	0,177	1,004	0,504	0,022	10,0
T7540 08-08-06	1/2	3/8	0,909	0,791	0,827	0,689	1,035	2,307	0,177	0,866	0,504	0,056	25,2

Reducer Y / Equally fitting Mod. T7560

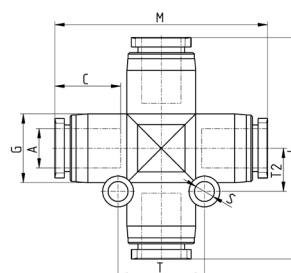
New



Mod.	A OD	B	C	C2	G	G2	L	M	S	T	Weight (lb)	Weight (g)
T7560 53-00	5/32	5/32	0,63	0,63	0,413	0,413	1,417	0,413	0,13	0,846	0,016	7,4
T7560 04-00	1/4	1/4	0,705	0,705	0,512	0,512	1,567	0,512	0,13	0,898	0,02	9,1
T7560 05-00	5/16	5/16	0,736	0,736	0,583	0,575	1,705	0,575	0,169	0,992	0,029	13,1
T7560 06-04	3/8	1/4	0,78	0,705	0,689	0,512	1,701	0,512	0,13	1,039	0,032	14,6
T7560 06-00	3/8	3/8	0,78	0,78	0,689	0,689	1,854	0,689	0,177	1,114	0,043	19,6
T7560 08-06	1/2	3/8	0,906	0,78	0,827	0,689	2	0,689	0,177	1,26	0,058	26,2
T7560 08-00	1/2	1/2	0,906	0,906	0,827	0,827	2,146	0,827	0,177	1,268	0,064	29

Union cross fitting Mod. T7600

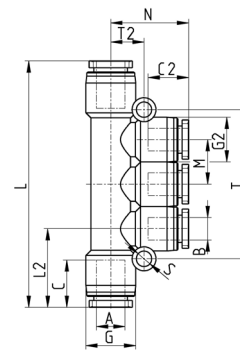
New



Mod.	A OD	C	G	L	M	S	T	T2	Weight (lb)	Weight (g)
T7600 04-00	1/4	0,661	0,512	1,677	1,677	0,130	0,642	0,323	0,024	10,8
T7600 06-00	3/8	0,772	0,689	1,996	1,906	0,169	0,799	0,402	0,059	26,8

Reducer triple branch union fitting Mod. T7545

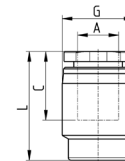
New



Mod.	A OD	B	C	C2	G	G2	L	L2	M	N	S	T	T2	Weight (lb)	Weight (g)
T7545 04-53	1/4	5/32	0,661	0,583	0,512	0,413	2,425	0,799	0,413	0,803	0,177	1,417	0,346	0,053	24,1
T7545 06-04	3/8	1/4	0,791	0,661	0,689	0,512	2,921	0,949	0,512	0,921	0,177	1,713	0,433	0,118	53,3

Tube cap fitting Mod. T7750

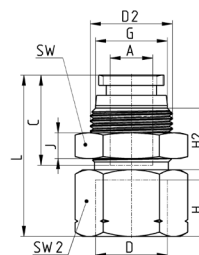
New



Mod.	A OD	C	G	L	Weight (lb)	Weight (g)
T7750 53-00	5/32	0,583	0,413	0,736	0,004	2
T7750 04-00	1/4	0,661	0,512	0,783	0,007	3
T7750 05-00	5/16	0,724	0,583	0,846	0,009	4
T7750 06-00	3/8	0,791	0,689	0,898	0,015	7
T7750 08-00	1/2	0,909	0,827	1,024	0,022	10

GRIPFIT PUSH-IN FITTINGS
SERIES 7000 - INCH - DIMENSIONAL CHARACTERISTICS
Bulkhead female straight fitting Mod. T6593

New


 Nickel-plated brass
 Thread NPTF


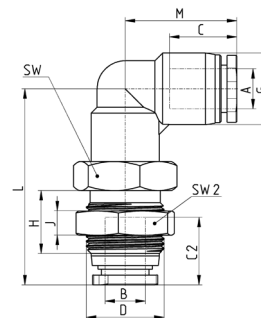
Mod.	A OD	D NPTF	C	D2 (T2)	F	H	H2	J	L	SW	SW2	Weight (lb)	Weight (g)
T6593 53-02	5/32	1/8	0,583	M12x1	0,413	0,374	0,417	0,157	1,067	9/16	0,551	0,044	19,8
T6593 04-02	1/4	1/8	0,661	M14x1	0,512	0,374	0,413	0,157	1,22	11/16	0,669	0,075	33,8
T6593 04-04	1/4	1/4	0,661	M14x1	0,512	0,453	0,413	0,157	1,22	11/16	0,669	0,061	27,8
T6593 05-02	5/16	1/8	0,724	M16x1	0,551	0,374	0,472	0,197	1,24	3/4	0,748	0,096	43,7
T6593 05-04	5/16	1/4	0,724	M16x1	0,551	0,453	0,472	0,197	1,24	3/4	0,748	0,085	38,7
T6593 05-06	5/16	3/8	0,724	M16x1	0,551	0,492	0,472	0,197	1,28	7/8	0,748	0,101	45,7
T6593 06-06	3/8	3/8	0,791	M20x1	0,657	0,492	0,488	0,197	1,402	15/16	0,945	0,142	64,4
T6593 08-06	1/2	3/8	0,909	M22x1	0,819	0,492	0,669	0,197	1,571	15/16	1,024	0,194	88,1
T6593 08-08	1/2	1/2	0,909	M22x1	0,819	0,571	0,669	0,197	1,571	15/16	1,024	0,15	68,1

Bulkhead union elbow fitting Mod. T7529

New



Nickel-plated brass

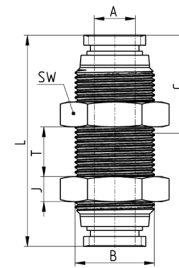


Mod.	A OD	D	B	C	C2	G	H	J	L	M	SW	Weight (lb)	Weight (g)
T7529 53-00	5/32	M12x1	5/32	0,583	0,583	0,413	0,413	0,157	1,280	0,728	0,551	0,028	12,6
T7529 04-00	1/4	M14x1	1/4	0,661	0,665	0,512	0,492	0,157	1,531	0,807	0,669	0,034	15,5

Bulkhead union fitting Mod. T6590

New

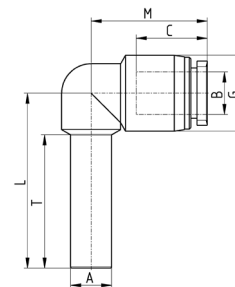
Nickel-plated brass



Mod.	A OD	B	C	J	L	SW	T	Weight (lb)	Weight (g)
T6590 53-00	5/32	M12x1	0,583	0,157	1,402	0,551	0,61	0,043	19,6
T6590 04-00	1/4	M14x1	0,661	0,157	1,535	0,669	0,693	0,065	29,6
T6590 05-00	5/16	M16x1	0,724	0,197	1,665	0,748	0,72	0,08	36,4
T6590 06-00	3/8	M20x1	0,791	0,197	1,701	0,945	0,626	0,132	59,8
T6590 08-00	1/2	M22x1	0,909	0,197	1,949	1,024	0,984	0,183	83,2

Push-in elbow fittings Mod. T7555

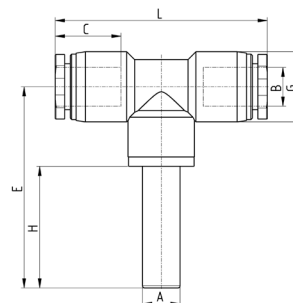
New



Mod.	A OD	B	C	G	L	M	T	Weight (lb)	Weight (g)
T7555 53-00	5/32	5/32	0,583	0,413	1,118	0,728	0,866	0,011	4,8
T7555 04-00	1/4	1/4	0,661	0,512	1,614	0,807	0,984	0,015	6,7
T7555 05-00	5/16	5/16	0,724	0,583	1,343	0,894	1,024	0,017	7,7
T7555 06-00	3/8	3/8	0,791	0,689	1,803	0,937	1,102	0,031	14,2
T7555 08-00	1/2	1/2	0,909	0,827	2,028	1,114	1,181	0,042	19,0

Plug-in branch tee fitting Mod. T7435

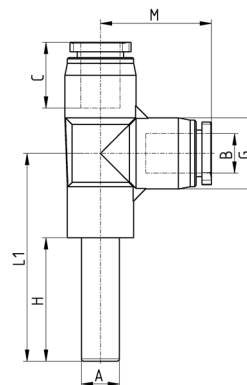
New



Mod.	A OD	B	C	E	G	H	L	Weight (lb)	Weight (g)
T7435 53-00	5/32	5/32	0,583	1,476	0,413	0,945	1,457	0,026	11,6
T7435 04-00	1/4	1/4	0,661	1,614	0,512	0,984	1,614	0,036	16,4
T7435 06-00	3/8	3/8	0,791	1,803	0,689	1,102	1,874	0,089	40,4

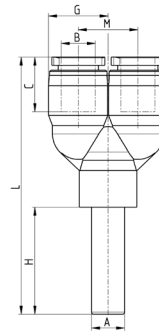
Plug-in run tee fitting Mod. T7445

New



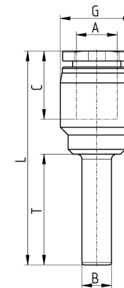
Mod.	A OD	B	C	G	H	L	L1	M	Weight (lb)	Weight (g)
T7445 04-00	1/4	1/4	0,661	0,512	0,984	2,461	1,614	0,846	0,036	16,40
T7445 06-00	3/8	3/8	0,791	0,689	1,102	2,878	1,862	1,016	0,089	40,40
T7445 08-00	1/2	1/2	0,909	0,827	1,181	3,220	2,028	1,193	0,110	50,00

Plug-in Y fitting Mod. T7565

Mod.	A OD	B	C	G	H	L	M	Weight (lb)	Weight (g)
T7565 53-00	5/32	5/32	0,61	0,413	0,945	2,22	0,413	0,021	9,6
T7565 04-00	1/4	1/4	0,705	0,512	0,984	2,398	0,512	0,032	14,4
T7565 05-00	5/16	5/16	0,736	0,583	1,024	2,461	0,571	0,049	22,4
T7565 06-00	3/8	3/8	0,795	0,689	1,102	2,697	0,693	0,085	38,4

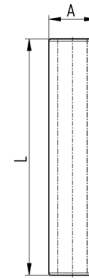
Plug-in reducer fitting Mod. T7800

Mod.	A OD	B	C	G	L	T	Weight (lb)	Weight (g)
T7800 04-53	5/32	1/4	0,583	0,413	1,583	0,894	0,008	3,8
T7800 53-04	1/4	5/32	0,661	0,512	1,488	0,728	0,006	2,7
T7800 05-04	1/4	5/16	0,661	0,512	1,890	1,130	0,010	4,7
T7800 06-04	1/4	3/8	0,661	0,512	1,890	1,232	0,010	4,7
T7800 06-05	5/16	3/8	0,724	0,583	1,760	0,957	0,013	5,7
T7800 08-04	1/4	1/2	0,661	0,512	1,902	1,154	0,013	5,7
T7800 08-06	3/8	1/2	0,791	0,689	2,039	1,209	0,014	6,2

Tube splicer Mod. T7950

New



Mod.	A OD	L	Weight (lb)	Weight (g)
T7950 53-00	5/32	1,417	0,002	1,0
T7950 04-00	1/4	1,575	0,002	1,0
T7950 06-00	3/8	1,772	0,007	3,0
T7950 08-00	1/2	1,969	0,009	4,0