

New

FUNCTION FITTINGS

SERIES CL - INCH



- Optimum sealing
- Maximum flow
- Compact and lightweight
- Applications:
 - Robotics
 - Packaging
 - Textile
 - Machine Tools
 - Pneumatic Systems
 - Vacuum

Flow Controls

Flow controls are unidirectional.

In-Line Non-return

Valves Used where air flow passes only in one direction.
Used where the air pressure is required to remain constant on the exhaust side.

Shut-off Valves

Enable in-line opening and closing of a pneumatic circuit.
Rotation of the handle to open or shut compressed air for the pneumatic devices.

General Data

Applicable fluid	compressed air (Not applicable to gases or liquids)
Operating pressure	150 PSI / 10.3 Bar 14.5 - 150 PSI (Flow Control Valve) The combination with the applied tube shall be decided based on the maximum operating pressure of the tube.
Cracking pressure	1.5-3 PSI (Check Valve)
Negative pressure	29.5" Hg (Check Valve and Ball Valve only)
Operating temperature range	32~140° F / 0~60°C

Cutaway



Meter-in /out flow control

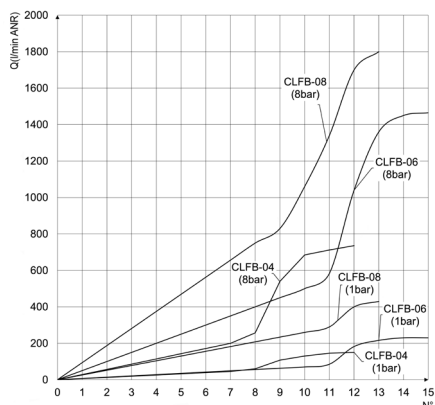
Hand valve

Check valve

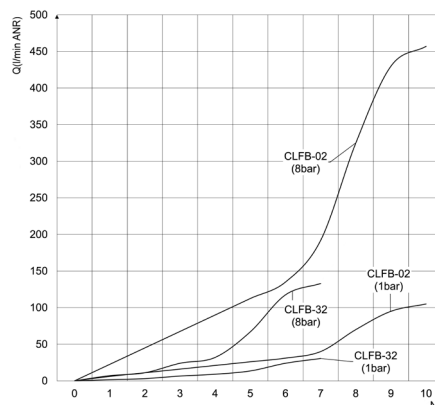
Flow control

Flow diagrams (1 → 2) - valves Series CL

CLFB



N° = Number of screw turns
 Q = Flow

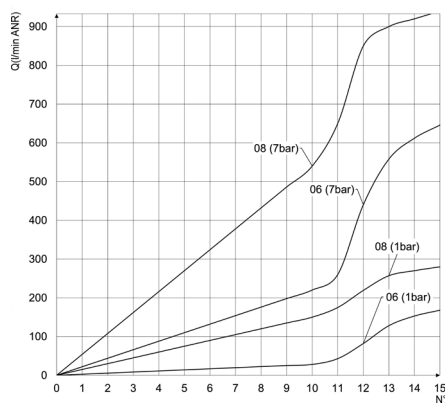


N° = Number of screw turns
 Q = Flow

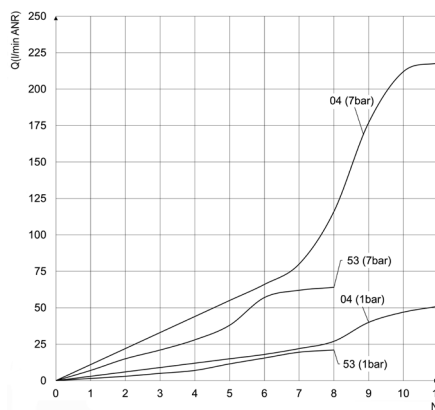
FITTINGS, CONNECTORS AND TUBES

10

CLF-T

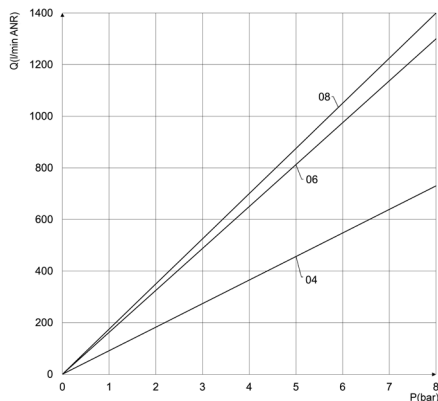


N° = Number of screw turns
 Q = Flow



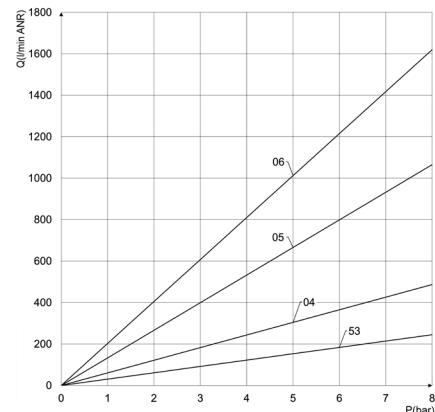
N° = Number of screw turns
 Q = Flow

CL29



P = Regulated outlet pressure
 Q = Flow

CLVNR



P = Regulated outlet pressure
 Q = Flow

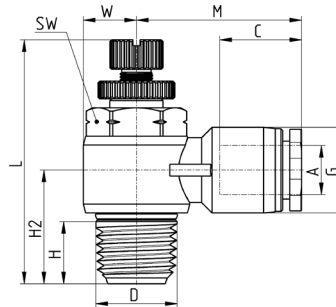
New

Meter-out flow control Mod. CLFB-C

NPTF (pre-applied sealant)



RP02



Mod.	A OD	D NPTF	C	G	H	H2	L Min.	L Max.	M	SW	W	Weight (lb)	Weight (g)	
CLFB-32-53-C	5/32	10-32 UNF	0,583	0,413	0,142	0,406	1,059	1,146	0,839	5/16	0,394	0,022	9,8	●
CLFB-02-53-C	5/32	1/8	0,583	0,413	0,323	0,594	1,374	1,567	0,925	7/16	0,559	0,041	18,8	-
CLFB-04-53-C	5/32	1/4	0,583	0,413	0,433	0,724	1,598	1,85	1	19/32	0,717	0,077	34,8	-
CLFB-32-04-C	1/4	10-32 UNF	0,661	0,512	0,142	0,417	1,059	1,146	0,933	5/16	3,937	0,024	10,7	●
CLFB-02-04-C	1/4	1/8	0,661	0,512	0,323	0,598	1,374	1,567	9,803	7/16	5,591	0,043	19,7	-
CLFB-04-04-C	1/4	1/4	0,661	0,512	0,433	0,724	1,598	1,85	1,055	19/32	0,717	0,079	35,7	-
CLFB-06-04-C	1/4	3/8	0,661	0,512	0,516	0,862	1,886	2,161	11,181	5/16	0,89	0,147	66,7	-
CLFB-02-05-C	5/16	1/8	0,724	0,571	0,323	0,638	1,374	1,567	1,031	7/16	0,559	0,048	21,7	-
CLFB-04-05-C	5/16	1/4	0,724	0,571	0,433	0,756	1,598	1,85	11,063	19/32	7,165	0,083	37,7	-
CLFB-06-05-C	5/16	3/8	0,724	0,571	0,516	0,862	1,886	2,161	1,15	3/4	0,89	0,154	69,7	-
CLFB-04-06-C	3/8	1/4	0,791	0,689	0,433	0,815	1,598	1,85	1,22	19/32	0,717	0,086	39,2	-
CLFB-06-06-C	3/8	3/8	0,791	0,689	0,516	0,89	1,886	2,161	1,213	3/4	0,89	0,155	70,2	-
CLFB-08-06-C	3/8	1/2	0,791	0,689	0,65	1,043	2,122	2,413	1,299	15/16	1,102	0,241	109,2	-
CLFB-06-08-C	1/2	3/8	0,909	0,819	0,516	0,949	1,886	2,161	1,339	3/4	0,89	0,163	74	-
CLFB-08-08-C	1/2	1/2	0,909	0,819	0,65	1,091	2,122	2,413	1,437	15/16	1,102	0,262	119	-

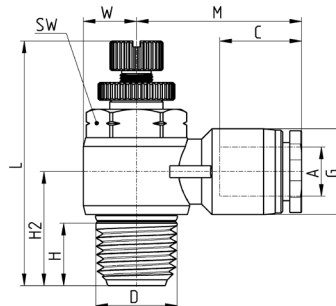
- = with pre-applied sealant
 ● = with O-Ring

Meter-in flow control Mod. CLFB-V

NPTF (pre-applied sealant)



RP01



Mod.	A OD	D NPTF	C	G	H	H2	L Min.	L Max.	M	SW	W	Weight (lb)	Weight (g)	
CLFB-32-53-V	5/32	10-32 UNF	0,583	0,413	0,142	0,406	1,059	1,146	0,839	5/16	0,394	0,022	9,8	●
CLFB-02-53-V	5/32	1/8	0,583	0,413	0,323	0,594	1,374	1,567	0,925	7/16	0,559	0,041	18,8	-
CLFB-04-53-V	5/32	1/4	0,583	0,413	0,433	0,724	1,598	1,85	1	19/32	0,717	0,077	34,8	-
CLFB-32-04-V	1/4	10-32 UNF	0,661	0,512	0,142	0,417	1,059	1,146	0,933	5/16	3,937	0,024	10,7	●
CLFB-02-04-V	1/4	1/8	0,661	0,512	0,323	0,598	1,374	1,567	9,803	7/16	5,591	0,043	19,7	-
CLFB-04-04-V	1/4	1/4	0,661	0,512	0,433	0,724	1,598	1,85	1,055	19/32	0,717	0,079	35,7	-
CLFB-02-05-V	5/16	1/8	0,724	0,571	0,323	0,638	1,374	1,567	1,031	7/16	0,559	0,048	21,7	-
CLFB-04-05-V	5/16	1/4	0,724	0,571	0,433	0,756	1,598	1,85	11,063	19/32	7,165	0,083	37,7	-
CLFB-04-06-V	3/8	1/4	0,791	0,689	0,433	0,815	1,598	1,85	1,22	19/32	0,717	0,086	39,2	-
CLFB-06-06-V	3/8	3/8	0,791	0,689	0,516	0,89	1,886	2,161	1,213	3/4	0,89	0,155	70,2	-
CLFB-08-06-V	3/8	1/2	0,791	0,689	0,65	1,043	2,122	2,413	1,229	15/16	1,102	0,241	109,2	-

- = with pre-applied sealant
 ● = with O-Ring

FITTINGS, CONNECTORS AND TUBES

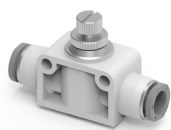
10

FUNCTION FITTINGS

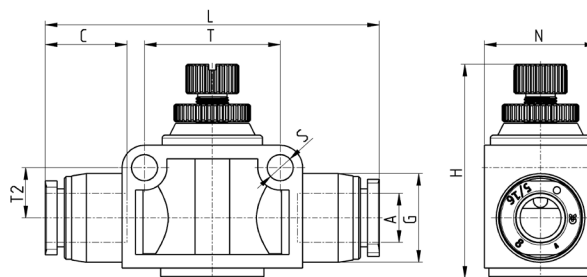
SERIES CL - INCH - DIMENSIONAL CHARACTERISTICS

Flow control - Union straight Mod. CLF-T

New



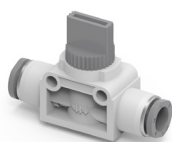
RFU1



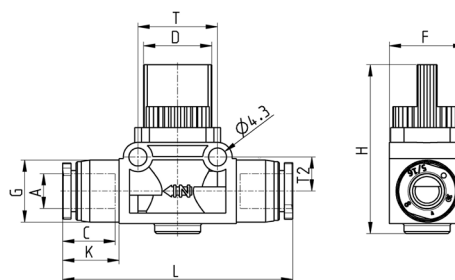
Mod.	A OD	C	G	H Min.	H Max.	L	N	S	T	T2	Weight (lb)	Weight (g)
CLF-T-04-U	1/4	0,661	0,512	1,319	1,492	1,972	0,630	0,169	0,803	3,071	0,065	29,40
CLF-T-06-U	3/8	0,791	0,689	1,602	1,917	2,480	0,906	0,169	1,087	0,417	0,186	84,40
CLF-T-08-U	1/2	0,909	0,827	1,772	2,106	2,909	1,043	0,173	1,276	0,469	0,273	124,00

Hand valve - Union straight Mod. CL29

New



VN39



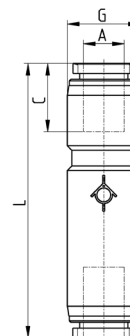
Mod.	A OD	D	C	F	G	H	K	L	T	T2	Weight (lb)	Weight (g)
CL29-04-A	1/4	0,642	0,661	0,709	0,512	1,587	0,492	2,087	0,748	0,323	0,049	22,40
CL29-06-A	3/8	0,760	0,791	0,835	0,689	1,594	0,567	2,433	0,945	0,429	0,089	40,40
CL29-08-A	1/2	0,760	0,909	0,835	0,827	1,594	0,701	2,701	0,945	0,429	0,104	47,00

Check valve - Union straight Mod. CLVNR

New



VNR1



Mod.	A OD	C	G	L	Weight (lb)	Weight (g)
CLVNR-53	5/32	0,583	0,413	1,665	0,011	4,9
CLVNR-04	1/4	0,661	0,512	1,906	0,018	8,2
CLVNR-05	5/16	0,724	0,571	2,189	0,028	12,9
CLVNR-06	3/8	0,791	0,906	2,555	0,096	43,5