

Series CGP parallel grippers

Magnetic

Sizes: \varnothing 10, 16, 20, 25, 32 mm



- » High durability
- » Compact design
- » High gripping force

The proximity switches can be inserted in the U-shaped grooves on the body. For an easier installation the gripper can also be equipped with an optional installation adaptor mod. C-CGP (female) or L-CGP (male).

Series CGP parallel grippers are available in 5 different sizes.

The closing action of the gripper is generated from the cylinder's thrust side, resulting in a higher gripping force. The gripper is equipped with ring bearings in the sliding section for higher durability. Gripper mod. CGP has mounting holes on three sides which provides flexibility in installation.

GENERAL DATA

Model	CGP-10	CGP-16	CGP-20	CGP-25	CGP-32
Bore sizes (mm)	\varnothing 10	\varnothing 16	\varnothing 20	\varnothing 25	\varnothing 32
Type of operation	double-acting				
Operating pressure	1.5 ÷ 7 bar				
Operating temperature	0°C ÷ 80°C				
Max. operating frequency	180 cycles/min				
Lubrication	lever section - lubrication required on sliding section				
Opening stroke (mm)	\varnothing 10 = 4	\varnothing 16 = 8	\varnothing 20 = 12	\varnothing 25 = 14	\varnothing 32 = 16
Theoretical holding force - opening (N)	\varnothing 10 = 8	\varnothing 16 = 24	\varnothing 20 = 47	\varnothing 25 = 75	\varnothing 32 = 100
	P = Related to a pressure of 5 bar with gripping point length 3 cm				
Theoretical holding force - closing (N)	\varnothing 10 = 5	\varnothing 16 = 8	\varnothing 20 = 35	\varnothing 25 = 60	\varnothing 32 = 85
	P = Related to a pressure of 5 bar with gripping point length 3 cm				
Length of max gripping point L (cm)	3,0	4,0	6,0	7,0	8,5
	L = Related to a pressure of 5 bar				
Weight(g)	\varnothing 10 = 50	\varnothing 16 = 140	\varnothing 20 = 250	\varnothing 25 = 410	\varnothing 32 = 680
Port sizes	M5 (CGP-10 M3)				
Fluid	filtered air, without lubrication. In case lubricated air is used, it is recommended to use oil ISO VG32. Once applied, the lubrication should never be interrupted.				

CODING EXAMPLE

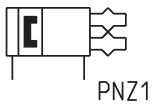
CGP	-	20
------------	----------	-----------

CGP	SERIES	PNEUMATIC SYMBOL
20	SIZES 10 16 20 25 32	PNZ1

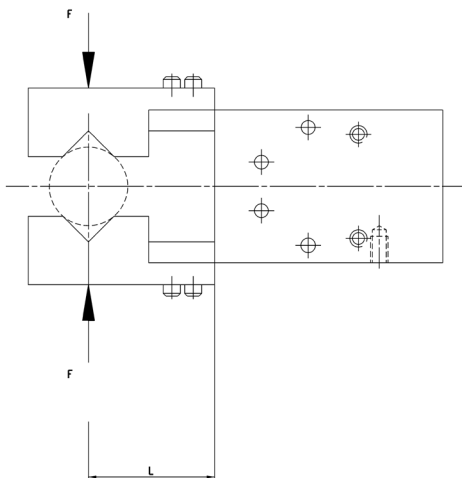
SERIES CGP PARALLEL GRIPPERS

PNEUMATIC SYMBOLS

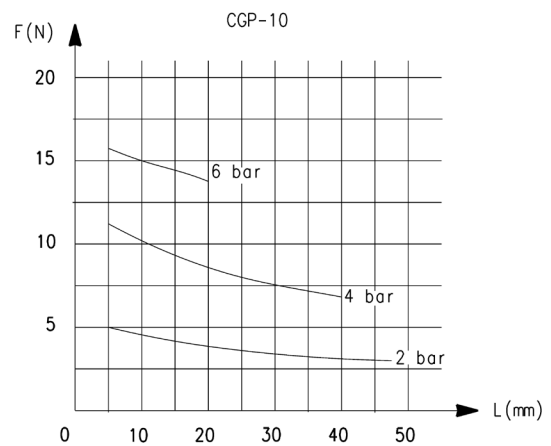
The pneumatic symbols which have been indicated in the CODING EXAMPLE are shown below.



GRIPPING FORCE CHARACTERISTICS

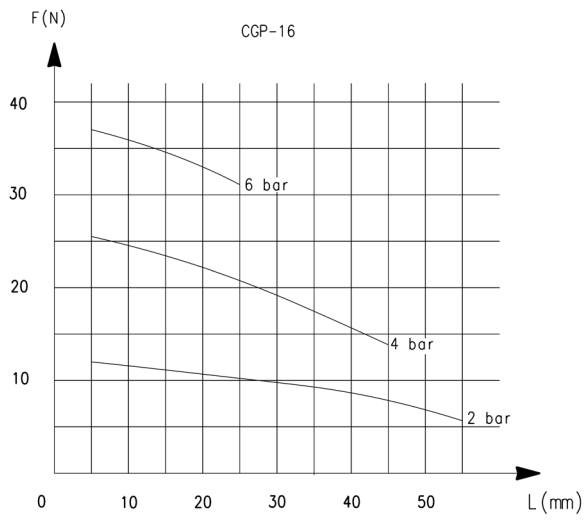


L = Gripping point length
F = Gripping Force

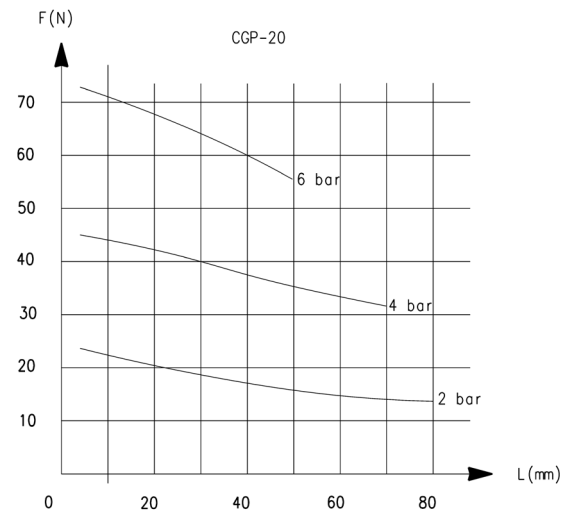


L = Gripping point length
F = Gripping Force

GRIPPING FORCE CHARACTERISTICS

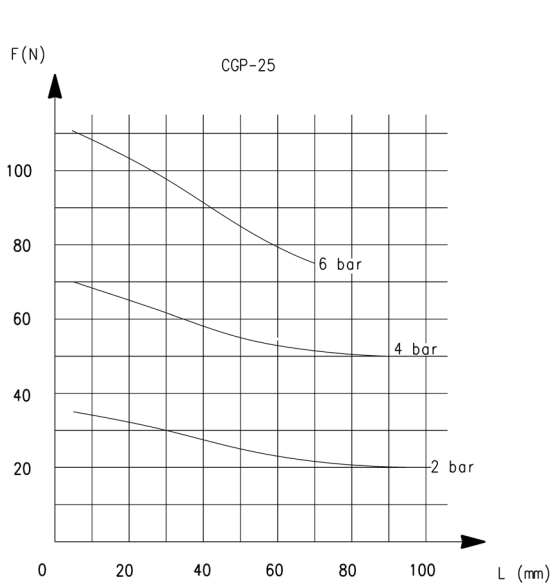


L = Gripping point length
F = Gripping Force

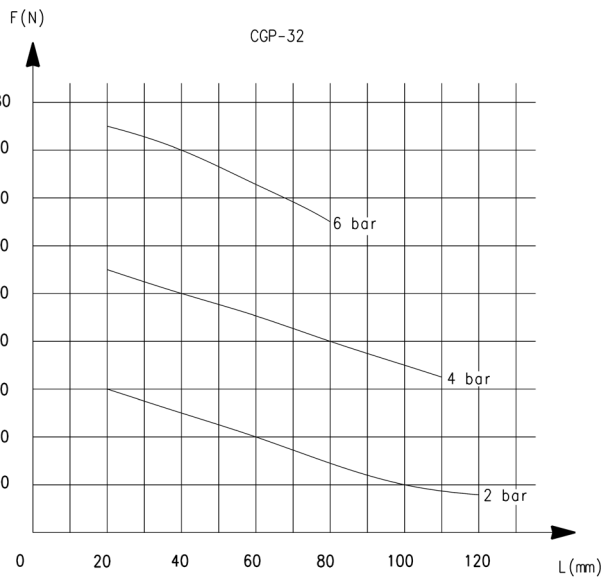


L = Gripping point length
F = Gripping Force

GRIPPING FORCE CHARACTERISTICS



L = Gripping point length
F = Gripping Force

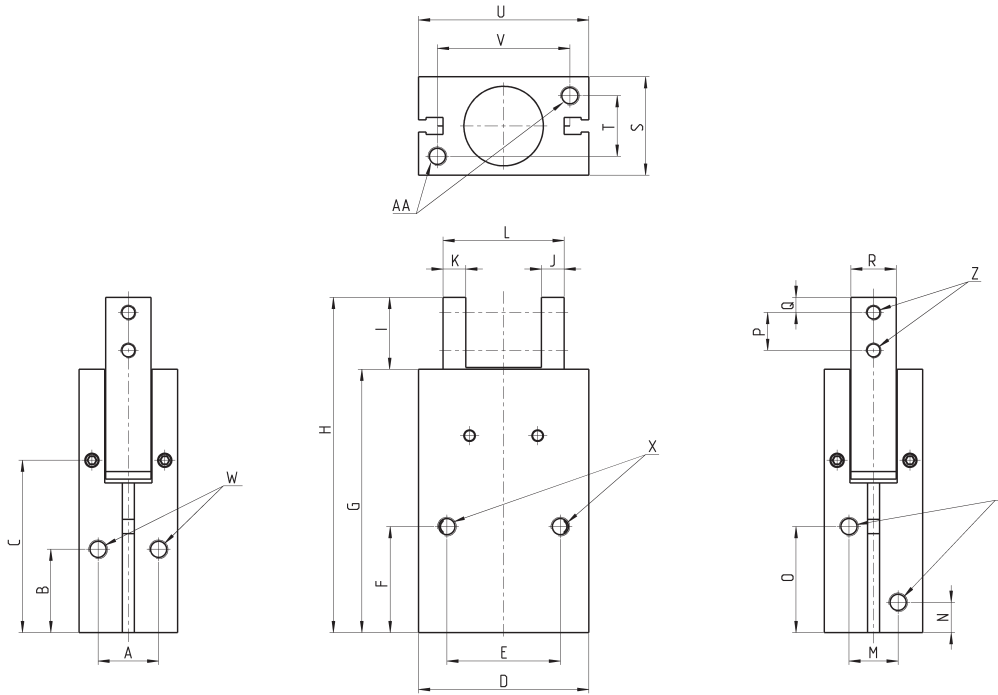


L = Gripping point length
F = Gripping Force

Parallel grippers Series CGP



SERIES CGP PARALLEL GRIPPERS

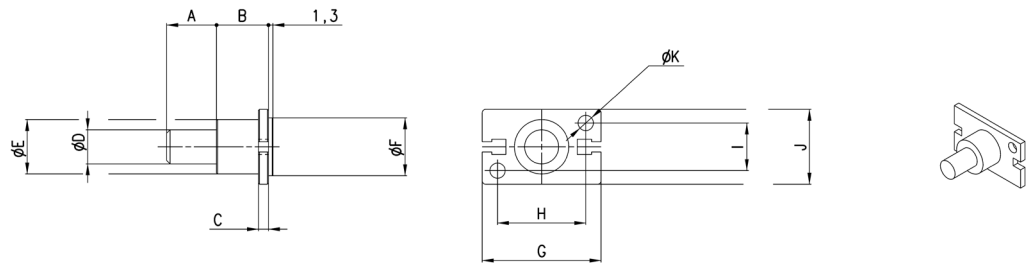


Y = port connection
Z = finger mounting-holes
X.W.AA = Mounting holes

DIMENSIONS																							
Mod.	A	B	C	D	E	F	G	H	I	J	K	L closed	L open	M	N	O	P	Q	R	S	T	U	V
CGP-10	10	15,5	31,5	23	18	20	45	58	13	4	4	18	22	10	7,5	19	6	3	7	16	10	23	17
CGP-16	14	21	39,5	34	24	25,5	58,8	73,5	15	5	5	25	33	12	7,5	25,5	8	3	11	22	14	34	26
CGP-20	16	22	45,5	45	30	28	69,5	88,5	19	6	6	32	44	13	8	28	10	4	12	26	16	45	35
CGP-25	20	24,5	51	52	36	31,5	79,5	103,5	24	8	8	37	51	18	9	31	12	5	14	32	20	52	40
CGP-32	26	30	56	60	44	37,5	88	119	31	9	9	44	60	24	10	35	15	7	18	40	26	60	46

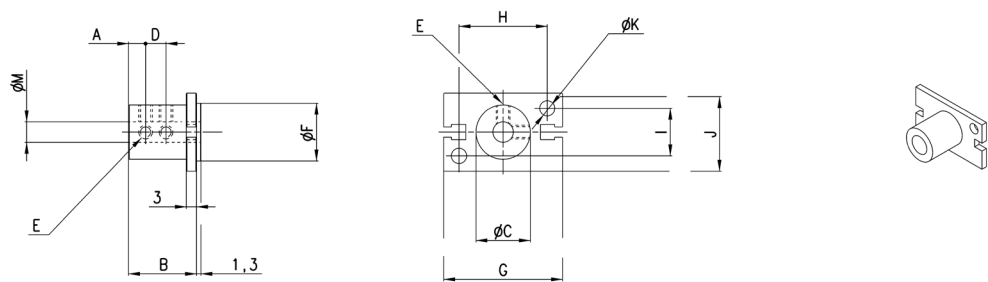
DIMENSIONS											
Mod.	X thread	X depth	Y thread	Y depth	W thread	W depth	Z thread	Z depth	AA thread	AA depth	
CGP-10	M3	7	M3	-	M3	5	M3	-	M3	5	
CGP-16	M4	11	M5	-	M4	7	M3	-	M4	7	
CGP-20	M5	13	M5	-	M4	8	M4	-	M5	8	
CGP-25	M6	14	M5	-	M6	10	M5	-	M6	10	
CGP-32	M6	20	M5	-	M6	10	M6	-	M6	10	

Mounting brackets Mod. L-CGP



Mod.	A	B	C	D	E	F	G	H	I	J	K
L-CGP-16	15	15	3	10	16	17	35	26	14	22	4,5
L-CGP-20	15	15	3	10	18	21	46	35	16	26	5,5
L-CGP-25	25	17	5	14	26	26	53	40	20	32	6,6
L-CGP-32	25	20	6	16	30	34	61	46	26	40	6,6

Mounting brackets Mod. C-CGP



Mod.	A	B	C	D	E	F	G	H	I	J	K	M
C-CGP-16	5	20,5	16	7	M4	17	35	26	14	23	4,5	6
C-CGP-20	7	25,5	20	9	M4	21	46	35	16	27	5,5	8
C-CGP-25	8	30,5	25	10	M4	26	53	40	20	33	6,6	10
C-CGP-32	10	40,5	32	15	M4	34	61	46	26	41	6,6	12