

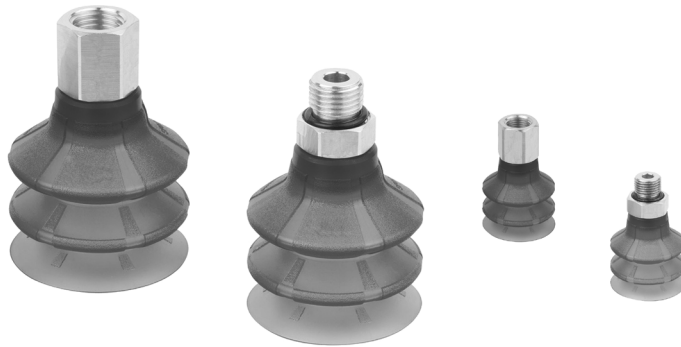
# Bellows suction pads (round) for Packaging

## Series VPCM - 2,5 folds



Suction pads in Elastodur ED-65.

Diameters from 20 to 50 mm with thread size G1/8 and G1/4, both male and female.



- » Elastodur ED-65 guarantees a high resistance to wear, tripling the service life compared to NBR.
- » Reduced cycle times thanks to high suction rates.
- » High rigidity and stability even during strong accelerations or emergency stops.
- » Optimum hold on cardboard and rigid packaging thanks to the adaptable sealing lip.
- » Optimum adaptability to curved and uneven surfaces.

Series VPCM suction pads consist of a nipple and rubber part which are delivered assembled. Both components can be ordered separately as spare parts.

These suction pads are very suitable for the handling of packagings like rigid (empty or filled) cardboard boxes and trays.

Common applications are:

- Palletising and de-palletising processes
- Heavy-duty applications in terms of hold and wear.
- Loading from the top and from the side in cartoning machines.
- Applications in which a high compensation in height is needed between the workpieces to handle.

### GENERAL DATA

<b>Description</b>	robust hard-wearing suction pads consisting of suction pad VPCM and connection nipple
<b>Construction</b>	- nipples and suction pads are supplied already assembled - diameters of 60 mm and more: nipple screwed into supporting plate vulcanised to the pad
<b>Maintenance</b>	it is possible to replace the soft element
<b>Working temperature</b>	ELASTODUR version: -40°C ÷ +100°C (for short time <30 sec.); -25°C ÷ +80°C (long-term)

**TECHNICAL DATA**

SERIES VPCM BELLOWS SUCTION PADS

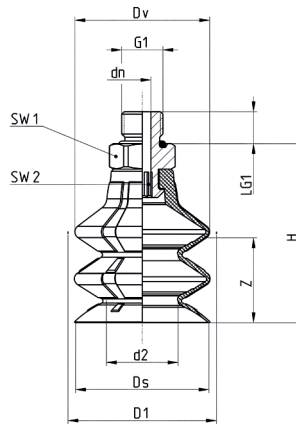
Mod./Diameter	Suction force (N)*	Int. volume (cm <sup>3</sup> )	Min. convex curvature radius (mm)	Internal tube diameter (mm)
<b>VPCM-0200</b>	6,8	4,2	20	4
<b>VPCM-0250</b>	9,9	7,6	20	4
<b>VPCM-0300</b>	14,4	12,4	30	6
<b>VPCM-0400</b>	24,8	27,9	60	6
<b>VPCM-0500</b>	34,6	51,8	75	6

**CODING EXAMPLE**

<b>VP</b>	<b>C</b>	<b>M</b>	<b>-</b>	<b>0200</b>	<b>E</b>	<b>-</b>	<b>G1/8</b>	<b>M</b>
-----------	----------	----------	----------	-------------	----------	----------	-------------	----------

<b>VP</b>	SERIES VP = suction pad
<b>C</b>	SHAPE C = round
<b>M</b>	VERSION M = 1,5 folds
<b>0200</b>	DIAMETERS 0200 = 20,0 mm 0250 = 25,0 mm 0300 = 30,0 mm 0400 = 40,0 mm 0500 = 50,0 mm
<b>E</b>	MATERIALS E = elastodur
<b>G1/8</b>	THREAD SIZE 1/8 = G1/8 1/4 = G1/4
<b>M</b>	THREAD M = male F = female

### Suction pad VPCM-0200 to 0500 - male thread

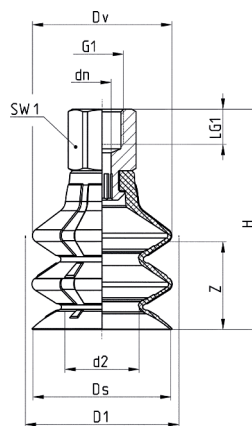


Tolerances for elastomer parts according to DIN ISO 3302-1 E3



Mod.	d2	dn	D1	Ds	G1	H	LG1	SW1	SW2	Z	Suction pad	Nipple
VPCM-0200E-1/8M	12,0	4,0	23,5	21,4	G1/8 M	32	7,5	14	4	13	VPCM-0200E	NPS-G-1/8-M
VPCM-0250E-1/8M	14,5	4,0	28,0	26,4	G1/8 M	37	7,5	14	4	17	VPCM-0250E	NPS-G-1/8-M
VPCM-0300E-1/8M	16,9	4,0	32,2	34,0	G1/8 M	43	7,5	14	4	20	VPCM-0300E	NPS-G-1/8-M
VPCM-0400E-1/4M	22,9	6,1	44,5	41,3	G1/4 M	53	10,0	17	6	25	VPCM-0400E	NPS-A-1/4-M
VPCM-0500E-1/4M	27,1	6,1	55,5	51,3	G1/4 M	64	10,0	17	6	32	VPCM-0500E	NPS-A-1/4-M

### Suction pad VPCM-0200 to 0500 - female thread



Tolerances for elastomer parts according to DIN ISO 3302-1 E3



Mod.	d2	dn	D1	Ds	G1	H	LG1	SW1	SW2	Z	Suction pad	Nipple
VPCM-0200E-1/8F	12,0	4,0	23,5	21,4	G1/8 F	40	8,0	14	4	13	VPCM-0200E	NPS-G-1/8-F
VPCM-0250E-1/8F	14,5	4,0	28,0	26,4	G1/8 F	45	8,0	14	4	17	VPCM-0250E	NPS-G-1/8-F
VPCM-0300E-1/8F	16,9	4,0	34,0	31,4	G1/8 F	51	8,0	14	4	20	VPCM-0300E	NPS-G-1/8-F
VPCM-0400E-1/4F	22,9	6,1	44,5	41,3	G1/4 F	63	12,0	17	6	25	VPCM-0400E	NPS-A-1/4-F
VPCM-0500E-1/4F	27,1	6,1	55,5	51,3	G1/4 F	74	12,0	17	6	32	VPCM-0500E	NPS-A-1/4-F