

Series TC pressure microregulators

New

For applications with oxygen, without relieving
Ports: cartridge construction, G1/8 and 1/8 NPTF



- » Compact design
- » High performance
- » Easy to install
- » Materials suitable with several gases

The new Series TC pressure regulator has been designed to be used for all the applications and equipment where it is needed to insert the single component in customized integrated pneumatic circuits (manifolds) or collectors.

The cartridge design and the compact size allow the regulator to be plugged in a proper seat, making the installation easier and reducing the assembly time. To produce the new TC regulator, materials have been analyzed and chosen on the basis of their suitability with the contact medium. The body in PPS and the seals in FKM ensure thus full compatibility with a wide range of gaseous fluids.

GENERAL DATA

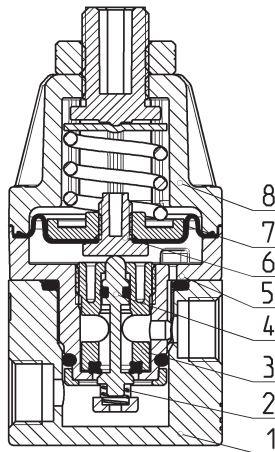
Construction	compact with pre-formed diaphragm
Materials	see the TABLE OF MATERIALS
Ports	cartridge construction in manifold - G1/8 or 1/8NPTF (aluminium body version only)
Mounting	in-line or cartridge (any position)
Operating temperature	-5°C + 50°C
Inlet pressure	0 + 10 bar
Outlet pressure	0 + 0.5 bar 0 + 2 bar 0 + 3 bar 0 + 4 bar
Overpressure exhaust	without relieving
Nominal flow	see the FLOW DIAGRAMS
Medium	air, inert and medical gases, OXYGEN
Repeatability	±0.2% FS

CODING EXAMPLE

TC | **1** | **-** | **R** | **3** | **1** | **-** | **C** | **-** | **V** | **-** | **OX2**

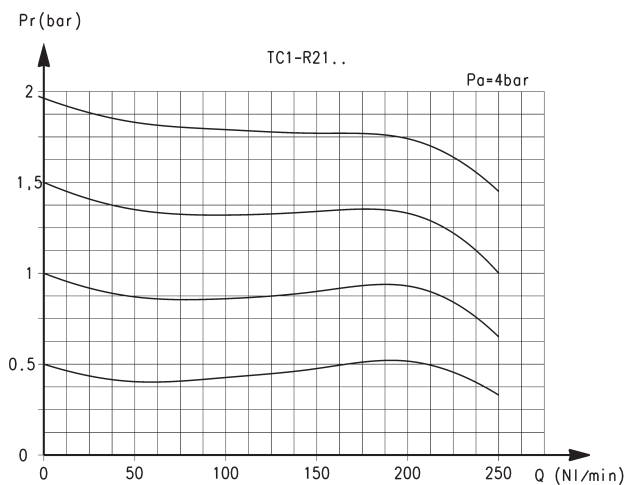
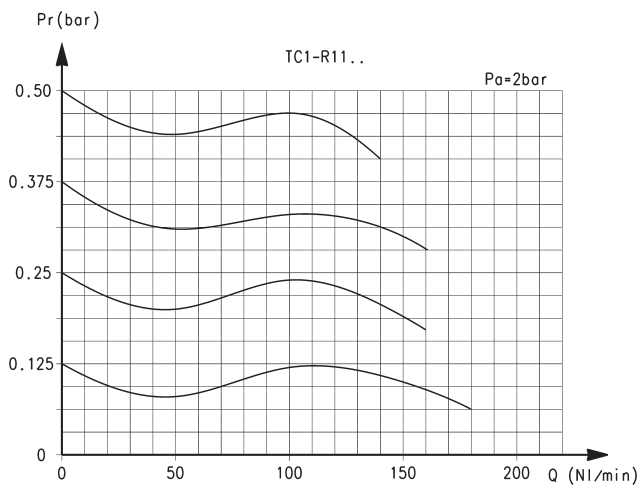
TC	SERIES
1	SIZE
R	REGULATOR
3	WORKING PRESSURE: 1 = 0 ÷ 0.5 bar 2 = 0 ÷ 2 bar 3 = 0 ÷ 3 bar 4 = 0 ÷ 4 bar
1	TYPE OF CONSTRUCTION: 1 = without relieving
C	PORTS: C = Cartridge 1/8 = G1/8 1/8TF = 1/8NPTF
V	SEALS MATERIAL: V = FKM
OX2	VERSIONS: OX1 = for oxygen (non-volatile residue lower than 550 mg/m ³) OX2 = for oxygen (non-volatile residue lower than 33 mg/m ³)

Series TC pressure microregulators - materials



PARTS	MATERIALS
1. Base body	Anodized aluminium
2. Lower spring	Stainless steel
3. Insert	PPS
4. Poppet	Stainless steel
5. Body	PPS
6. Valve guide	PPS
7. Diaphragm	FKM
8. Bell	Polyamide
Seals	FKM

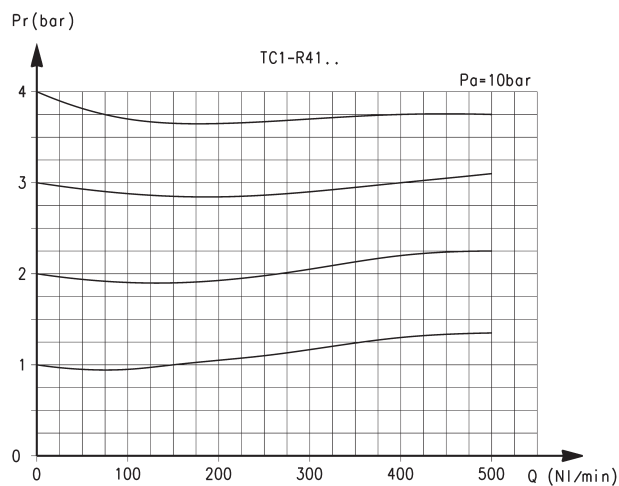
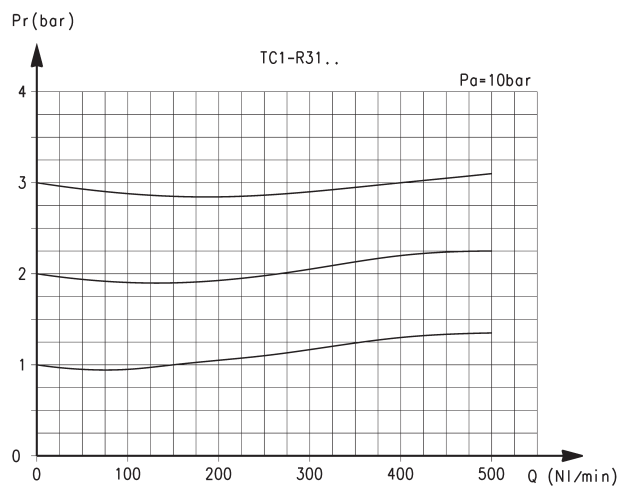
FLOW DIAGRAMS - 0.5 and 2 bar working pressure



Pr = Regulated pressure
Q = Flow
Pa = Inlet pressure

Pr = Regulated pressure
Q = Flow
Pa = Inlet pressure

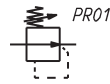
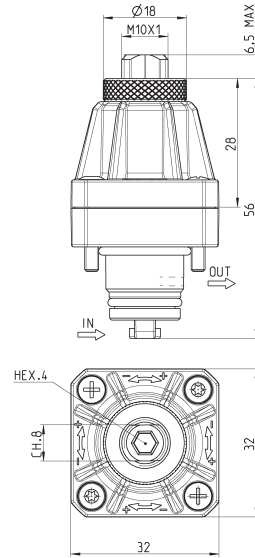
FLOW DIAGRAMS - 3 and 4 bar working pressure



Pr = Regulated pressure
Q = Flow
Pa = Inlet pressure

Pr = Regulated pressure
Q = Flow
Pa = Inlet pressure

Series TC cartridge pressure microregulators



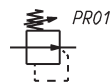
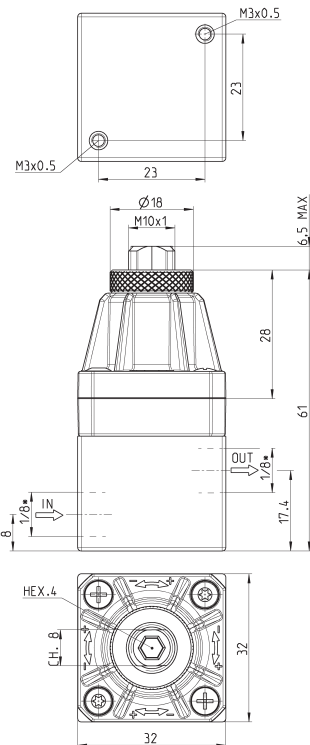
PR01 = regulator without relieving

Mod.

- TC1-R11-C-V-OX1
- TC1-R11-C-V-OX2
- TC1-R21-C-V-OX1
- TC1-R21-C-V-OX2
- TC1-R31-C-V-OX1
- TC1-R31-C-V-OX2
- TC1-R41-C-V-OX1
- TC1-R41-C-V-OX2

Series TC pressure microregulators with aluminium body

* to choose the type of thread (G1/8 or 1/8 NPTF)
see the Coding example



PR01 = regulator without relieving

Mod.

- TC1-R11-*-V-OX1
- TC1-R11-*-V-OX2
- TC1-R21-*-V-OX1
- TC1-R21-*-V-OX2
- TC1-R31-*-V-OX1
- TC1-R31-*-V-OX2
- TC1-R41-*-V-OX1
- TC1-R41-*-V-OX2

Seat dimensions for cartridge version

