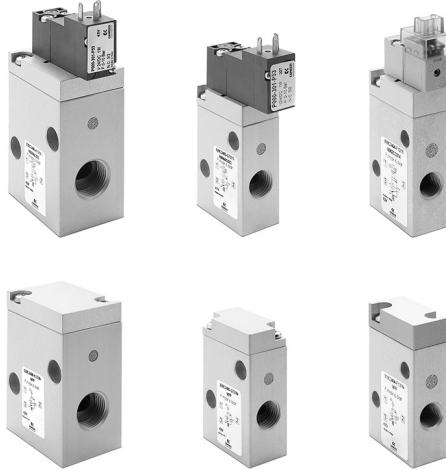


Series 8 pneumatically and electropneumatically operated valves

2/2-way - Normally Closed (NC)

3/2-way - Normally Closed (NC)



- » High flow
- » Available in 3 different sizes for general purpose
- » Version for use with oxygen available

The Series 8 enlarges the range of versions available with the cartridge valve directly integrated in an anodized aluminium body comprising also the pilot solenoid valve. The new bodies enable to have pneumatically operated versions with external piloting or electropneumatically operated versions with both external and internal piloting.

GENERAL DATA

TECHNICAL SPECIFICATIONS

Function	2/2 NC - 3/2 NC
Operation	pneumatic or electropneumatic
Pneumatic connections	G1/8 - G1/4 - G3/8
Nominal diameter	5 ... 9 mm
Flow coefficient kv (l/min)	6.5 ... 23
Nominal flow	420 ... 1480 Nl/min (air at 6 bar ΔP 1 bar)
Operating pressure	3 ÷ 6 bar (0 ÷ 6 bar with external pilot supply)
External pilot pressure	3 ÷ 6 bar
Operating temperature	0 ÷ 50 °C
Fluid	filtered air class 5.4.4 according to ISO 8573-1 (oil viscosity max. 32 cSt), inert gases
Response times	ON <10 ms - OFF <10 ms
Installation	any position

MATERIALS IN CONTACT WITH FLUID

Body	aluminium
Seals	FKM
Internal parts	aluminium - brass

ELECTRICAL SPECIFICATIONS

Voltage	24 V DC - other voltages on demand
Voltage tolerance	Size 1 = $\pm 10\%$ - Size 2 and 3 = $-10\% + 15\%$
Power consumption	Size 1 = 1.3 W (inrush) 0.25 W (holding) - Size 2 and 3 = 2 W
Duty cycle	ED 100%
Electrical connection	connectors - 300 mm flying leads
Protection class	Size 1 = IP50 - Size 2 and 3 = IP65 (with connector)

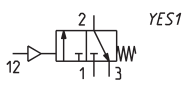
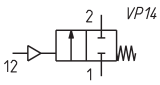
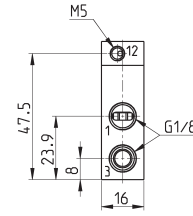
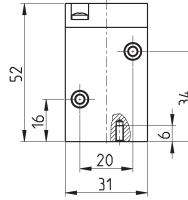
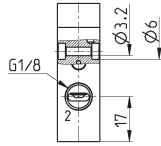
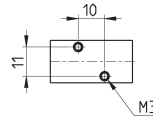
CODING EXAMPLE

8	10	C3	4	04	-	F1	3	1	Y	-	N	00	2C	C014
----------	-----------	-----------	----------	-----------	----------	-----------	----------	----------	----------	----------	----------	-----------	-----------	-------------

8	SERIES
10	SIZE 10 = size 1 20 = size 2 30 = size 3
C3	TYPE OF BODY C3 = valve with aluminium body threaded connections
4	NUMBER OF WAYS - FUNCTIONS 1 = 2/2-way - NC 4 = 3/2-way - NC
04	PNEUMATIC CONNECTIONS 04 = G1/8 (size 1) 05 = G1/4 (size 2) 06 = G3/8 (size 3)
F1	ORIFICE DIAMETER F1 = 5.0 mm (size 1) G7 = 6.6 mm (size 2) K1 = 9.0 mm (size 3)
3	SEAL MATERIAL 3 = FKM
1	BODY MATERIAL 1 = aluminium
Y	MANUAL OVERRIDE N = not provided Y = provided monostable
N	MOUNTING ACCESSORIES N = not provided
00	OPTIONS 00 = no option PP = pneumatic piloting PE = electropilot with external piloting
2C	ELECTRICAL CONNECTION 2C = KN 90° type + protection + led - only for size 1 2F = KN in line type + protection + led - only for size 1 3A = DIN EN 175 301-803-C (8 mm) - only for size 2 and 3 4A = industrial standard (9.4 mm) - only for size 2 and 3 7A = 300 mm flying leads - only for size 2 and 3
C014	VOLTAGE - POWER CONSUMPTION C012 = 12V DC - 1.3/0.25W (size 1) C014 = 24V DC - 1.3/0.25W (size 1) C020 = 12V DC - 2W (size 2 - 3) C023 = 24V DC - 2W (size 2 - 3) C025 = 48V DC - 2W (size 2 - 3)
	VERSION = standard OX1 = for use with oxygen (non volatile residual less than 550 mg/m ²) OX2 = for use with oxygen (non volatile residual less than 33 mg/m ²)

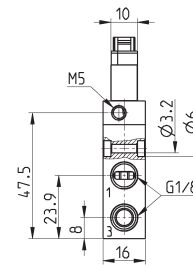
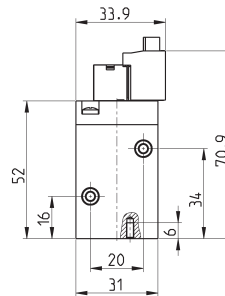
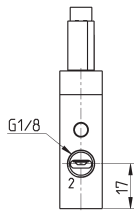
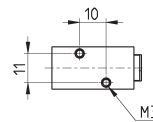
SERIES 8 PNEUMATICALLY AND ELECTROPNEUMATICALLY OPERATED VALVES

Series 8 pneumatic valve - size 1 - 2/2 and 3/2-ways NC

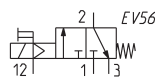
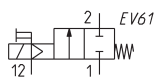
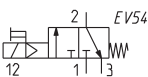
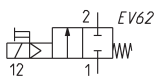


Mod.	Function	Ports	Orifice Ø (mm)	kv (L/min)	Qn (NL/min)	Min= max pressure (bar)	Min= max pilot pressure (bar)	Pilot supply	Symbol
810C3104-F131N-NPP	2/2 NC	G1/8	5.0	6.5	420	0 ÷ 6	3 ÷ 6	External	VP14
810C3404-F131N-NPP	3/2 NC	G1/8	5.0	6.5	420	0 ÷ 6	3 ÷ 6	External	YES1

Series 8 solenoid valve - size 1 - 2/2 and 3/2-ways NC

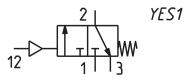
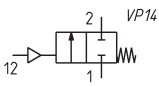
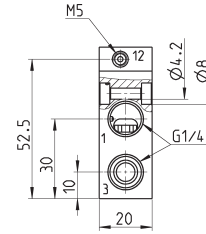
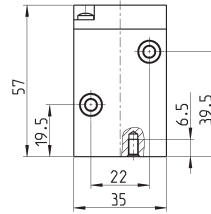
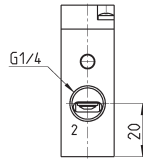
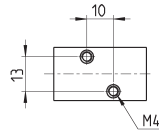


* add
- ELECTRICAL CONNECTION
- VOLTAGE
(see CODING EXAMPLE)



Mod.	Function	Ports	Orifice Ø (mm)	kv (L/min)	Qn (NL/min)	Min= max pressure (bar)	Min= max pilot pressure (bar)	Pilot supply	Symbol
810C3104-F131Y-N00*	2/2 NC	G1/8	5.0	6.5	420	3 ÷ 6	-	Internal	EV62
810C3404-F131Y-N00*	3/2 NC	G1/8	5.0	6.5	420	3 ÷ 6	-	Internal	EV54
810C3104-F131Y-NPE*	2/2 NC	G1/8	5.0	6.5	420	0 ÷ 6	3 ÷ 6	External	EV61
810C3404-F131Y-NPE*	3/2 NC	G1/8	5.0	6.5	420	0 ÷ 6	3 ÷ 6	External	EV56

Series 8 pneumatic valve - size 2 - 2/2 and 3/2-ways NC

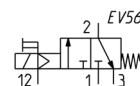
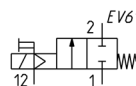
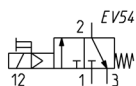
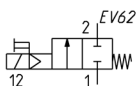
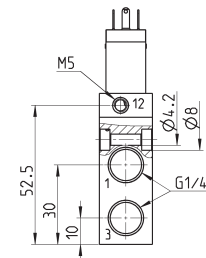
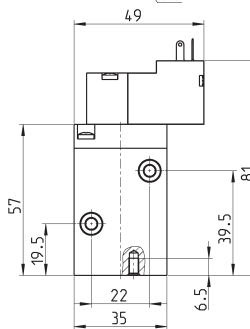
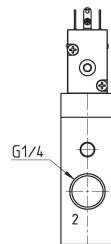
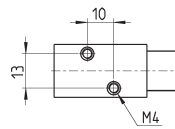


Mod.	Function	Ports	Orifice Ø (mm)	kv (l/min)	Qn (Nl/min)	Min+max pressure (bar)	Min+max pilot pressure (bar)	Pilot supply	Symbol
820C3105-G731N-NPP	2/2 NC	G1/4	6.6	12.5	800	0 ÷ 6	3 ÷ 6	External	VP14
820C3405-G731N-NPP	3/2 NC	G1/4	6.6	12.5	800	0 ÷ 6	3 ÷ 6	External	YES1

Series 8 solenoid valve - size 2 - 2/2 and 3/2-ways NC

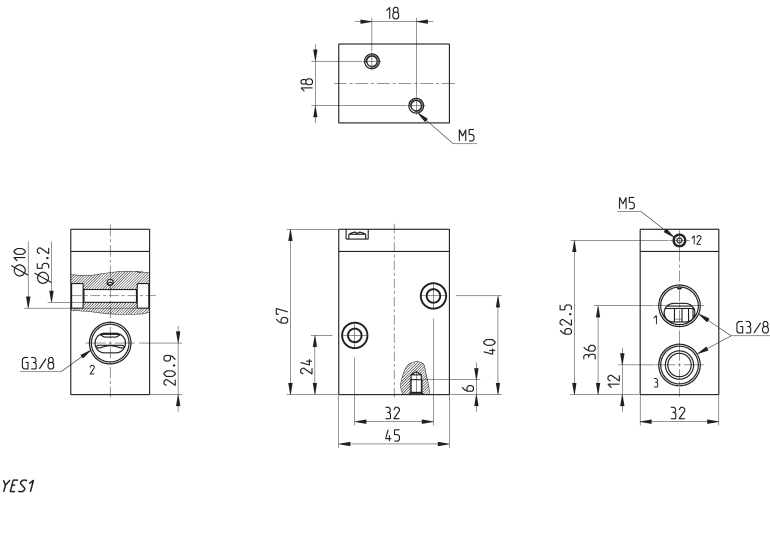


* add
- ELECTRICAL CONNECTION
- VOLTAGE
(see CODING EXAMPLE)



Mod.	Function	Ports	Orifice Ø (mm)	kv (l/min)	Qn (Nl/min)	Min+max pressure (bar)	Min+max pilot pressure (bar)	Pilot supply	Symbol
820C3105-G731Y-N00*	2/2 NC	G1/4	6.6	12.5	800	3 ÷ 6	-	Internal	EV62
820C3405-G731Y-N00*	3/2 NC	G1/4	6.6	12.5	800	3 ÷ 6	-	Internal	EV54
820C3105-G731Y-NPE*	2/2 NC	G1/4	6.6	12.5	800	0 ÷ 6	3 ÷ 6	External	EV61
820C3405-G731Y-NPE*	3/2 NC	G1/4	6.6	12.5	800	0 ÷ 6	3 ÷ 6	External	EV56

Series 8 pneumatic valve - size 3 - 2/2 and 3/2-ways NC

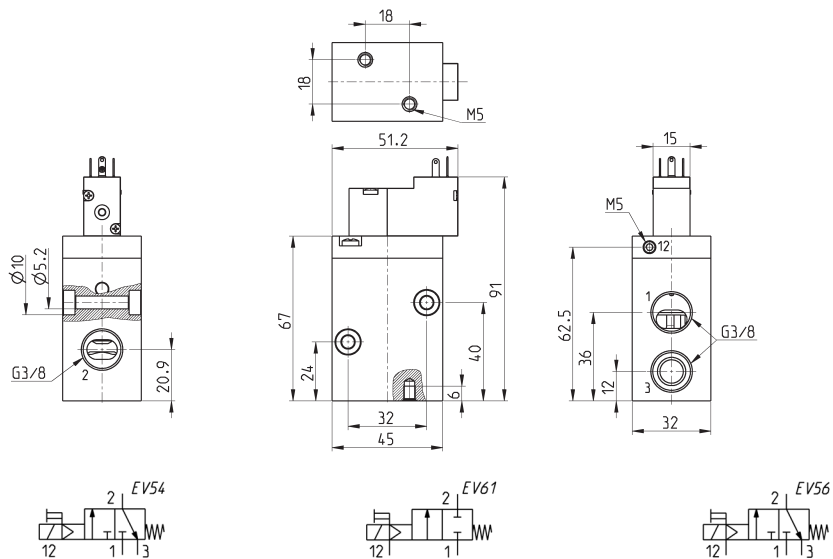


Mod.	Function	Ports	Orifice \varnothing (mm)	kv (l/min)	Qn (Nl/min)	Min+max pressure (bar)	Min+max pilot pressure (bar)	Pilot supply	Symbol
830C3106-K131N-NPP	2/2 NC	G3/8	9.0	23	1480	0 ÷ 6	3 ÷ 6	External	VP14
830C3406-K131N-NPP	3/2 NC	G3/8	9.0	23	1480	0 ÷ 6	3 ÷ 6	External	YES1

Series 8 solenoid valve - size 3 - 2/2 and 3/2-ways NC



* add
- ELECTRICAL CONNECTION
- VOLTAGE
(see CODING EXAMPLE)



Mod.	Function	Ports	Orifice \varnothing (mm)	kv (l/min)	Qn (Nl/min)	Min+max pressure (bar)	Min+max pilot pressure (bar)	Pilot supply	Symbol
830C3106-K131Y-N00*	2/2 NC	G3/8	9.0	23	1480	3 ÷ 6	-	Internal	EV62
830C3406-K131Y-N00*	3/2 NC	G3/8	9.0	23	1480	3 ÷ 6	-	Internal	EV54
830C3106-K131Y-NPE*	2/2 NC	G3/8	9.0	23	1480	0 ÷ 6	3 ÷ 6	External	EV61
830C3406-K131Y-NPE*	3/2 NC	G3/8	9.0	23	1480	0 ÷ 6	3 ÷ 6	External	EV56