

# Series N pressure regulators

Ports G1/8, G1/4



- » Knob with closure
- » Integral return exhaust (relieving)

Series N pressure regulators are available with G1/4 and G1/8 ports. Their design incorporates a self relieving diaphragm so as to allow decremental adjustments.

## GENERAL DATA

<b>Construction</b>	diaphragm type
<b>Materials</b>	brass, technopolymer, NBR
<b>Ports</b>	G1/8 - G1/4
<b>Weight</b>	Kg 0.316
<b>Pressure gauge ports</b>	G1/8
<b>Mounting</b>	in - line or console (in any position)
<b>Operating temperature</b>	-5°C ÷ 50°C (with the dew point of the fluid lower than 2°C at the min. working temperature)
<b>Inlet pressure</b>	0 ÷ 16 bar
<b>Outlet pressure</b>	0.5 ÷ 10 bar(standard), 0.5 ÷ 2 bar; 0.5 ÷ 4 bar e 0.5 ÷ 7 bar
<b>Nominal flow</b>	see FLOW DIAGRAMS on the following pages
<b>Secondary pressure relieving</b>	with relieving (standard) without relieving
<b>Fluid</b>	compressed air

**CODING EXAMPLE**

<b>N</b>	<b>12</b>	<b>04</b>	<b>-</b>	<b>R</b>	<b>T</b>	<b>0</b>	<b>-</b>	<b>■</b>	<b>-</b>	<b>●</b>
----------	-----------	-----------	----------	----------	----------	----------	----------	----------	----------	----------

<b>N</b>	SERIES
<b>12</b>	SIZE: 12
<b>04</b>	PORTS: 08 = G1/8 04 = G1/4
<b>R</b>	R = REGULATOR
<b>T</b>	OPERATING PRESSURE: 0 = 0.5 ÷ 10 bar (standard) 1 = 0.5 ÷ 4 bar 2 = 0.5 ÷ 2 bar 7 = 0.5 ÷ 7 bar T = calibrated* B = locked*
<b>0</b>	DESIGN TYPE: 0 = self-relieving 1 = non-relieving
<p>* NOTE: IF THE REGULATOR IS CALIBRATED OR LOCKED, AFTER THE DESIGN TYPE ADD THE INLET PRESSURE "■" AND THE OUTLET PRESSURE "●"</p> <p>INLET PRESSURE: ■ = enter the SUPPLY pressure value</p> <p>OUTLET PRESSURE: ● = enter the OUTLET pressure value for the LOCKED regulator or the maximum value of the ADJUSTABLE pressure for the CALIBRATED regulator</p> <p>Example of a calibrated regulator with Inlet Pressure = 6.3 bar and Outlet Pressure = 4.5 bar Complete part number: N1204-RT0-6.3-4.5</p>	

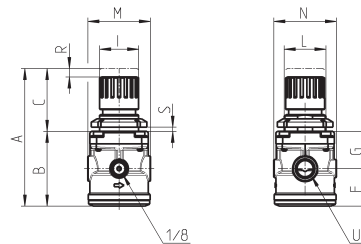
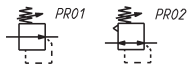
SERIES N PRESSURE REGULATORS

**Pressure regulators Series N**



Calibrated or blocked regulators on request

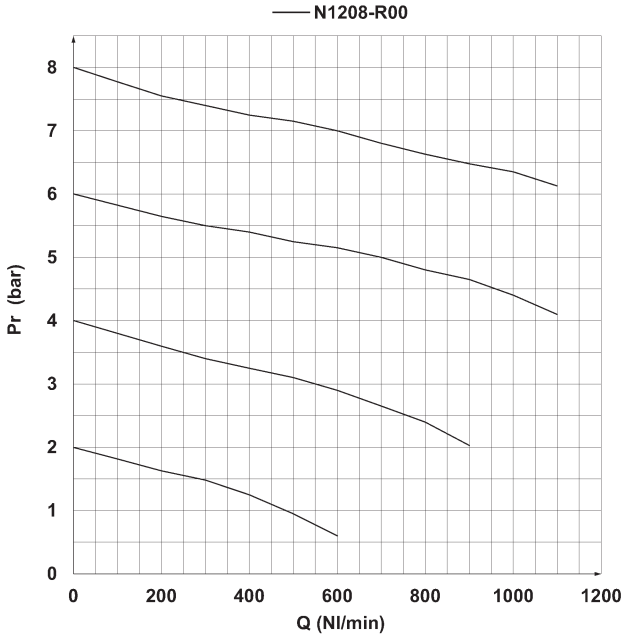
PR01 = regulator without relieving  
PR02 = regulator with relieving



DIMENSIONS												
Mod.	A	B	C	F	G	I	L	M	N	R	S	U
N1208-R00	92	53	39	26	27	28	30X1,5	45	45	3	0+6	G1/8
N1204-R00	92	53	39	26	27	28	30X1,5	45	45	3	0+6	G1/4

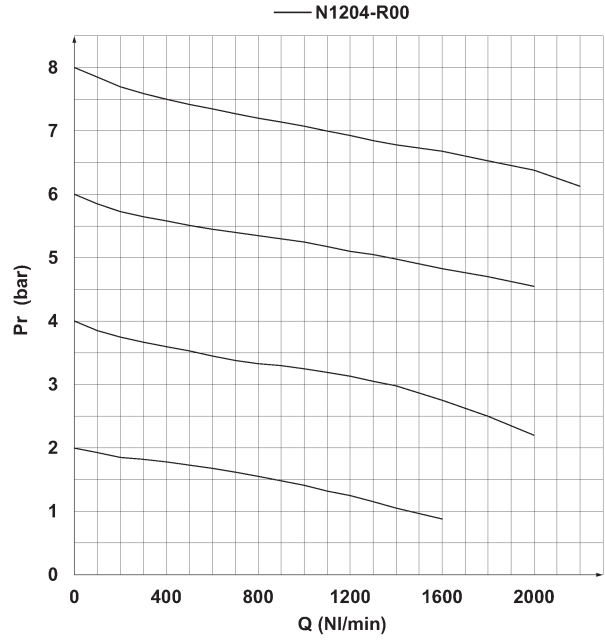
**FLOW DIAGRAMS**

SERIES N PRESSURE REGULATORS



Flow diagram for model: N1208-R00

Pa = Inlet pressure (bar)  
Pr = Regulated pressure (bar)  
Q = Flow (NL/min)



Flow diagram for model: N1204-R00

Pa = Inlet pressure (bar)  
Pr = Regulated pressure (bar)  
Q = Flow (NL/min)