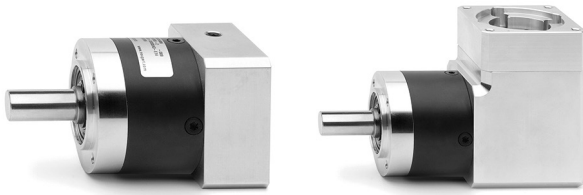


GB 系列行星减速器

规格 40, 60, 80, 120

GB 系列行星减速器



GB 系列行星减速器通过内置行星减速机构，可在运动传递时，减小角速度和提高输出力矩，可用于康茂胜的 5E、5V 和 6E 系列电缸。

GB 系列有四种规格，提供四种减速比。有两种形式可供选择，直线型和正交型。所有形式均配有相应的法兰，与 MTB 系列和 MTS 系列电机配套使用。

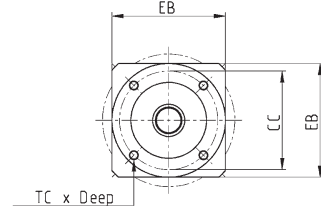
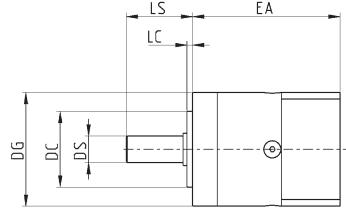
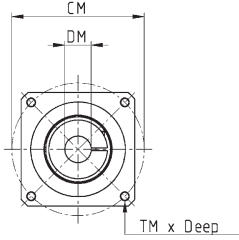
- » 减速机构
- » 用于连接 MTB 系列和 MTS 系列电机
- » 高性能
- » 4 种减速比 ($i = 3, 5, 7, 10$)
- » 运行时噪音低
- » 任意位置安装
- » 永久自润滑
- » 直线型和正交型可选

GB 系列行星减速器产品代号

GB	-	040	-	03	-	D	-	0100
-----------	----------	------------	----------	-----------	----------	----------	----------	-------------

GB	减速器
040	规格 040 = Ø40 060 = Ø60 080 = Ø80 120 = Ø120
03	减速比 (i) 03 = 3 05 = 5 07 = 7 10 = 10
D	类型 D = 直线型 A = 正交型
0100	电机类型 0100 = 无刷电机 100W (仅规格 040) 0400 = 无刷电机 400W (仅规格 060) 0750 = 无刷电机 750W (仅规格 080) 1000 = 无刷电机 1000W (仅规格 120) 0024 = Nema 24

直线型行星减速器

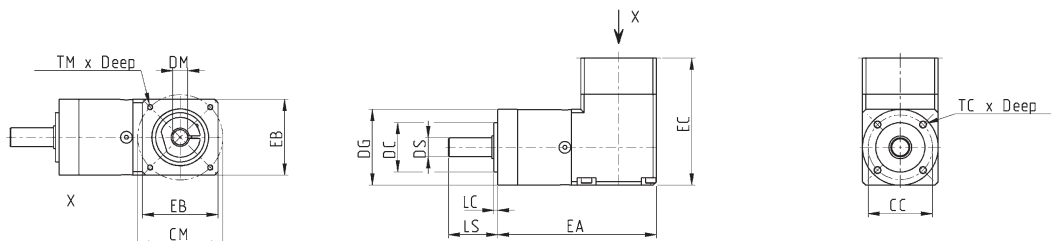


尺寸表

型号	反向游隙	$\phi_{DS}^{(h7)}$	LS	$\phi_{DC}^{(h7)}$	LC	ϕ_{CC}	TC x Deep	EA	EB	ϕ_{DG}	ϕ_{DM}	ϕ_{CM}	TM x Deep	质量 (kg)
GB-040-03-D-0100	<15'	10	26	26	2	34	M4 x 6	67.5	40	40	8	45	M3 x 8	0.35
GB-040-05-D-0100	<15'	10	26	26	2	34	M4 x 6	67.5	40	40	8	45	M3 x 8	0.35
GB-040-07-D-0100	<15'	10	26	26	2	34	M4 x 6	67.5	40	40	8	45	M3 x 8	0.35
GB-040-10-D-0100	<15'	10	26	26	2	34	M4 x 6	67.5	40	40	8	45	M3 x 8	0.35
GB-040-03-D-0024	<15'	10	26	26	2	34	M4 x 6	63.5	60	40	8	66.7	M4 x 10	0.35
GB-040-05-D-0024	<15'	10	26	26	2	34	M4 x 6	63.5	60	40	8	66.7	M4 x 10	0.35
GB-040-07-D-0024	<15'	10	26	26	2	34	M4 x 6	63.5	60	40	8	66.7	M4 x 10	0.35
GB-040-10-D-0024	<15'	10	26	26	2	34	M4 x 6	63.5	60	40	8	66.7	M4 x 10	0.35
GB-060-03-D-0400	<10'	14	35	40	3	52	M5 x 8	78	60	60	14	70	M5 x 12	0.9
GB-060-05-D-0400	<10'	14	35	40	3	52	M5 x 8	78	60	60	14	70	M5 x 12	0.9
GB-060-07-D-0400	<10'	14	35	40	3	52	M5 x 8	78	60	60	14	70	M5 x 12	0.9
GB-060-10-D-0400	<10'	14	35	40	3	52	M5 x 8	78	60	60	14	70	M5 x 12	0.9
GB-060-03-D-0024	<10'	14	35	40	3	52	M5 x 8	71	60	60	8	66.7	M4 x 10	0.9
GB-060-05-D-0024	<10'	14	35	40	3	52	M5 x 8	71	60	60	8	66.7	M4 x 10	0.9
GB-060-07-D-0024	<10'	14	35	40	3	52	M5 x 8	71	60	60	8	66.7	M4 x 10	0.9
GB-060-10-D-0024	<10'	14	35	40	3	52	M5 x 8	71	60	60	8	66.7	M4 x 10	0.9
GB-080-03-D-0750	<7'	20	40	60	3	70	M6 x 10	103.5	80	80	19	90	M6 x 15	2.1
GB-080-05-D-0750	<7'	20	40	60	3	70	M6 x 10	103.5	80	80	19	90	M6 x 15	2.1
GB-080-07-D-0750	<7'	20	40	60	3	70	M6 x 10	103.5	80	80	19	90	M6 x 15	2.1
GB-080-10-D-0750	<7'	20	40	60	3	70	M6 x 10	103.5	80	80	19	90	M6 x 15	2.1
GB-080-03-D-0024	<7'	20	40	60	3	70	M6 x 10	93.5	80	80	8	66.7	M4 x 10	2.1
GB-080-05-D-0024	<7'	20	40	60	3	70	M6 x 10	93.5	80	80	8	66.7	M4 x 10	2.1
GB-080-07-D-0024	<7'	20	40	60	3	70	M6 x 10	93.5	80	80	8	66.7	M4 x 10	2.1
GB-080-10-D-0024	<7'	20	40	60	3	70	M6 x 10	93.5	80	80	8	66.7	M4 x 10	2.1
GB-120-03-D-1000	<7'	25	55	80	4	100	M10 x 16	136.5	130	115	24	145	M8 x 18	6
GB-120-05-D-1000	<7'	25	55	80	4	100	M10 x 16	136.5	130	115	24	145	M8 x 18	6
GB-120-07-D-1000	<7'	25	55	80	4	100	M10 x 16	136.5	130	115	24	145	M8 x 18	6
GB-120-10-D-1000	<7'	25	55	80	4	100	M10 x 16	136.5	130	115	24	145	M8 x 18	6

GB 系列行星减速器

正交型行星减速器



尺寸表

型号	反向游隙	$\phi_{DS}^{(h7)}$	LS	$\phi_{DC}^{(h7)}$	LC	ϕ_{CC}	TC x Deep	EA	EB	EC	ϕ_{DG}	ϕ_{DM}	ϕ_{CM}	TM x Deep	质量 (kg)
GB-040-03-A-0100	<21'	10	26	26	2	34	M4 x 6	84	40	67	40	8	45	M3 x 7	0.51
GB-040-05-A-0100	<21'	10	26	26	2	34	M4 x 6	84	40	67	40	8	45	M3 x 7	0.51
GB-040-07-A-0100	<21'	10	26	26	2	34	M4 x 6	84	40	67	40	8	45	M3 x 7	0.51
GB-040-10-A-0100	<21'	10	26	26	2	34	M4 x 6	84	40	67	40	8	45	M3 x 7	0.51
GB-040-03-A-0024	<21'	10	26	26	2	34	M4 x 6	84	60	63	40	8	66.7	M4 x 7	0.51
GB-040-05-A-0024	<21'	10	26	26	2	34	M4 x 6	84	60	63	40	8	66.7	M4 x 7	0.51
GB-040-07-A-0024	<21'	10	26	26	2	34	M4 x 6	84	60	63	40	8	66.7	M4 x 7	0.51
GB-040-10-A-0024	<21'	10	26	26	2	34	M4 x 6	84	60	63	40	8	66.7	M4 x 7	0.51
GB-060-03-A-0400	<16'	14	35	40	3	52	M5 x 8	112	60	92.5	60	14	70	M5 x 12	1.7
GB-060-05-A-0400	<16'	14	35	40	3	52	M5 x 8	112	60	92.5	60	14	70	M5 x 12	1.7
GB-060-07-A-0400	<16'	14	35	40	3	52	M5 x 8	112	60	92.5	60	14	70	M5 x 12	1.7
GB-060-10-A-0400	<16'	14	35	40	3	52	M5 x 8	112	60	92.5	60	14	70	M5 x 12	1.7
GB-060-03-A-0024	<16'	14	35	40	3	52	M5 x 8	71	60	85.5	60	8	66.7	M4 x 10	1.7
GB-060-05-A-0024	<16'	14	35	40	3	52	M5 x 8	71	60	85.5	60	8	66.7	M4 x 10	1.7
GB-060-07-A-0024	<16'	14	35	40	3	52	M5 x 8	71	60	85.5	60	8	66.7	M4 x 10	1.7
GB-060-10-A-0024	<16'	14	35	40	3	52	M5 x 8	71	60	85.5	60	8	66.7	M4 x 10	1.7
GB-080-03-A-0750	<13'	20	40	60	3	70	M6 x 10	144	80	119.5	80	19	90	M6 x 15	4.4
GB-080-05-A-0750	<13'	20	40	60	3	70	M6 x 10	144	80	119.5	80	19	90	M6 x 15	4.4
GB-080-07-A-0750	<13'	20	40	60	3	70	M6 x 10	144	80	119.5	80	19	90	M6 x 15	4.4
GB-080-10-A-0750	<13'	20	40	60	3	70	M6 x 10	144	80	119.5	80	19	90	M6 x 15	4.4
GB-080-03-A-0024	<13'	20	40	60	3	70	M6 x 10	144	80	109.5	80	8	66.7	M4 x 10	4.4
GB-080-05-A-0024	<13'	20	40	60	3	70	M6 x 10	144	80	109.5	80	8	66.7	M4 x 10	4.4
GB-080-07-A-0024	<13'	20	40	60	3	70	M6 x 10	144	80	109.5	80	8	66.7	M4 x 10	4.4
GB-080-10-A-0024	<13'	20	40	60	3	70	M6 x 10	144	80	109.5	80	8	66.7	M4 x 10	4.4
GB-120-03-A-1000	<11'	25	55	80	4	100	M10 x 16	194.5	130	160.5	115	24	145	M8 x 18	12
GB-120-05-A-1000	<11'	25	55	80	4	100	M10 x 16	194.5	130	160.5	115	24	145	M8 x 18	12
GB-120-07-A-1000	<11'	25	55	80	4	100	M10 x 16	194.5	130	160.5	115	24	145	M8 x 18	12
GB-120-10-A-1000	<11'	25	55	80	4	100	M10 x 16	194.5	130	160.5	115	24	145	M8 x 18	12