

New

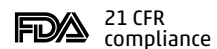
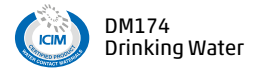
GRIPfit push-in fittings Series 7000 - Beverage and Water filtration

Tube external diameters: 4, 6, 8 mm
Fittings threads: ISO-228 BSPP (G1/8, G1/4, G3/8).

- » Bio-sourced materials (composite)
- » Low Lead Brass (CW510L)
- » Easy connection and disconnection



Series 7000 Beverage and Water filtration is a new range of push-in fittings made of reinforced bio-sourced technopolymer and low lead brass. Thanks to the materials and new connection technology, these fittings are ideal for beverage dispensing and water filtration systems.

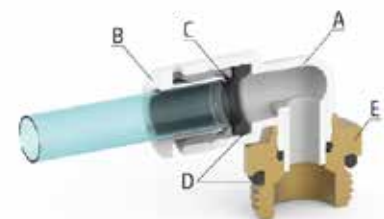


*Check the NSF certified models here:
<https://www.nsf.org/certified-products-systems>

** NSF169 and NSF61 currently available for brass straight fittings. Available for full range soon..

GENERAL DATA

Diameters	ø 4 mm - ø 6 mm - ø 8 mm
Maximum operating pressure	- 20° / + 40° 16 bar - 16 bar - 16 bar + 40° / + 70° 16 bar - 14 bar - 12 bar + 70° / + 100° 16 bar - 12 bar - 10 bar
Minimum operating pressure	-0,9 bar
Temperature	-20 ÷ +100 (See characteristics of tubes used)
Threads	GAS cylindrical ISO-228 BSPP
Connecting tube	Polyurethane (PU), Polyethylene (PE), Polyamide (PA), Fluoropolymer (PTFE), Polyester (HY3L), rigid metal pipe with smooth grooved metal end
Fluid	Drinking and mains water, beverages and gas (for other fluids consult our technicians)
Materials	(A) Body = Technopolymer (PA11), low lead brass (CW510L) (B) Button = Technopolymer (PA66) (C) Gripping ring = Stainless steel (AISI 301) (D) Seals = EPDM (E) Thread = Low lead brass (CW510L)



Fittings Mod. B6512

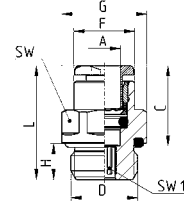
Male straight connector
Low lead brass (CW510L)
Thread BSPP ISO-228



NSF169



NSF61



Mod.	A	D	C	F	G	H	L	SW	SW1	Weight (g)
B6512 4-1/8	4	G1/8	14,6	8,8	13,5	6	20	12	2,5	8
B6512 4-1/4	4	G1/4	14,6	8,8	16,4	7	21,5	15	2,5	12
B6512 6-1/8	6	G1/8	15,5	11,7	13,5	6	21	12	4	8
B6512 6-1/4	6	G1/4	15,5	11,7	16,4	7	22	15	4	11
B6512 8-1/8	8	G1/8	17,3	13,7	15,2	6	26	14	5	12
B6512 8-1/4	8	G1/4	17,3	13,7	16,4	7	24,5	15	6	14
B6512 8-3/8	8	G3/8	17,3	13,7	20,5	7	24	19	7	24

Fittings Mod. B6812

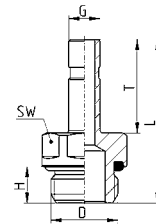
Male straight adaptor
Low lead brass (CW510L)
Thread BSPP ISO-228



NSF169



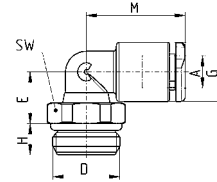
NSF61



Mod.	D	G	H	L	T	SW	Weight (g)
B6812 4-1/8	G1/8	4	6	29	16,5	12	9
B6812 4-1/4	G1/4	4	7	30	16,5	15	14
B6812 6-1/8	G1/8	6	6	30,5	18	12	10
B6812 6-1/4	G1/4	6	7	31,5	18	15	14,5
B6812 8-1/8	G1/8	8	6	33	20,5	12	12
B6812 8-1/4	G1/4	8	7	34	20,5	15	16,5
B6812 8-3/8	G3/8	8	7	36	20,5	19	26

Fittings Mod. B7522

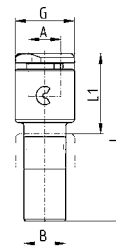
Swivel male elbow
Thread BSPP ISO-228



Mod.	A	D	E	G	H	M	SW	Weight (g)
B7522 4-1/8	4	G1/8	9	9,2	5	17	12	7
B7522 4-1/4	4	G1/4	9	9,2	6	17	14	10
B7522 6-1/8	6	G1/8	10	11,4	5	19	12	8
B7522 6-1/4	6	G1/4	10	11,4	6	19	14	11
B7522 8-1/8	8	G1/8	13,5	13,7	5	21,5	12	11
B7522 8-1/4	8	G1/4	12	13,7	6	21,5	14	14
B7522 8-3/8	8	G3/8	12	13,7	7	21,5	19	19

Fittings Mod. B7800

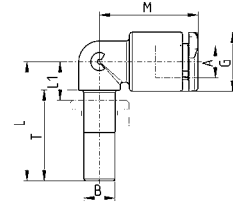
Reducer junction straight



Mod.	A	B	G	L	L1	Weight (g)
B7800 4-6	4	6	9,3	29,5	14	2
B7800 4-8	4	8	9,3	30,5	14	3
B7800 6-8	6	8	11,4	32,5	15,5	4

Fittings Mod. B7555

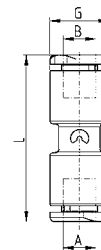
Equal junction elbow



Mod.	A	B	G	L	L1	M	T	Weight (g)
B7555 4-4	4	4	9,2	21	7	17	16,5	2
B7555 6-6	6	6	11,4	23	8	19	17,5	4
B7555 8-8	8	8	13,7	25	9	21,5	18,5	5

Fittings Mod. B7580

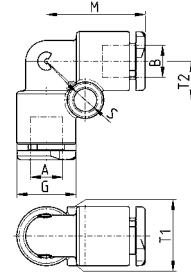
Equal intermediate straight



Mod.	A	B	G	L	Weight (g)
B7580 4	4	4	9,2	29,2	4
B7580 6	6	6	11,4	32	6
B7580 8	8	8	13,7	35,4	8

Fittings Mod. B7550

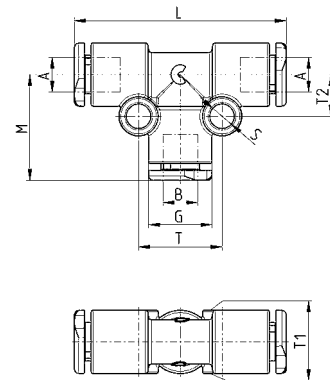
Equal intermediate elbow



Mod.	A	B	G	M	S	T1	T2	Weight (g)
B7550 4	4	4	9,2	17	4	9,2	6,5	4
B7550 6	6	6	11,4	19	4	11,4	7,5	6
B7550 8	8	8	13,7	21,5	4	13,7	8,5	9

Fittings Mod. B7540

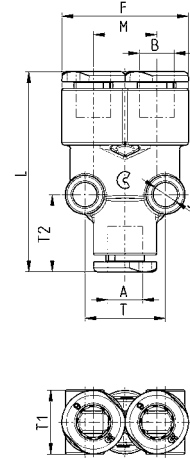
Equal intermediate tee



Mod.	A	B	G	L	M	S	T	T1	T2	Weight (g)
B7540 4	4	4	9,2	34	17	4	12	9,2	6,5	6
B7540 6	6	6	11,4	38	19	4	15	11,4	7,5	9
B7540 8	8	8	13,7	43	21,5	4	17	13,7	8,5	14

Fittings Mod. B7560

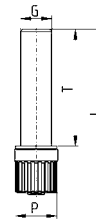
Equal intermediate Y



Mod.	A	B	F	L	M	S	T	T1	T2	Weight (g)
B7560 4	4	4	18,2	33,2	9	4	10,8	9,5	13	6
B7560 6	6	6	23	36	11,4	4	14,5	11,5	14	9
B7560 8	8	8	27,2	41,5	13,5	4	17	14	15	15

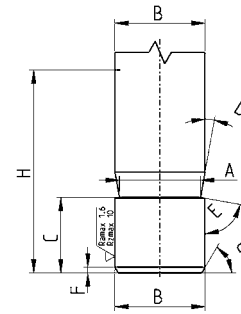
Accessory Mod. B6900

Plastic male plug



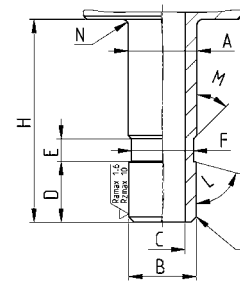
Mod.	G	L	P	T	Weight (g)
B6900 4	4	29	8	20	1
B6900 6	6	31,5	8	22,5	1
B6900 8	8	34,5	12	24,5	2

Groove for metal pipe made by Camozzi grooving tool 8TRT (or machining)



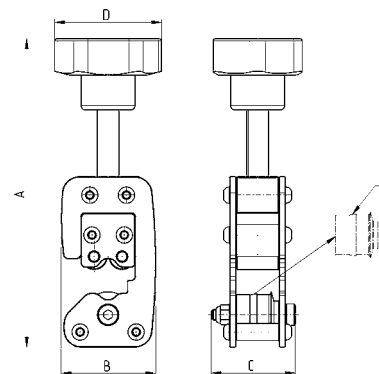
A	B	C	D	E	F	G	H
3,4	4	5,3	10°	80°	0,5	30°	16,5
5,2	6	6,25	10°	80°	0,5	30°	18
7,2	8	6,4	10°	80°	0,5	30°	20

Groove for metal pipe made by machining



A	B	C	D	E	F	G	H	L	M	N
4,1	4	2	5,3	2	3,5	0,5x45°	16,5	75°	45°	0,5
6,1	6	4	5,4	2	5,5	0,5x45°	18	75°	45°	0,5
8,1	8	6	6	2	7,5	0,5x45°	20,5	75°	45°	0,5

Grooving tool for metallic tubes



Mod.	Tube Ø	A (max)	B	C	D	Weight (g)	E (spare wheel)
8TRT 4	4	138	43.5	39	50	450	RTRT 4
8TRT 6	6	140	43.5	39	50	450	RTRT 6
8TRT 8	8	142	43.5	39	50	450	RTRT 8