

Racores super rápidos GRIPfit Serie 7000 - Refrigeración

Diámetros exteriores del tubo: 6, 8 mm
Roscas: ISO-228 BSPP (G1/8, G1/4, G3/8).

- » Resistente a la presión del agua y a la erosión
- » Estabilidad dimensional en contacto con el agua
- » Resistente a la corrosión

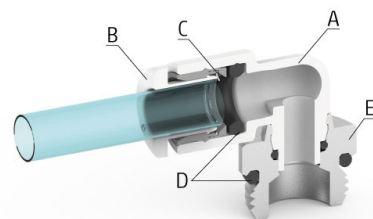


Los racores super rápidos Serie 7000 Refrigeración han sido diseñados con un tecnopolímero especial basado en materias primas renovables de origen biológico que permiten que el componente resista la absorción de agua, las variaciones de temperatura y los aditivos de refrigeración líquida.



GENERAL DATA

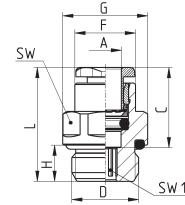
| | |
|---------------------------------------|---|
| Diámetros | ∅ 6 mm - ∅ 8 mm |
| Presión de trabajo máx. - 20° / + 40° | 16 bar - 16 bar |
| + 40° / + 70° | 14 bar - 12 bar |
| + 70° / + 100° | 12 bar - 10 bar |
| Presión de trabajo mín. | -0,9 bar |
| Temperatura | - 20 ÷ + 100 (ver las características de los tubos usados) |
| Roscas | Gas cilíndrica ISO-228 BSPP |
| Tubos de conexión | Poliuretano (PU), Polietileno (PE), Poliamida (PA), Fluoropolímero (PTFE), Poliéster (HY3L), tubo metálico rígido con extremo metálico ranurado liso |
| Fluidos | Agua industrial y fluidos refrigerantes (para otros fluidos consulte a nuestros técnicos) |
| Materiales | (A) Cuerpo = tecnopolímero (PA11), latón con niquelado químico (B) Boquilla = tecnopolímero (PA66) (C) Anillo de sujeción = acero inoxidable (AISI 301) (D) Juntas = EPDM (E) Rosca = latón con niquelado químico |



Racores Mod. W6512



Conector macho recto
Latón con niquelado químico
Rosca BSPP ISO-228

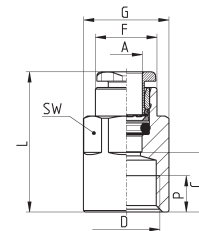


| Mod. | A | D | C | F | G | H | L | SW | SW1 | Peso (g) |
|-------------|---|------|------|------|------|---|------|----|-----|----------|
| W6512 6-1/8 | 6 | G1/8 | 15,5 | 11,7 | 13,5 | 6 | 21 | 12 | 4 | 8 |
| W6512 6-1/4 | 6 | G1/4 | 15,5 | 11,7 | 16,4 | 7 | 22 | 15 | 4 | 11 |
| W6512 8-1/8 | 8 | G1/8 | 17,3 | 13,7 | 15,2 | 6 | 26 | 14 | 5 | 12 |
| W6512 8-1/4 | 8 | G1/4 | 17,3 | 13,7 | 16,4 | 7 | 24,5 | 15 | 6 | 14 |
| W6512 8-3/8 | 8 | G3/8 | 17,3 | 13,7 | 20,5 | 7 | 24 | 19 | 7 | 24 |

Racores Mod. W6463



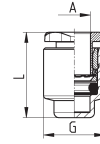
Conector hembra recto
Latón con niquelado químico
Rosca BSPP ISO-228



| Mod. | A | D | C | F | G | L | P(min) | SW | Peso (g) |
|-------------|---|------|------|------|------|------|--------|----|----------|
| W6463 6-1/8 | 6 | G1/8 | 10 | 11,7 | 13 | 25,5 | 6 | 12 | 13 |
| W6463 6-1/4 | 6 | G1/4 | 11,5 | 11,9 | 16,5 | 27 | 7 | 15 | 21,5 |
| W6463 8-1/8 | 8 | G1/8 | 9,5 | 13,7 | 15,2 | 27 | 6 | 14 | 13,5 |
| W6463 8-1/4 | 8 | G1/4 | 11,5 | 13,7 | 16,5 | 29 | 7 | 15 | 20,5 |
| W6463 8-3/8 | 8 | G3/8 | 12,5 | 13,7 | 20,5 | 30 | 8 | 19 | 25 |

Racores Mod. W6750

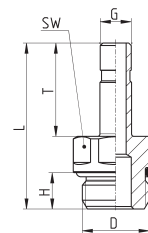
Tapón hembra
Latón con niquelado químico



| Mod. | A | G | L | Peso (g) |
|---------|---|------|------|----------|
| W6750 6 | 6 | 11,8 | 16,5 | 4,5 |
| W6750 8 | 8 | 13,8 | 18,3 | 5,5 |

Racores Mod. W6812

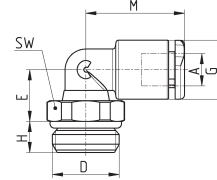
Adaptador recto macho
Latón con niquelado químico
Rosca BSPP ISO-228



| Mod. | D | G | H | L | T | SW | Peso (g) |
|-------------|------|---|---|------|------|----|----------|
| W6812 6-1/8 | G1/8 | 6 | 6 | 30 | 18 | 12 | 9 |
| W6812 6-1/4 | G1/4 | 6 | 7 | 32 | 18 | 15 | 17,4 |
| W6812 8-1/8 | G1/8 | 8 | 6 | 32,5 | 20,5 | 12 | 10,2 |
| W6812 8-1/4 | G1/4 | 8 | 7 | 34,5 | 20,5 | 15 | 17,4 |
| W6812 8-3/8 | G3/8 | 8 | 7 | 34,5 | 20,5 | 19 | 25 |

Racores Mod. W7522

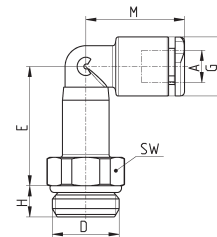
Codo giratorio macho
Rosca BSPP ISO-228



| Mod. | A | D | E | G | H | M | SW | Peso (g) |
|-------------|---|------|------|------|---|------|----|----------|
| W7522 6-1/8 | 6 | G1/8 | 10 | 11,4 | 5 | 19 | 12 | 8 |
| W7522 6-1/4 | 6 | G1/4 | 10 | 11,4 | 6 | 19 | 14 | 11 |
| W7522 8-1/8 | 8 | G1/8 | 13,5 | 13,7 | 5 | 21,5 | 12 | 11 |
| W7522 8-1/4 | 8 | G1/4 | 12 | 13,7 | 6 | 21,5 | 14 | 14 |
| W7522 8-3/8 | 8 | G3/8 | 12 | 13,7 | 7 | 21,5 | 19 | 19 |

Racores Mod. W7526

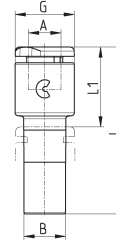
Codo largo macho giratorio
Rosca BSPP ISO-228



| Mod. | A | D | E | G | H | M | SW | Peso (g) |
|-------------|---|------|------|------|---|------|----|----------|
| W7526 6-1/8 | 6 | G1/8 | 23 | 11,4 | 5 | 19 | 12 | 13 |
| W7526 6-1/4 | 6 | G1/4 | 23 | 11,4 | 6 | 19 | 14 | 16 |
| W7526 8-1/8 | 8 | G1/8 | 29 | 13,7 | 5 | 21,5 | 12 | 18 |
| W7526 8-1/4 | 8 | G1/4 | 27 | 13,7 | 6 | 21,5 | 14 | 20 |
| W7526 8-3/8 | 8 | G3/8 | 27,5 | 13,7 | 7 | 21,5 | 19 | 24 |

Racores Mod. W7800

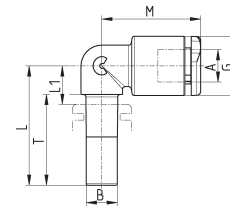
Unión reductora recta



| Mod. | A | B | G | L | L1 | Peso (g) |
|------------|---|----|------|------|------|----------|
| W7800 4-6 | 4 | 6 | 9,3 | 29,5 | 14 | 2 |
| W7800 4-8 | 4 | 8 | 9,3 | 30,5 | 14 | 3 |
| W7800 6-8 | 6 | 8 | 11,4 | 32,5 | 15,5 | 4 |
| W7800 6-10 | 6 | 10 | 11,4 | 34,5 | 15,5 | 4 |
| W7800 6-12 | 6 | 12 | 11,4 | 36,2 | 15,5 | 4 |
| W7800 8-10 | 8 | 10 | 13,7 | 36,2 | 17,2 | 5 |
| W7800 8-12 | 8 | 12 | 13,7 | 37,9 | 17,2 | 6 |

Racores Mod. W7555

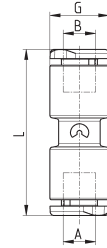
Codo unión



| Mod. | A | B | G | L | L1 | M | T | Peso (g) |
|-----------|---|---|------|----|----|------|------|----------|
| W7555 6-6 | 6 | 6 | 11,4 | 23 | 8 | 19 | 17,5 | 4 |
| W7555 8-8 | 8 | 8 | 13,7 | 25 | 9 | 21,5 | 18,5 | 5 |

Racores Mod. W7580

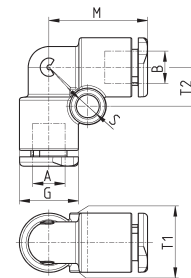
Unión recta



| Mod. | A | B | G | L | Peso (g) |
|---------|---|---|------|------|----------|
| W7580 6 | 6 | 6 | 11,4 | 31,5 | 6 |
| W7580 8 | 8 | 8 | 13,7 | 35,4 | 8 |

Racores Mod. W7550

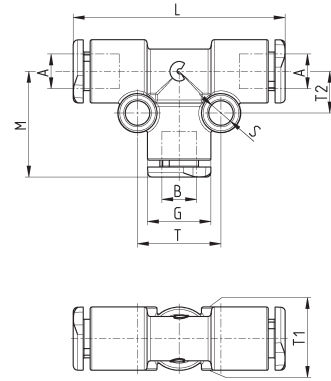
Codo unión



| Mod. | A | B | G | M | S | T1 | T2 | Peso (g) |
|---------|---|---|------|------|---|------|-----|----------|
| W7550 6 | 6 | 6 | 11,4 | 19 | 4 | 11,4 | 7,5 | 6 |
| W7550 8 | 8 | 8 | 13,7 | 21,5 | 4 | 13,7 | 8,5 | 9 |

Racores Mod. W7540

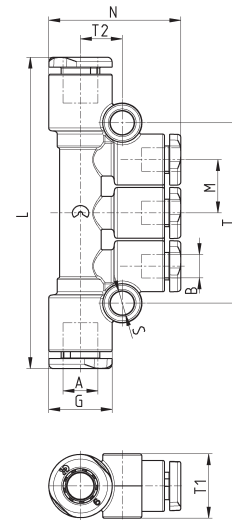
T unión



| Mod. | A | B | G | L | M | S | T | T1 | T2 | Peso (g) |
|---------|---|---|------|----|------|---|----|------|-----|----------|
| W7540 6 | 6 | 6 | 11,4 | 38 | 19 | 4 | 15 | 11,4 | 7,5 | 9 |
| W7540 8 | 8 | 8 | 13,7 | 43 | 21,5 | 4 | 17 | 13,7 | 8,5 | 14 |

Racores Mod. W7545

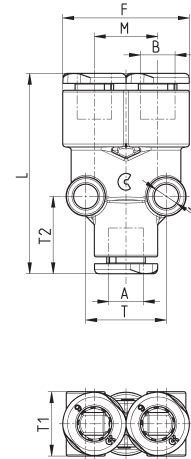
T reductor múltiple



| Mod. | A | B | G | L | M | N | S | T | T1 | T2 | Peso (g) |
|-----------|---|---|------|----|------|----|---|------|------|----|----------|
| W7545 8-6 | 8 | 6 | 13,7 | 66 | 11,5 | 27 | 4 | 38,2 | 13,7 | 9 | 18 |

Racores Mod. W7560

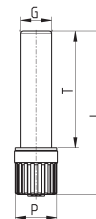
Yunión



| Mod. | A | B | F | L | M | S | T | T1 | T2 | Peso (g) |
|---------|---|---|------|------|------|---|------|------|----|----------|
| W7560 6 | 6 | 6 | 23 | 36 | 11,4 | 4 | 14,5 | 11,5 | 14 | 9 |
| W7560 8 | 8 | 8 | 27,2 | 41,5 | 13,5 | 4 | 17 | 14 | 15 | 15 |

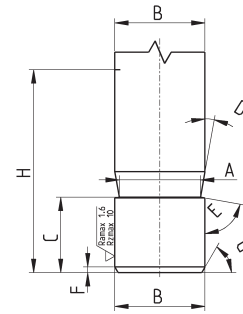
Accessory Mod. 6900

Tapón macho de plástico



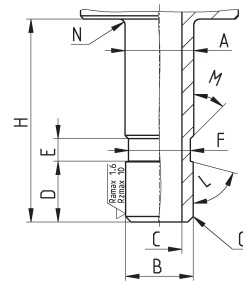
| Mod. | G | L | P | T | Peso (g) |
|---------|---|------|----|------|----------|
| B6900 6 | 6 | 31,5 | 8 | 22,5 | 1 |
| B6900 8 | 8 | 34,5 | 12 | 24,5 | 2 |

Ranura para tubo metálico realizada con la ranuradora Camozzi 8TRT (o mecanizado)



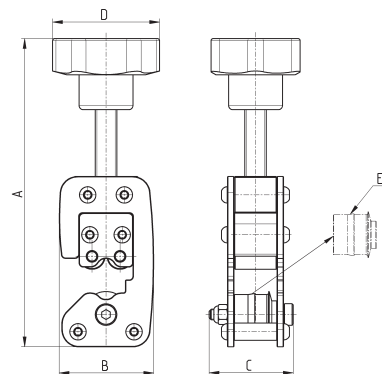
| A | B | C | D | E | F | G | H |
|-----|---|------|-----|-----|-----|-----|------|
| 3,4 | 4 | 5,3 | 10° | 80° | 0,5 | 30° | 16,5 |
| 5,2 | 6 | 6,25 | 10° | 80° | 0,5 | 30° | 18 |
| 7,2 | 8 | 6,4 | 10° | 80° | 0,5 | 30° | 20 |

Ranura para tubo metálico realizada por mecanizado



| A | B | C | D | E | F | G | H | L | M | N |
|-----|---|---|-----|---|-----|---------|------|-----|-----|-----|
| 4,1 | 4 | 2 | 5,3 | 2 | 3,5 | 0,5x45° | 16,5 | 75° | 45° | 0,5 |
| 6,1 | 6 | 4 | 5,4 | 2 | 5,5 | 0,5x45° | 18 | 75° | 45° | 0,5 |
| 8,1 | 8 | 6 | 6 | 2 | 7,5 | 0,5x45° | 20,5 | 75° | 45° | 0,5 |

Herramienta de ranurado para tubos metálicos



| Mod. | Tubo Ø | A (max) | B | C | D | Peso (g) | E (rueda de repuesto) |
|--------|--------|---------|------|----|----|----------|-----------------------|
| 8TRT 4 | 4 | 138 | 43.5 | 39 | 50 | 450 | RTRT 4 |
| 8TRT 6 | 6 | 140 | 43.5 | 39 | 50 | 450 | RTRT 6 |
| 8TRT 8 | 8 | 142 | 43.5 | 39 | 50 | 450 | RTRT 8 |