

# Series N pressure regulators

Ports G1/8, G1/4



- » Knob with closure
- » Integral return exhaust (relieving)

Series N pressure regulators are available with G1/4 and G1/8 ports. Their design incorporates a self relieving diaphragm so as to allow decremental adjustments.

## GENERAL DATA

|                                     |   |
|-------------------------------------|---|
| <b>Construction</b>                 | diaphragm type  |
| <b>Materials</b>                    | brass, technopolymer, NBR   |
| <b>Ports</b>                        | G1/8 - G1/4   |
| <b>Weight</b>                       | Kg 0.316  |
| <b>Pressure gauge ports</b>         | G1/8  |
| <b>Mounting</b>                     | in - line or console (in any position)  |
| <b>Operating temperature</b>        | 0 ÷ 10 bar / -5°C ÷ 50°C (with the dew point of the fluid lower than 2°C at the min. working temperature) |
| <b>Outlet pressure</b>              | 0.5 ÷ 10 bar(standard), 0.5 ÷ 2 bar; 0.5 ÷ 4 bar e 0.5 ÷ 7 bar  |
| <b>Nominal flow</b>                 | see FLOW DIAGRAMS on the following pages  |
| <b>Secondary pressure relieving</b> | with relieving (standard)<br>without relieving  |
| <b>Fluid</b>                        | compressed air  |

**CODING EXAMPLE**

|   |    |    |   |   |   |   |   |   |   |   |
|---|----|----|---|---|---|---|---|---|---|---|
| N | 12 | 04 | - | R | T | 0 | - | ■ | - | ● |
|---|----|----|---|---|---|---|---|---|---|---|

|   |   |
|---|---|
| <b>N</b>  | SERIES  |
| <b>12</b>   | SIZE:<br>12   |
| <b>04</b>   | PORTS:<br>08 = G1/8<br>04 = G1/4  |
| <b>R</b>  | R = REGULATOR   |
| <b>T</b>  | OPERATING PRESSURE:<br>0 = 0.5 ÷ 10 bar (standard)<br>1 = 0.5 ÷ 4 bar<br>2 = 0.5 ÷ 2 bar<br>7 = 0.5 ÷ 7 bar<br>T = calibrated*<br>B = locked* |
| <b>0</b>  | DESIGN TYPE:<br>0 = self-relieving<br>1 = non-relieving   |
| <p>* NOTE: IF THE REGULATOR IS CALIBRATED OR LOCKED, AFTER THE DESIGN TYPE ADD THE INLET PRESSURE "■" AND THE OUTLET PRESSURE "●"</p> <p>INLET PRESSURE:<br/>■ = enter the SUPPLY pressure value</p> <p>OUTLET PRESSURE:<br/>● = enter the OUTLET pressure value for the LOCKED regulator or the maximum value of the ADJUSTABLE pressure for the CALIBRATED regulator</p> <p>Example of a calibrated regulator with Inlet Pressure = 6.3 bar and Outlet Pressure = 4.5 bar<br/>Complete part number: N1204-RT0-6.3-4.5</p> |   |

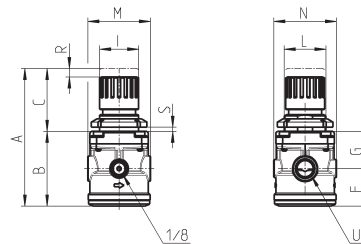
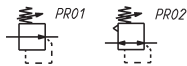
SERIES N PRESSURE REGULATORS

**Pressure regulators Series N**



Calibrated or blocked regulators on request

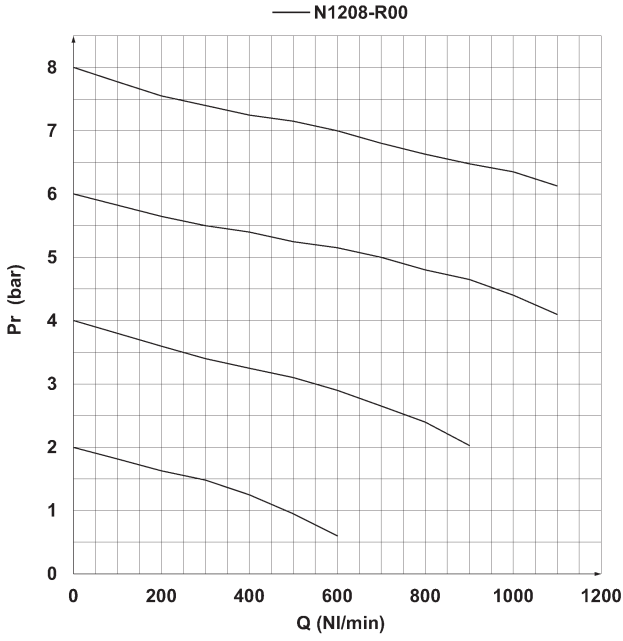
PR01 = regulator without relieving  
PR02 = regulator with relieving



| DIMENSIONS |    |    |    |    |    |    |        |    |    |   |     |      |
|------------|----|----|----|----|----|----|--------|----|----|---|-----|------|
| Mod.       | A  | B  | C  | F  | G  | I  | L      | M  | N  | R | S   | U    |
| N1208-R00  | 92 | 53 | 39 | 26 | 27 | 28 | 30X1,5 | 45 | 45 | 3 | 0+6 | G1/8 |
| N1204-R00  | 92 | 53 | 39 | 26 | 27 | 28 | 30X1,5 | 45 | 45 | 3 | 0+6 | G1/4 |

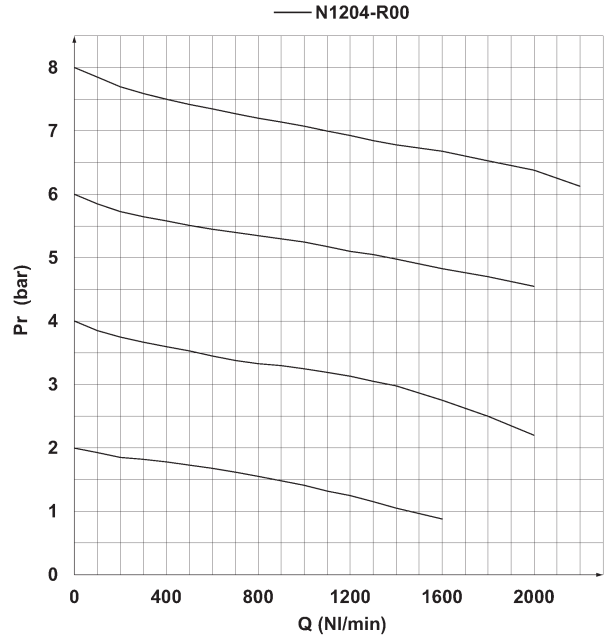
**FLOW DIAGRAMS**

SERIES N PRESSURE REGULATORS



Flow diagram for model: N1208-R00

Pa = Inlet pressure (bar)  
Pr = Regulated pressure (bar)  
Q = Flow (NL/min)



Flow diagram for model: N1204-R00

Pa = Inlet pressure (bar)  
Pr = Regulated pressure (bar)  
Q = Flow (NL/min)