

Flexible suction pad mountings Series NPF

The vulcanisation provides flexibility in all directions.
Thread G1/4

SERIES NPF SUCTION PAD MOUNTINGS



- » Flexible in all directions for optimal adaption to the workpiece (up to 12°)
- » Low pivoting point which reduces the wear on the suction pad.
- » Rubber covered (vulcanised) metal connection for heavy loads.

Series NPF flexible suction pad mounting allows a better adaption between the suction pad and the workpiece due to its flexibility in all directions.

Applications:

- Suitable for use in conjunction with larger flat suction pads on bigger workpieces which are either inclined or have a tendency to sag during the lifting operation or simply have a slightly irregular shape.
- They can be used in combination with spring plungers for further compensation in height if needed.

GENERAL DATA

Description	Flexible suction pad mounting
Materials	- Steel body - Vulcanised rubber connection

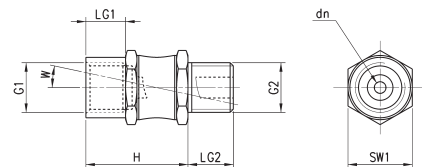
CODING EXAMPLE

NPF	-	FM	-	1/4	-	M10 X 1,25
NPF	SERIES NPF = Flexible suction pad mountings					
FM	THREAD VERSION FM = G1 Female / G2 Male					
1/4	FEMALE THREAD G1 1/4 = G1/4					
M10x1,25	MALE THREAD G2 M10x1,25 = M10x1,25 1/4 = G1/4					

Flexible suction pad mountings Series NPF



- * G1 = Female thread (F)
- ** G2 = Male thread (M)



DIMENSIONS												
Mod.	dn	G1 *	G2 **	H	LG1	LG2	SW1	W(°)	Vertical load (N)	Bending moment (Nm)	Weight (g)	
NPF-FM-1/4-M10X1,25	2,8	G1/4 F	M10X1,25 M	27	10,5	8	17	12	500	8	26	
NPF-FM-1/4-1/4	3	G1/4 F	G1/4 M	27	12	12	17	12	750	10	30	