

SPRUE GRIPPERS

SERIES RPGA

ANGULAR, NOT SELF-CENTERING, SINGLE-ACTING, NORMALLY OPEN
 MODELS AVAILABLE: FLAT FINGER, CURVED FINGER, SHORT FINGER,
 FLAT FINGER WITH SENSOR SLOT, CURVED FINGER WITH SENSOR SLOT



Thanks to a piston with a size of 20mm and to the direct transfer of the force from the piston to the fingers, Series RPGA guarantees a strong and a safe grip.

Their technical features ensure a high gripping force and make these grippers particularly suitable in the removal of injection molded items. The surface treatments on each metallic part make this series very wear resistant.

D and E models are provided with a finger having a slot for the installation of an inductive sensor.

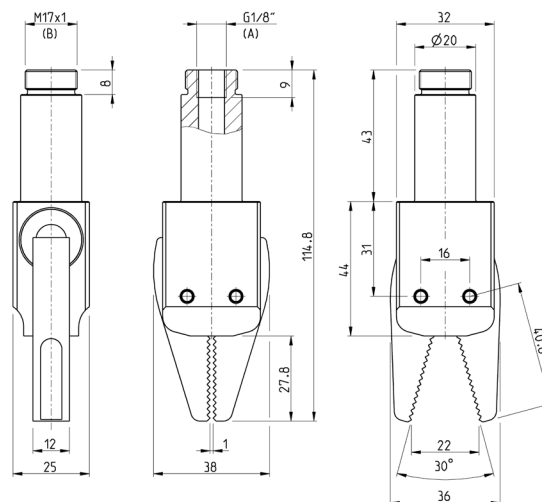
GENERAL DATA

| | |
|----------------------------------|--|
| Operation | Single-acting, normally open |
| Materials | Anodized aluminium body and fingers, PU seals |
| Working pressure | 2,5 bar ÷ 8 bar |
| Working temperature | 0°C ÷ 60°C |
| Max frequency | 2,5 Hz |
| Lubrication | Not necessary |
| Ports | G1/8 |
| Fluid | Filtered air, without lubrication |
| Size | 20 mm |
| Weights | 120 g (models A and B); 125 g (models C, D, E) |
| Gripping torque at 6 bar | 310 Ncm |
| Opening torque at 6 bar | 25 Ncm |
| Gripping force at 6 bar | 90 N |
| Closing time without load | 20 ms |
| Opening time | 75 ms |

CODING EXAMPLE

| | | | | |
|-------------|----------|-----------|----------|----------|
| RPGA | - | 20 | - | A |
|-------------|----------|-----------|----------|----------|

| | |
|-------------|--|
| RPGA | SERIES |
| 20 | SIZE 20 |
| A | TYPE OF CONSTRUCTION A = Flat finger B = Curved finger C = Short finger with mounting holes for extensions D = Flat finger for sensor E = Curved finger for sensor |

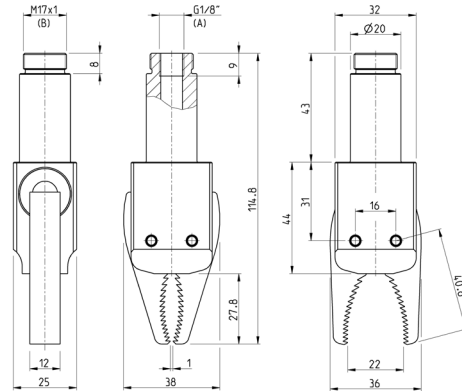
Flat finger gripper Mod. RPGA-20-A


A = connection port
B = fixing thread

| |
|-------------|
| Mod. |
| RPGA-20-A |

SPRUE GRIPPERS
SERIES RPGA - DIMENSIONAL CHARACTERISTICS

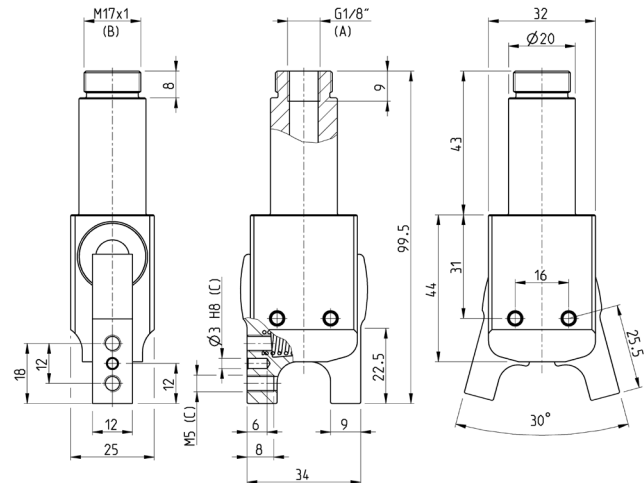
Curved finger gripper Mod. RPGA-20-B



A = connection port
 B = fixing thread

| |
|-------------|
| Mod. |
| RPGA-20-B |

Short finger gripper Mod. RPGA-20-C

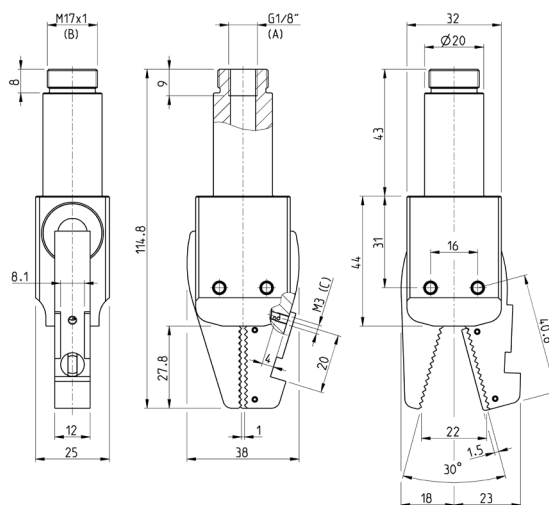


A = connection port
 B = fixing thread
 C = fixing holes

| |
|-------------|
| Mod. |
| RPGA-20-C |

SPRUE GRIPPERS
SERIES RPGA - DIMENSIONAL CHARACTERISTICS
Flat finger gripper with sensor slot Mod. RPGA-20-D


The sensor is not supplied with the gripper



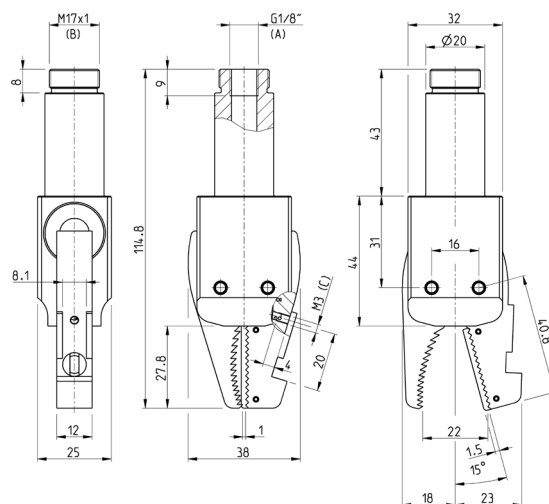
A = connection port
 B = fixing thread
 C = sensor fixing hole

Mod.

RPGA-20-D

Curved finger gripper with sensor slot Mod. RPGA-20-E


The sensor is not supplied with the gripper



A = connection port
 B = fixing thread
 C = sensor fixing hole

Mod.

RPGA-20-E