

# SPRUE GRIPPERS

## SERIES RPGB

ANGULAR, NOT SELF-CENTERING, SINGLE-ACTING, NORMALLY OPEN  
 MODELS: FLAT FINGER, SHORT FINGER, FLAT FINGER WITH SENSOR  
 SIZE 8, 12 MM



- Suitable for plastic injection molding sector
- Easy to install
- Compact and lightweight
- Wear resistant
- Models RPGB-08-D and RPGB12-D are supplied with sensor CSD-D-364 already mounted

The external design, the choice of materials and the search for miniaturization makes Series RPGB a compact and lightweight solution. The D model is provided with a finger having a slot for the installation of a magnetic sensor which is able to detect the grip of the piece.

Its technical features ensure a high gripping force and make this gripper particularly suitable in the removal of injection molded items. The surface treatments on each metallic part make this series very wear resistant.

### GENERAL DATA

<b>Operation</b>	Single-acting, normally open
<b>Materials</b>	Anodized aluminium body and fingers, HNBR seals
<b>Working pressure</b>	2.5 bar ÷ 8 bar
<b>Working temperature</b>	0°C ÷ 60°C
<b>Max frequency</b>	3 Hz
<b>Lubrication</b>	Not necessary
<b>Ports</b>	M5
<b>Fluid</b>	Filtered air, class 6.8.4 according to ISO 8573-1, without lubrication
<b>Size</b>	8, 12 mm
<b>Weights</b>	15 g (size 8) - 50 g (size 12)
<b>Gripping torque at 6 bar</b>	25 Ncm (size 8) - 90 Ncm (size 12)
<b>Opening torque at 6 bar</b>	2 Ncm (size 8) - 5 Ncm (size 12)
<b>Gripping force at 6 bar</b>	7 N (size 8) - 30 N (size 12)
<b>Closing time without load</b>	10 ms
<b>Opening time</b>	30 ms

**SPRUE GRIPPERS**  
**SERIES RPGB - CODING EXAMPLE**
**CODING EXAMPLE**

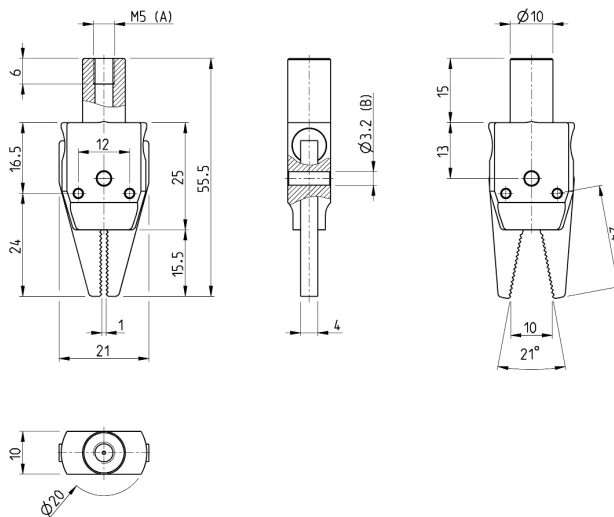
<b>RPGB</b>	<b>-</b>	<b>12</b>	<b>-</b>	<b>A</b>
<b>RPGB</b>	<b>SERIES</b>			
<b>12</b>	<b>SIZE</b> 08 12			
<b>A</b>	<b>TYPE OF CONSTRUCTION</b> A = Flat finger C = Short finger with mounting holes for extensions D = Flat finger with sensor mounted (CSD-D-364)			

GRIPPERS

3

**Flat finger gripper Mod. RPGB-08-A**


<b>Mod.</b>
RPGB-08-A



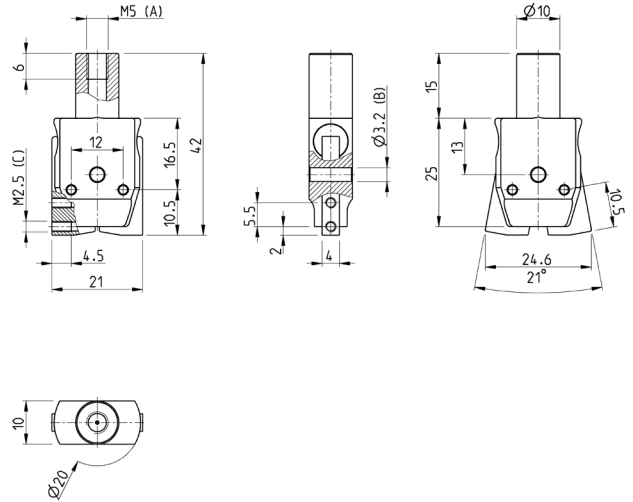
A = port connection  
 B = mounting hole

SPRUE GRIPPERS  
**SERIES RPGB - DIMENSIONAL CHARACTERISTICS**

**Short finger gripper Mod. RPGB-08-C**



Mod.  
**RPGB-08-C**



A = port connection  
 B = mounting hole  
 C = mounting thread

GRIPPERS

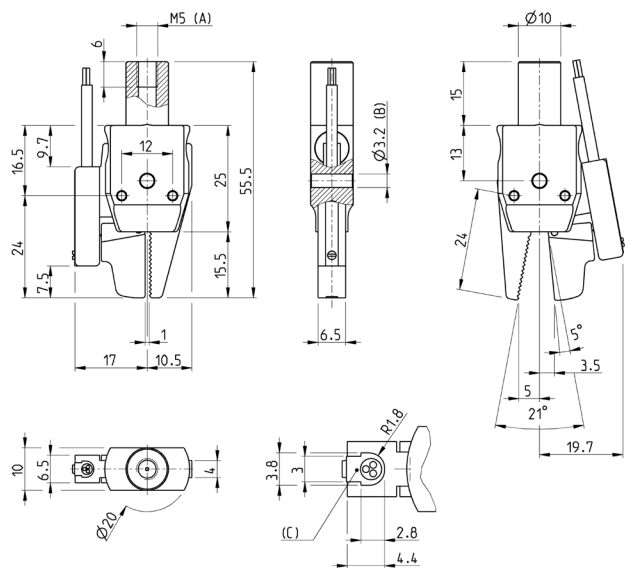
3

**Flat finger gripper with sensor slot Mod. RPGB-08-D**

This model is supplied with sensor CSD-D-364 mounted.



Mod.  
**RPGB-08-D**



A = connection port  
 B = mounting hole  
 C = sensor groove

SPRUE GRIPPERS  
**SERIES RPGB - DIMENSIONAL CHARACTERISTICS**

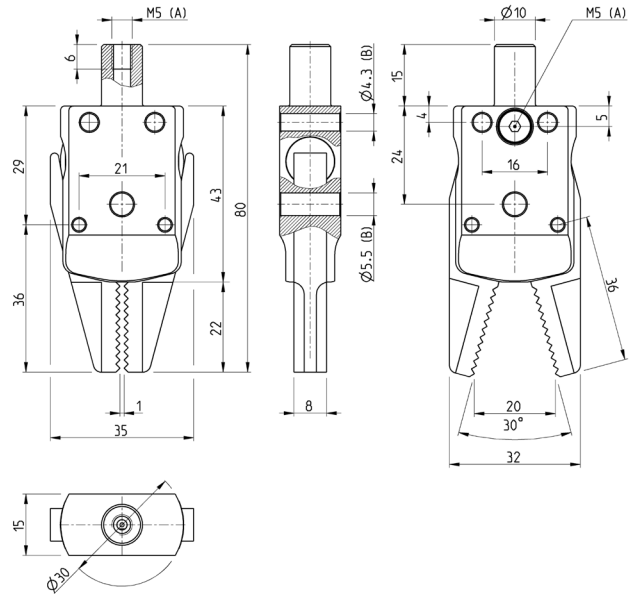
**Flat finger gripper Mod. RPGB-12-A**



GRIPPERS

3

Mod.  
RPGB-12-A

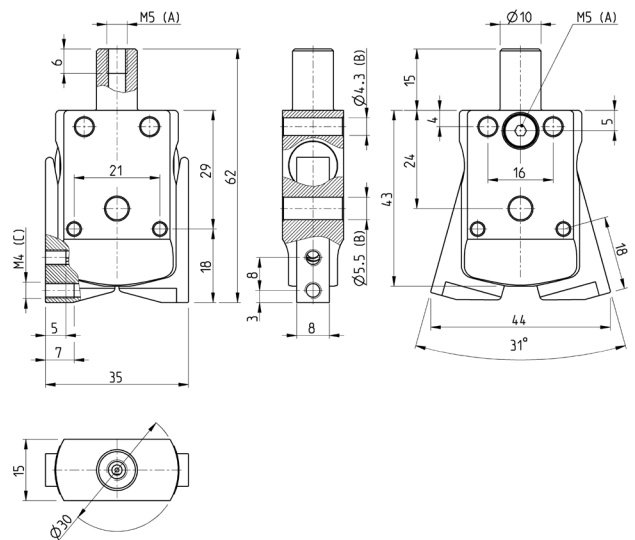


A = port connection  
B = mounting holes

**Short finger gripper Mod. RPGB-12-C**



Mod.  
RPGB-12-C



A = port connection  
B = mounting holes  
C = mounting thread

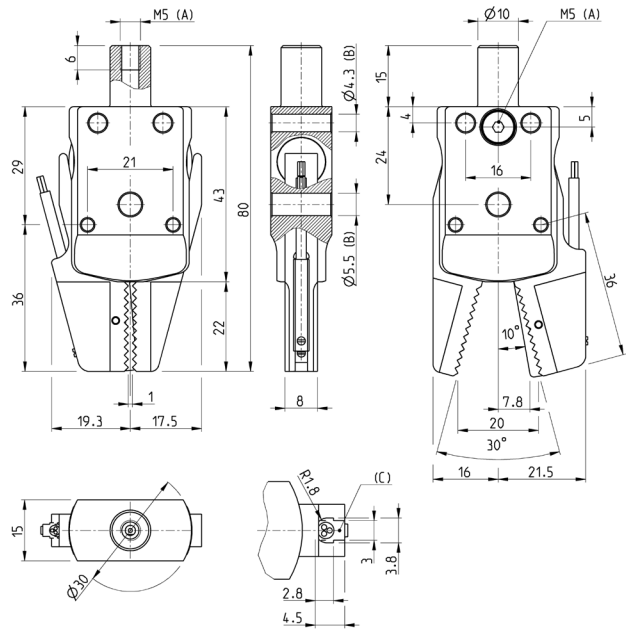
SPRUE GRIPPERS  
**SERIES RPGB - DIMENSIONAL CHARACTERISTICS**

**Flat finger gripper with sensor slot Mod. RPGB-12-D**

This model is supplied with sensor CSD-D-364 mounted.

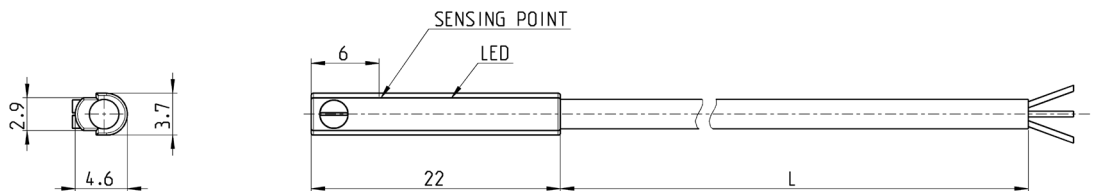
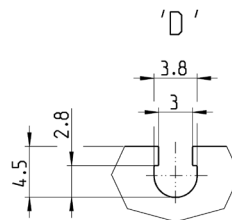


<b>Mod.</b>	
<b>RPGB-12-D</b>	

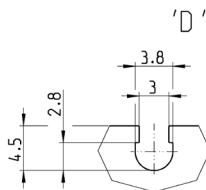


A = port connection  
 B = mounting hole  
 C = sensor groove

**Series CSD magnetic proximity switches, 3-wire cable, D-slot**



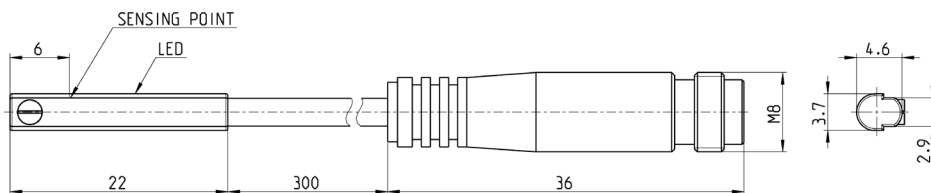
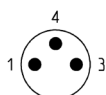
Mod.	Operation	Connections	Voltage	Output	Max. current	Max Load	Protection	L = length cable
<b>CSD-D-334</b>	Magnetostrictive	3 wires	10 + 27 V DC	PNP	200 mA	6W	Against polarity reversing and overvoltage	2 m

**Series CSD magnetic switches, male M8 3-pin conn., D-slot, right**


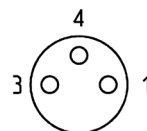
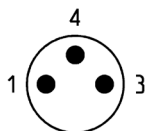
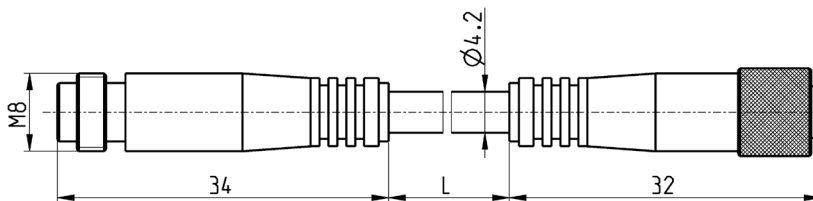
GRIPPERS

**3**

Length of cable 0,3 metres



Mod.	Operation	Connection	Voltage	Output	Max. current	Max Load	Protection
CSD-D-364	Magneto-resistive	3 wires with M8 connector	10 ÷ 27 V DC	PNP	200 mA	6 W	Against polarity reversing and overvoltage

**Extension with M8 connector, 3 pin male/female**

 General Purpose Input/  
 Output (GPIO)


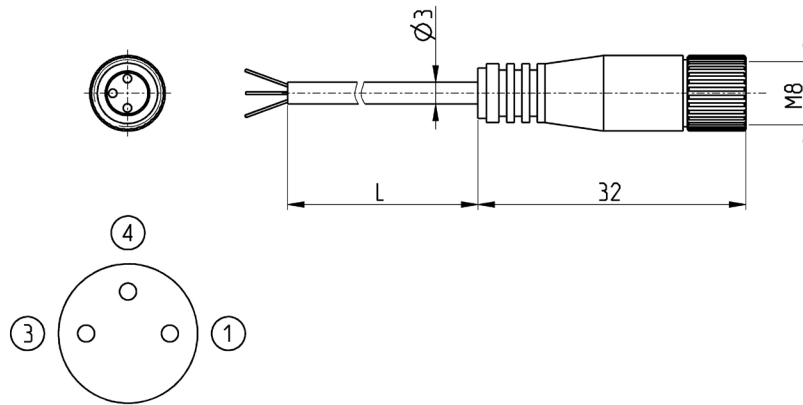
Mod.	
CS-DW03HB-C250	2.5
CS-DW03HB-C500	5

### Circular connectors M8, 3 Pin female



With PU sheathing, non shielded cable.  
 Protection class: IP65

- 1 BN = Brown +/-
- 4 BK = Black +/-
- 3 BU = Blue NC



Mod.	L = cable length (m)
CS-2	2
CS-5	5
CS-10	10