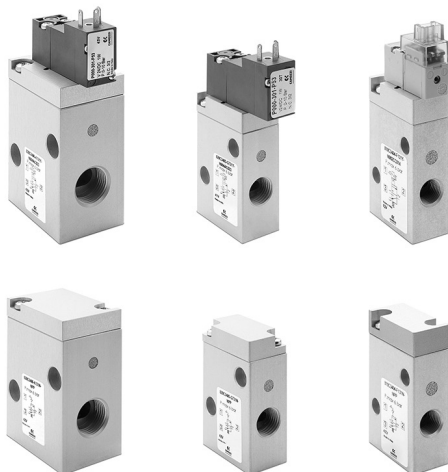


Series 8 pneumatically and electropneumatically operated valves

2/2-way - Normally Closed (NC), Normally Open (NO)

3/2-way - Normally Closed (NC), Normally Open (NO)



- » High flow
- » Available in 3 different sizes for general purpose
- » Version for use with oxygen available

The Series 8 enlarges the range of versions available with the cartridge valve directly integrated in an anodized aluminium body comprising also the pilot solenoid valve. The new bodies enable to have pneumatically operated versions with external piloting or electropneumatically operated versions with both external and internal piloting.

GENERAL DATA

TECHNICAL SPECIFICATIONS

| | |
|-----------------------------|---|
| Function | 2/2 NC - 2/2 NO - 3/2 NC - 3/2 NO |
| Operation | pneumatic or electropneumatic |
| Pneumatic connections | G1/8 - G1/4 - G3/8 |
| Nominal diameter | 5 ... 9 mm |
| Flow coefficient kv (l/min) | 6.5 ... 23 |
| Nominal flow | 420 ... 1480 l/min (air at 6 bar ΔP 1 bar) |
| Operating pressure | 3 ÷ 6 bar (0 ÷ 6 bar with external pilot supply) |
| External pilot pressure | 3 ÷ 6 bar |
| Operating temperature | 0 ÷ +50°C |
| Fluid | filtered air class 5.4.4 according to ISO 8573-1 (oil viscosity max. 32 cst), inert gases |
| Response times | ON <10 msec - OFF <10 msec |
| Installation | any position |

MATERIALS IN CONTACT WITH FLUID

| | |
|----------------|-------------------|
| Body | Aluminium |
| Seals | FKM |
| Internal parts | Aluminium - Brass |

ELECTRICAL SPECIFICATIONS

| | |
|-----------------------|---|
| Voltage | 24 V DC - other voltages upon request |
| Voltage tolerance | Size 1 = ±10% - Size 2 and 3 = -10% +15% |
| Power consumption | Size 1 = 1.3 W (inrush) 0.25 W (holding) - Size 2 and 3 = 2 W |
| Duty cycle | ED 100% |
| Electrical connection | connectors - wires (length = 300 mm) |
| Protection class | Size 1 = IP50 - Size 2 and 3 = IP65 (with connector) |

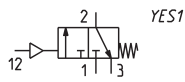
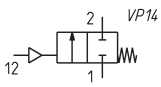
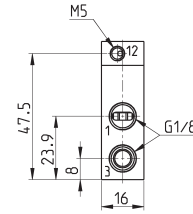
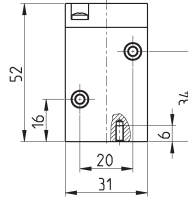
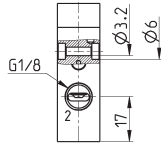
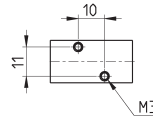
CODING EXAMPLE

| | | | | | | | | | | | | | | |
|----------|-----------|-----------|----------|-----------|----------|-----------|----------|----------|----------|----------|----------|-----------|-----------|-------------|
| 8 | 10 | C3 | 4 | 04 | - | F1 | 3 | 1 | Y | - | N | 00 | 2C | C014 |
|----------|-----------|-----------|----------|-----------|----------|-----------|----------|----------|----------|----------|----------|-----------|-----------|-------------|

| | |
|-------------|--|
| 8 | SERIES |
| 10 | SIZE: 10 = Size 1 20 = Size 2 30 = Size 3 |
| C3 | TYPE OF BODY: C3 = threaded body |
| 4 | NUMBER OF WAYS - FUNCTIONS: 1 = 2/2-way NC 2 = 2/2-way NO 4 = 3/2-way NC 5 = 3/2-way NO |
| 04 | PNEUMATIC CONNECTIONS: 04 = G1/8 (Size 1) 05 = G1/4 (Size 2) 06 = G3/8 (Size 3) |
| F1 | NOMINAL DIAMETER: F1 = 5.0 mm (Size 1) G7 = 6.6 mm (Size 2) K1 = 9.0 mm (Size 3) |
| 3 | SEAL MATERIAL: 3 = FKM |
| 1 | BODY MATERIAL: 1 = aluminium |
| Y | MANUAL OVERRIDE: N = not provided Y = provided monostable |
| N | MOUNTING ACCESSORIES: N = not provided |
| 00 | OPTIONS: 00 = no option PP = pneumatic piloting PE = electropilot with external piloting |
| 2C | ELECTRICAL CONNECTION: 2C = connection type KN 90° + protection + led (Size 1) 2F = connection type KN 90° in line + protection + led (Size 1) 3A = connection DIN EN 175 301-803-C (8 mm) 4A = industry standard connection (9.4 mm) 7A = wires - length 300 mm (Size 2 - 3) |
| C014 | VOLTAGE - POWER CONSUMPTION: C012 = 12V DC 1.3/0.25W (Size 1) C014 = 24V DC 1.3/0.25W (Size 1) C020 = 12V DC 2W (Size 2 - 3) C023 = 24V DC 2W (Size 2 - 3) C025 = 48V DC 2W (Size 2 - 3) |
| | VERSION: = standard OX1 = for use with oxygen (non volatile residual less than 550 mg/m ²) OX2 = for use with oxygen (non volatile residual less than 33 mg/m ²) |

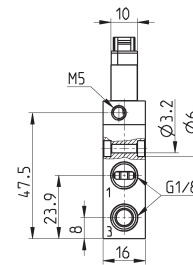
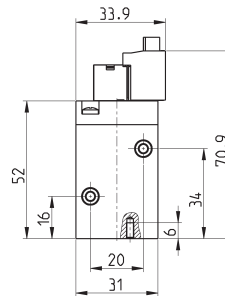
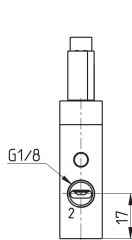
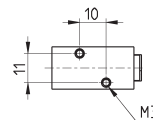
SERIES 8 PNEUMATICALLY AND ELECTROPNEUMATICALLY OPERATED VALVES

Pneumatic valve size 1 - 2/2- and 3/2-way, NC and NO

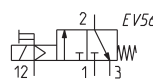
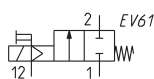
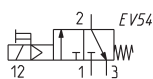
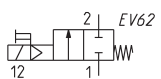


| Mod. | Function | Pneumatic connection | Orifice Ø (mm) | kv (l/min) | Qn (NL/min) | Min÷max pressure (bar) | Min÷max pilot pressure (bar) | Pilot supply | Symbol |
|--------------------|---|----------------------|----------------|------------|-------------|------------------------|------------------------------|--------------|--------|
| 810C3104-F131N-NPP | 2/2 NC (for the NO function it is required to maintain a continuous pneumatic pilot supply) | G1/8 | 5.0 | 6.5 | 420 | 0 ÷ 6 | 3 ÷ 6 | External | VP14 |
| 810C3404-F131N-NPP | 3/2 NC (for the NO function it is required to maintain a continuous pneumatic pilot supply) | G1/8 | 5.0 | 6.5 | 420 | 0 ÷ 6 | 3 ÷ 6 | External | YES1 |

Solenoid valve size 1, 2/2- and 3/2-way, NC

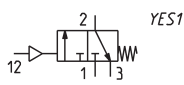
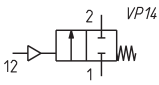
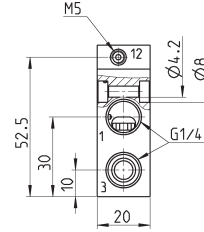
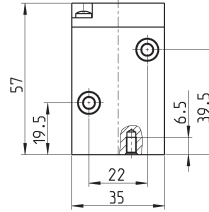
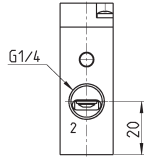
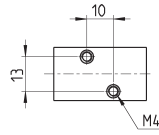


* please complete the code with ELECTRIC CONNECTION (option 2C or 2F) and VOLTAGE (see the CODING EXAMPLE).



| Mod. | Function | Pneumatic connection | Orifice Ø (mm) | kv (l/min) | Qn (NL/min) | Min÷max pressure (bar) | Min÷max pilot pressure (bar) | Pilot supply | Symbol |
|---------------------|----------|----------------------|----------------|------------|-------------|------------------------|------------------------------|--------------|--------|
| 810C3104-F131Y-N00* | 2/2 NC | G1/8 | 5.0 | 6.5 | 420 | 3 ÷ 6 | - | Internal | EV62 |
| 810C3404-F131Y-N00* | 3/2 NC | G1/8 | 5.0 | 6.5 | 420 | 3 ÷ 6 | - | Internal | EV54 |
| 810C3104-F131Y-NPE* | 2/2 NC | G1/8 | 5.0 | 6.5 | 420 | 0 ÷ 6 | 3 ÷ 6 | External | EV61 |
| 810C3404-F131Y-NPE* | 3/2 NC | G1/8 | 5.0 | 6.5 | 420 | 0 ÷ 6 | 3 ÷ 6 | External | EV56 |

Pneumatic valve size 2 - 2/2- and 3/2-way, NC and NO

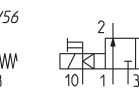
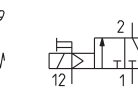
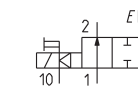
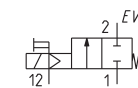
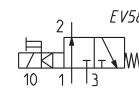
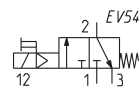
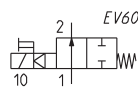
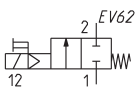
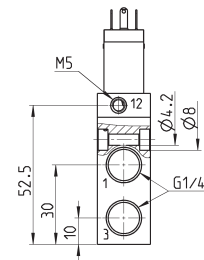
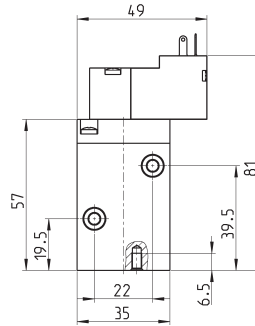
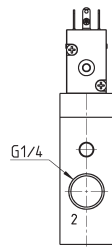
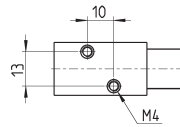


| Mod. | Function | Pneumatic connection | Orifice Ø (mm) | kv (l/min) | Qn (NL/min) | Min÷max pressure (bar) | Min÷max pilot pressure (bar) | Pilot supply | Symbol |
|--------------------|---|----------------------|----------------|------------|-------------|------------------------|------------------------------|--------------|--------|
| 820C3105-G731N-NPP | 2/2 NC (for the NO function it is required to maintain a continuous pneumatic pilot supply) | G1/4 | 6.6 | 12.5 | 800 | 0 ÷ 6 | 3 ÷ 6 | External | VP14 |
| 820C3405-G731N-NPP | 3/2 NC (for the NO function it is required to maintain a continuous pneumatic pilot supply) | G1/4 | 6.6 | 12.5 | 800 | 0 ÷ 6 | 3 ÷ 6 | External | YES1 |

Solenoid valve size 2, 2/2- and 3/2-way, NC and NO

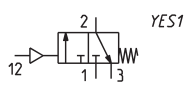
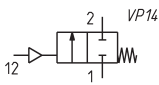
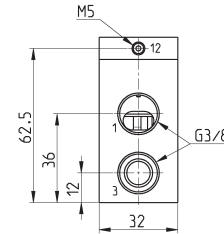
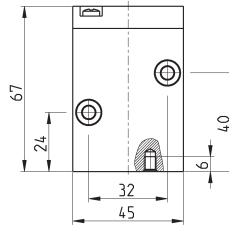
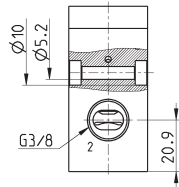
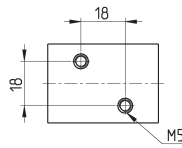


* please complete the code with ELECTRIC CONNECTION (option 3A, 4A o 7A) and VOLTAGE (see the CODING EXAMPLE).



| Mod. | Function | Pneumatic connection | Orifice Ø (mm) | kv (l/min) | Qn (NL/min) | Min÷max pressure (bar) | Min÷max pilot pressure (bar) | Pilot supply | Symbol |
|---------------------|----------|----------------------|----------------|------------|-------------|------------------------|------------------------------|--------------|--------|
| 820C3105-G731Y-N00* | 2/2 NC | G1/4 | 6.6 | 12.5 | 800 | 3 ÷ 6 | - | Internal | EV62 |
| 820C3205-G731Y-N00* | 2/2 NO | G1/4 | 6.6 | 12.5 | 800 | 3 ÷ 6 | - | Internal | EV60 |
| 820C3405-G731Y-N00* | 3/2 NC | G1/4 | 6.6 | 12.5 | 800 | 3 ÷ 6 | - | Internal | EV54 |
| 820C3505-G731Y-N00* | 3/2 NO | G1/4 | 6.6 | 12.5 | 800 | 3 ÷ 6 | - | Internal | EV58 |
| 820C3105-G731Y-NPE* | 2/2 NC | G1/4 | 6.6 | 12.5 | 800 | 0 ÷ 6 | 3 ÷ 6 | External | EV61 |
| 820C3205-G731Y-NPE* | 2/2 NO | G1/4 | 6.6 | 12.5 | 800 | 0 ÷ 6 | 3 ÷ 6 | External | EV59 |
| 820C3405-G731Y-NPE* | 3/2 NC | G1/4 | 6.6 | 12.5 | 800 | 0 ÷ 6 | 3 ÷ 6 | External | EV56 |
| 820C3505-G731Y-NPE* | 3/2 NO | G1/4 | 6.6 | 12.5 | 800 | 0 ÷ 6 | 3 ÷ 6 | External | EV57 |

Pneumatic valve size 3 - 2/2- and 3/2-way, NC and NO

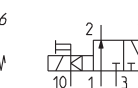
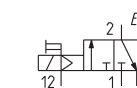
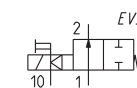
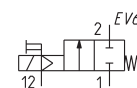
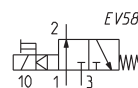
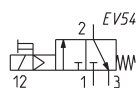
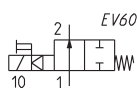
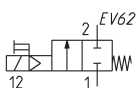
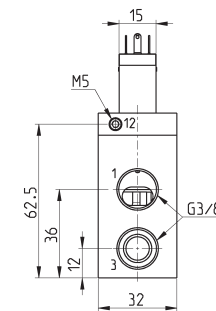
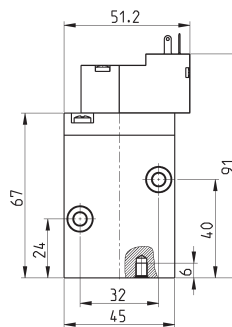
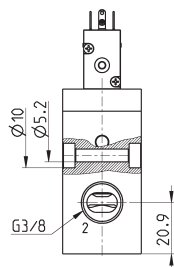
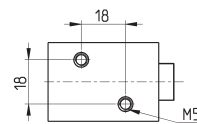


| Mod. | Function | Pneumatic connection | Orifice Ø (mm) | kv (l/min) | Qn (NL/min) | Min÷max pressure (bar) | Min÷max pilot pressure (bar) | Pilot supply | Symbol |
|--------------------|---|----------------------|----------------|------------|-------------|------------------------|------------------------------|--------------|--------|
| 830C3106-K131N-NPP | 2/2 NC (for the NO function it is required to maintain a continuous pneumatic pilot supply) | G3/8 | 9.0 | 23 | 1480 | 0 ÷ 6 | 3 ÷ 6 | External | VP14 |
| 830C3406-K131N-NPP | 3/2 NC (for the NO function it is required to maintain a continuous pneumatic pilot supply) | G3/8 | 9.0 | 23 | 1480 | 0 ÷ 6 | 3 ÷ 6 | External | YES1 |

Solenoid valve size 3, 2/2- and 3/2-way, NC and NO



* please complete the code with ELECTRIC CONNECTION (option 3A, 4A o 7A) and VOLTAGE (see the CODING EXAMPLE).



| Mod. | Function | Pneumatic connection | Orifice Ø (mm) | kv (l/min) | Qn (NL/min) | Min÷max pressure (bar) | Min÷max pilot pressure (bar) | Pilot supply | Symbol |
|---------------------|----------|----------------------|----------------|------------|-------------|------------------------|------------------------------|--------------|--------|
| 830C3106-K131Y-N00* | 2/2 NC | G3/8 | 9.0 | 23 | 1480 | 3 ÷ 6 | - | Internal | EV62 |
| 830C3206-K131Y-N00* | 2/2 NO | G3/8 | 9.0 | 23 | 1480 | 3 ÷ 6 | - | Internal | EV60 |
| 830C3406-K131Y-N00* | 3/2 NC | G3/8 | 9.0 | 23 | 1480 | 3 ÷ 6 | - | Internal | EV54 |
| 830C3506-K131Y-N00* | 3/2 NO | G3/8 | 9.0 | 23 | 1480 | 3 ÷ 6 | - | Internal | EV58 |
| 830C3106-K131Y-NPE* | 2/2 NC | G3/8 | 9.0 | 23 | 1480 | 0 ÷ 6 | 3 ÷ 6 | External | EV61 |
| 830C3206-K131Y-NPE* | 2/2 NO | G3/8 | 9.0 | 23 | 1480 | 0 ÷ 6 | 3 ÷ 6 | External | EV59 |
| 830C3406-K131Y-NPE* | 3/2 NC | G3/8 | 9.0 | 23 | 1480 | 0 ÷ 6 | 3 ÷ 6 | External | EV56 |
| 830C3506-K131Y-NPE* | 3/2 NO | G3/8 | 9.0 | 23 | 1480 | 0 ÷ 6 | 3 ÷ 6 | External | EV57 |