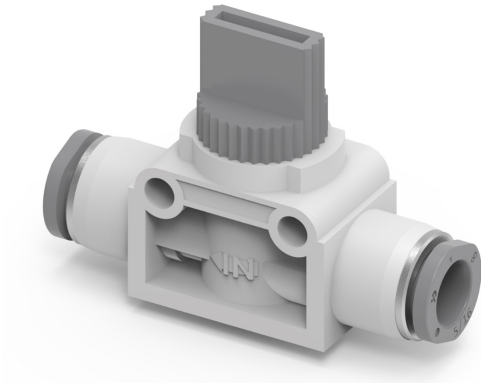


# HAND VALVE - UNION STRAIGHT

## SERIES CL29 - INCH



### Shut-off Valves

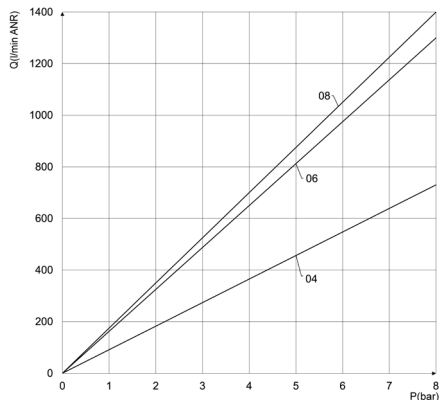
Enable in-line opening and closing of a pneumatic circuit.  
Rotation of the handle to open or shut compressed air for the pneumatic devices.

### General Data

<b>Applicable fluid</b>	Compressed air (Not applicable to gases or liquids)
<b>Operating pressure</b>	150 PSI / 10.3 Bar 14.5 - 150 PSI (Flow Control Valve) The combination with the applied tube shall be decided based on the maximum operating pressure of the tube
<b>Cracking pressure [bar]</b>	1.5~3 PSI (Check Valve)
<b>Negative pressure</b>	29.5" Hg (Check Valve and Ball Valve only)
<b>Operating temperature range</b>	32~140° F / 0~60°C

Flow diagram (1 → 2) - valves Series CL29

CL29

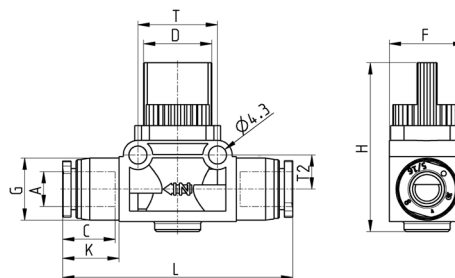
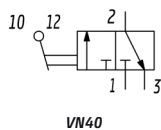
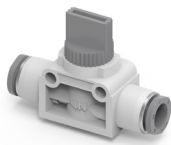


P = Regulated outlet pressure  
 Q = Flow

Hand valve - Union straight Mod. CL29

News

3/2 in-line, Push-in



Mod.	A OD	D	C	F	G	H	K	L	T	T2	Weight (lb)	Weight [g]
CL29-04-A	1/4	0,642	0,661	0,709	0,512	1,587	0,492	2,087	0,748	0,323	0,049	22,40
CL29-06-A	3/8	0,760	0,791	0,835	0,689	1,594	0,567	2,433	0,945	0,429	0,089	40,40
CL29-08-A	1/2	0,760	0,909	0,835	0,827	1,594	0,701	2,701	0,945	0,429	0,104	47,00