

# FUNCTION FITTINGS

## SERIES CLFB - INCH



- Optimum sealing
- Maximum flow
- Compact and lightweight
- Applications:
  - Robotics
  - Packaging
  - Textile
  - Machine Tools
  - Pneumatic Systems
  - Vacuum

### Flow Controls

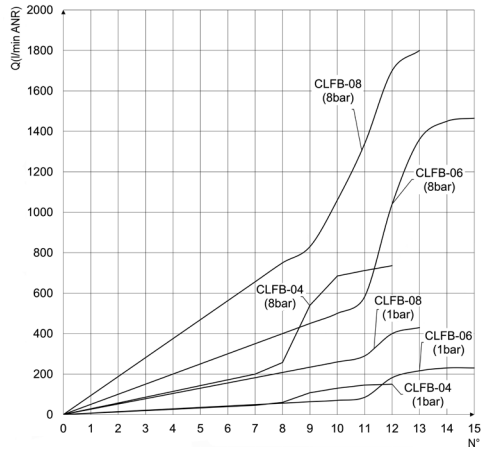
Flow controls are unidirectional.

## General Data

<b>Applicable fluid</b>	Compressed air (Not applicable to gases or liquids)
<b>Operating pressure</b>	150 PSI / 10.3 Bar 14.5 - 150 PSI (Flow Control Valve) The combination with the applied tube shall be decided based on the maximum operating pressure of the tube.
<b>Cracking pressure [bar]</b>	1.5~3 PSI (Check Valve)
<b>Negative pressure</b>	29.5" Hg (Check Valve and Ball Valve only)
<b>Operating temperature range</b>	32~140° F / 0~60°C

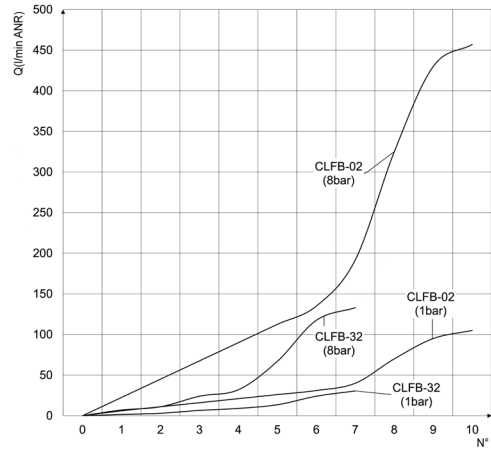
Flow diagrams (1 → 2) - valves Series CLFB

CLFB



N° = number of screw turns  
Q = Flow

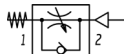
CLFB-2



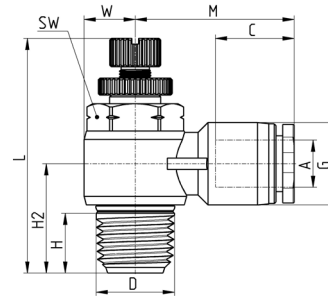
N° = Number of screw turns  
Q = Flow

News

**Meter-out flow control Mod. CLFB-C - Inch**



RP02



Mod.	A OD	D NPTF	C	G	H	H2	L Min.	L Max.	M	SW	W	Weight (lb)	Weight [g]	
CLFB-32-53-C	5/32	10-32 UNF	0,583	0,413	0,142	0,406	1,059	1,146	0,839	5/16	0,394	0,022	9,8	●
CLFB-02-53-C	5/32	1/8	0,583	0,413	0,323	0,594	1,374	1,567	0,925	7/16	0,559	0,041	18,8	-
CLFB-04-53-C	5/32	1/4	0,583	0,413	0,433	0,724	1,598	1,85	1	19/32	0,717	0,077	34,8	-
CLFB-32-04-C	1/4	10-32 UNF	0,661	0,512	0,142	0,417	1,059	1,146	0,933	5/16	3,937	0,024	10,7	●
CLFB-02-04-C	1/4	1/8	0,661	0,512	0,323	0,598	1,374	1,567	9,803	7/16	5,591	0,043	19,7	-
CLFB-04-04-C	1/4	1/4	0,661	0,512	0,433	0,724	1,598	1,85	1,055	19/32	0,717	0,079	35,7	-
CLFB-06-04-C	1/4	3/8	0,661	0,512	0,516	0,862	1,886	2,161	11,181	5/16	0,89	0,147	66,7	-
CLFB-02-05-C	5/16	1/8	0,724	0,571	0,323	0,638	1,374	1,567	1,031	7/16	0,559	0,048	21,7	-
CLFB-04-05-C	5/16	1/4	0,724	0,571	0,433	0,756	1,598	1,85	11,063	19/32	7,165	0,083	37,7	-
CLFB-06-05-C	5/16	3/8	0,724	0,571	0,516	0,862	1,886	2,161	1,15	3/4	0,89	0,154	69,7	-
CLFB-04-06-C	3/8	1/4	0,791	0,689	0,433	0,815	1,598	1,85	1,22	19/32	0,717	0,086	39,2	-
CLFB-06-06-C	3/8	3/8	0,791	0,689	0,516	0,89	1,886	2,161	1,213	3/4	0,89	0,155	70,2	-
CLFB-08-06-C	3/8	1/2	0,791	0,689	0,65	1,043	2,122	2,413	1,299	15/16	1,102	0,241	109,2	-
CLFB-06-08-C	1/2	3/8	0,909	0,819	0,516	0,949	1,886	2,161	1,339	3/4	0,89	0,163	74	-
CLFB-08-08-C	1/2	1/2	0,909	0,819	0,65	1,091	2,122	2,413	1,437	15/16	1,102	0,262	119	-

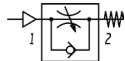
- = with pre-applied sealant  
 ● = with O-Ring

VALVES AND SOLENOID VALVES

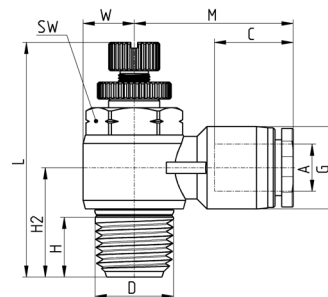
6

**Meter-in flow control Mod. CLFB-V**

News



RP01



Mod.	A OD	D NPTF	C	G	H	H2	L Min.	L Max.	M	SW	W	Weight (lb)	Weight [g]	
CLFB-32-53-V	5/32	10-32 UNF	0,583	0,413	0,142	0,406	1,059	1,146	0,839	5/16	0,394	0,022	9,8	●
CLFB-02-53-V	5/32	1/8	0,583	0,413	0,323	0,594	1,374	1,567	0,925	7/16	0,559	0,041	18,8	-
CLFB-04-53-V	5/32	1/4	0,583	0,413	0,433	0,724	1,598	1,85	1	19/32	0,717	0,077	34,8	-
CLFB-32-04-V	1/4	10-32 UNF	0,661	0,512	0,142	0,417	1,059	1,146	0,933	5/16	3,937	0,024	10,7	●
CLFB-02-04-V	1/4	1/8	0,661	0,512	0,323	0,598	1,374	1,567	9,803	7/16	5,591	0,043	19,7	-
CLFB-04-04-V	1/4	1/4	0,661	0,512	0,433	0,724	1,598	1,85	1,055	19/32	0,717	0,079	35,7	-
CLFB-02-05-V	5/16	1/8	0,724	0,571	0,323	0,638	1,374	1,567	1,031	7/16	0,559	0,048	21,7	-
CLFB-04-05-V	5/16	1/4	0,724	0,571	0,433	0,756	1,598	1,85	11,063	19/32	7,165	0,083	37,7	-
CLFB-04-06-V	3/8	1/4	0,791	0,689	0,433	0,815	1,598	1,85	1,22	19/32	0,717	0,086	39,2	-
CLFB-06-06-V	3/8	3/8	0,791	0,689	0,516	0,89	1,886	2,161	1,213	3/4	0,89	0,155	70,2	-
CLFB-08-06-V	3/8	1/2	0,791	0,689	0,65	1,043	2,122	2,413	1,229	15/16	1,102	0,241	109,2	-

- = with pre-applied sealant  
 ● = with O-Ring