

Series VED inline ejectors

Vacuum ejectors without moving parts, based on the Venturi principle, used for direct installation on suction pads.



- » No moving parts for long life and maintenance
- » Easy and fast installation directly at the gripping point
- » Reduced dimensions and weight

These ejectors are used for direct installation inline between the suction pad compressed air supply. This substantially reduces the volume to be evacuated and allows therefore shorter cycle times.

GENERAL DATA

Description - body in anodized Aluminium
- internal nozzle in brass

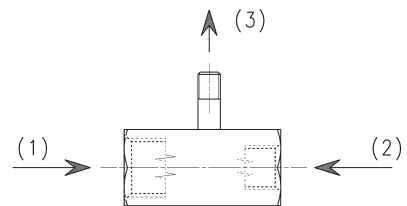
CODING EXAMPLE

VED	-	05
------------	----------	-----------

VED	SERIES VED = Vacuum ejectors
05	NOZZLE DIAMETER 05 = 0,5 mm 07 = 0,7 mm 09 = 0,9 mm

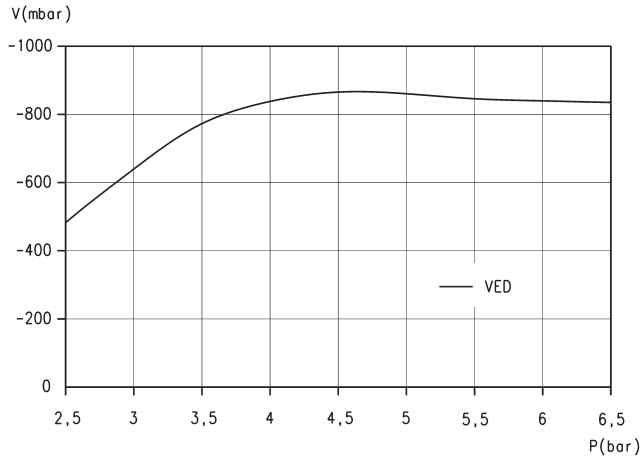
 TECHNICAL DATA


- 1 = Compressed Air Inlet
- 2 = Vacuum Inlet
- 3 = Exhaust



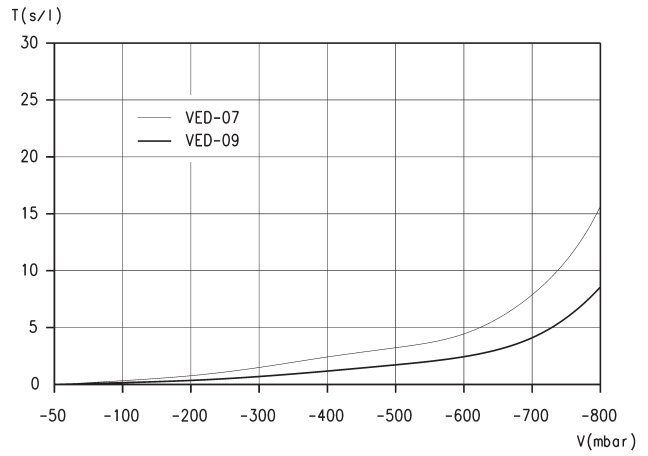
TECHNICAL DATA								
Mod.	Ø nozzle (mm)	Degree of evacuation (%)	Suction rate max. (l/min)	Suction rate max. (m ³ /h)	Air consumption (l/min)	Air consumption (m ³ /h)	Optimum supply pressure (bar)	Weight (kg)
VED-05	0,5	87	7	0,4	12	0,7	5	0,015
VED-07	0,7	90	14	0,8	21	1,3	5	0,015
VED-09	0,9	89	21	1,3	36	2,2	5	0,015

Diagrams VED



LEGEND:
V = Vacuum values
P = Working pressure

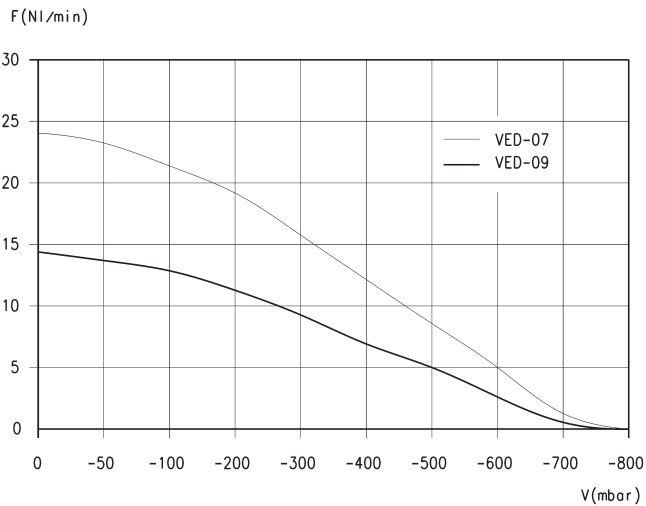
Note: vacuum reachable with different supply pressures



LEGEND:
T = Evacuation time
V = Vacuum values

Note: evacuation time for different vacuum values

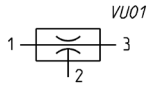
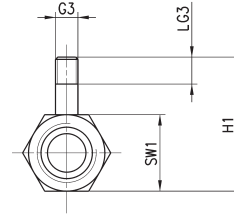
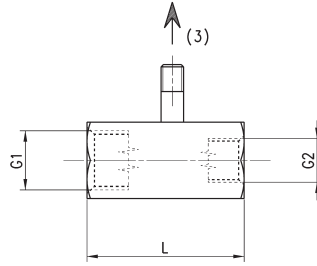
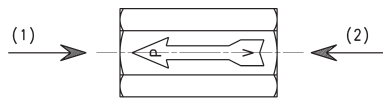
Diagrams VED



LEGEND:
F = Suction rate
V = Vacuum values

Note: Suction rate with different vacuum values

EJECTOR VED 05 07 and 09



DIMENSIONS							
Mod.	G1	G2	G3*	H1	L	LG3	SW1
VED-05	G1/4	G1/8	M5	29,8	35	5	17
VED-07	G1/4	G1/8	M5	29,8	35	5	17
VED-09	G1/4	G1/8	M5	29,8	35	5	17

SERIES VED INLINE EJECTORS