

RAPID PUSH-ON FITTINGS IN 316L STAINLESS STEEL

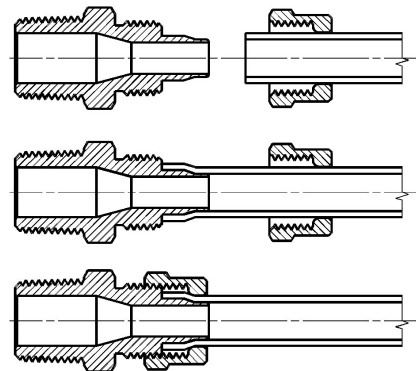
SERIES X1000



Series X1000 rapid push-on fittings can be easily installed. The push-on locking nuts can be tightened both manually and with a spanner even in case of stiffer tubes like PA or Hytrel Polyester. The shape of the special guiding cone ensures that the tube cannot be accidentally cut.

GENERAL DATA

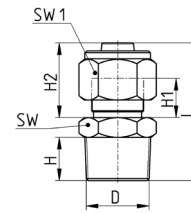
Diameters	6/4 - 8/6 - 10/8 - 12/10
Thread	GAS conical ISO 7 (BSPT)
Temperature	-40°C ÷ +180°C NOTE: for a better use of the fitting we recommend to check the tubing specifications
Tube to connect	Polyamide (PA), Polyurethane (PU), Polyethylene (PE), PTFE, FEP, Hytrel Polyester
Medium	All fluids compatible with the fitting component materials
Materials	Body: stainless steel 316L Nut: stainless steel 316L
Operating pressure	The nominal pressure of the fittings is always higher than the pressure of the tube



RAPID PUSH-ON FITTINGS IN 316L STAINLESS STEEL
SERIES X1000 - DIMENSIONAL CHARACTERISTICS
BSPT Male Connector Mod. X1510

 Regulation (CE) n.
1935/2004


NSF169** **



Mod.	Tube	D	H	H1	H2	L	SW	SW1
X1510 6/4-1/8	6/4	R1/8	8	8	15	27	12	12
X1510 6/4-1/4	6/4	R1/4	10	8	15	31	14	12
X1510 8/6-1/8	8/6	R1/8	8	8	16	28	14	14
X1510 8/6-1/4	8/6	R1/4	10	8	16	32	14	14
X1510 8/6-3/8	8/6	R3/8	10	8	16	32	17	14
X1510 10/8-1/4	10/8	R1/4	10,5	9	17	33	14	17
X1510 10/8-3/8	10/8	R3/8	10	9	17,5	33	17	17
X1510 10/8-1/2	10/8	R1/2	13	9	17	37	22	17
X1510 12/10-1/4	12/10	R1/4	11	9	18	34	17	19
X1510 12/10-3/8	12/10	R3/8	10	9	18	34	17	19
X1510 12/10-1/2	12/10	R1/2	13	9	18	38	22	19

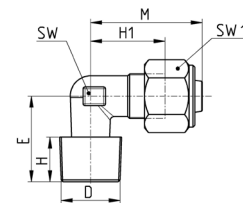
FITTINGS, CONNECTORS AND TUBES

BSPT Male Elbow Mod. X1500

10


 Regulation (CE) n.
1935/2004


NSF169** **



Mod.	Tube	D	E	H	H1	M	SW	SW1
X1500 6/4-1/8	6/4	R1/8	15,5	7,5	15	21	8	12
X1500 6/4-1/4	6/4	R1/4	19,5	7,5	15	21	8	12
X1500 8/6-1/8	8/6	R1/8	17	7,5	16	22,5	10	14
X1500 8/6-1/4	8/6	R1/4	21	11	16,5	22,5	10	14
X1500 8/6-3/8	8/6	R3/8	24,5	12	19,5	28	14	14
X1500 10/8-1/4	10/8	R1/4	21,5	10	17,5	25,5	12	17
X1500 10/8-3/8	10/8	R3/8	23	12	18	28	14	17
X1500 10/8-1/2	10/8	R1/2	28	15	21	30	17	17
X1500 12/10-3/8	12/10	R3/8	22	12	18	28	14	19
X1500 12/10-1/2	12/10	R1/2	26	15	21	30	17	19

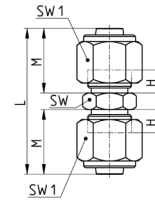
Union Connector Mod. X1580



Regulation (CE) n.
1935/2004



NSF169**



Mod.	Tube	H	L	M	SW	SW1
X1580 6/4	6/4	8	37	16	12	12
X1580 8/6	8/6	8	37	15,5	12	14
X1580 10/8	10/8	9	40	18	14	17
X1580 12/10	12/10	9	43	19	17	19

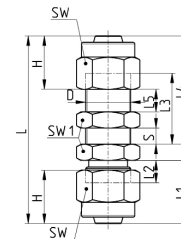
Bulkhead Union Connector Mod. X1590



Regulation (CE) n.
1935/2004



NSF169**

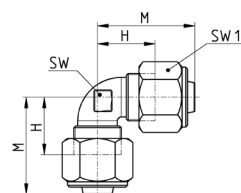


Mod.	Tube	D	H	L	L1	L2	L3	L4	L5	S (max)	SW	SW1
X1590 6/4	6/4	M10x1	11,4	47	15	8	20	27	5	13	12	14
X1590 8/6	8/6	M12x1	12,7	50	16	8	21	29	5	13	14	17
X1590 10/8	10/8	M14x1	14,5	54	17,5	9	23	31,5	5	14	17	17
X1590 12/10	12/10	M16x1	14,5	57	18	9	25	34	5	14	19	19

RAPID PUSH-ON FITTINGS IN 316L STAINLESS STEEL
SERIES X1000 - DIMENSIONAL CHARACTERISTICS
Elbow Connector Mod. X1550

 Regulation (CE) n.
1935/2004


NSF169** **

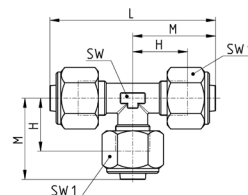


Mod.	Tube	H	M	SW	SW1
X1550 6/4	6/4	15	21	8	12
X1550 8/6	8/6	16,5	22,5	10	14
X1550 10/8	10/8	18	25,5	12	17
X1550 12/10	12/10	19	29	14	19

Tee Connector Mod. X1540

 Regulation (CE) n.
1935/2004


NSF169** **



Mod.	Tube	H	L	M	SW	SW1
X1540 6/4	6/4	14,5	42	21	8	12
X1540 8/6	8/6	16,5	45	22,5	10	14
X1540 10/8	10/8	18	51	25	12	17
X1540 12/10	12/10	19,6	58	28,8	14	19

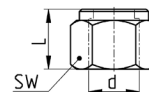
FITTINGS, CONNECTORS AND TUBES

10

Blocking nut Mod. X1703

 Regulation (CE) n.
1935/2004


NSF169** **



Mod.	Tube	d	L	SW
X1703 6/4	6/4	10x1	11,4	12
X1703 8/6	8/6	12x1	11,7	14
X1703 10/8	10/8	14x1	13,5	17
X1703 12/10	12/10	16x1	14,5	19