

## Kurzhubzylinder - Serie QP-QPR

Produktcode: QP1A012A015

Datenblatt Erstellungsdatum: 20.05.26 17:17

Überprüfen Sie das aktualisierte Dokument  [klicken](#)

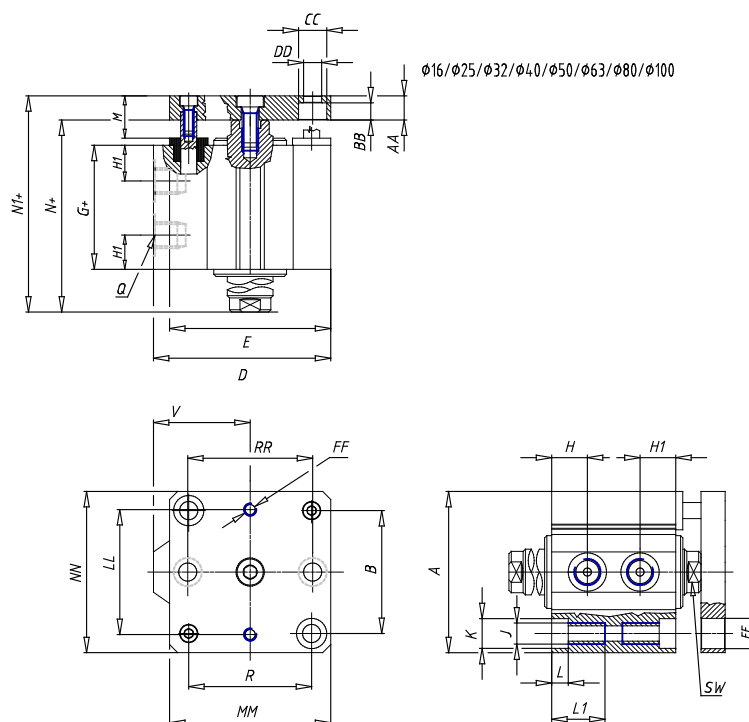


### TECHNISCHE DATEN

|                          |                       |
|--------------------------|-----------------------|
| <b>Serie</b>             | QP = standard         |
| <b>Funktion</b>          | 1 = einfachwirkend    |
| <b>Werkstoff</b>         | A = Edelstahl gerollt |
| <b>Diameter (mm)</b>     | 12                    |
| <b>Bauart</b>            | A = Standard          |
| <b>Hub (mm)</b>          | 15                    |
| <b>Dichtungsoptionen</b> | -                     |
| <b>Zertifizierungen</b>  | = standard            |

# Kurzhubzylinder - Serie QP-QPR

Produktcode: QP1A012A015



## MAßE

|          |       |
|----------|-------|
| A (mm)   | 23.8  |
| B (mm)   | 15.5  |
| B1 (mm)  | 13    |
| B2 (mm)  | -     |
| Ø C (mm) | 6     |
| D (mm)   | 25.00 |
| E (mm)   | 25.00 |
| G (mm)   | 34.6  |
| G1 (mm)  | 34.6  |
| H1 (mm)  | 12.3  |
| H (mm)   | 7.8   |
| J (mm)   | 3.5   |
| J1       | -     |
| K (mm)   | 5.8   |
| L (mm)   | 3.0   |
| L1 (mm)  | -     |
| M (mm)   | 5.5   |
| M1 (mm)  | 4.5   |
| N (mm)   | 37.9  |
| N1 (mm)  | -     |
| Ø O (mm) | 12    |
| P        | M3    |
| Q        | M5    |

|           |       |
|-----------|-------|
| R (mm)    | 15.5  |
| R1 (mm)   | 16.75 |
| R2 (mm)   | -     |
| SW (mm)   | 5     |
| t (mm)    | -     |
| U (mm)    | 9     |
| V (mm)    | 13.15 |
| AA (mm)   | 5     |
| BB (mm)   | 3.5   |
| Ø CC (mm) | 6.2   |
| Ø DD (mm) | 3.2   |
| EE (mm)   | 5.8   |
| FF        | M3    |
| LL (mm)   | 15.5  |
| MM (mm)   | 25.0  |
| NN (mm)   | 24    |
| RR (mm)   | 15.5  |
| VV (mm)   | 12    |
| Z (mm)    | -     |