

- Fittings Mod. 1020

Product code: 1020 10-1/2

Datasheet creation date: 10/03/2025 10:31

Check the most updated document online [click here](#)

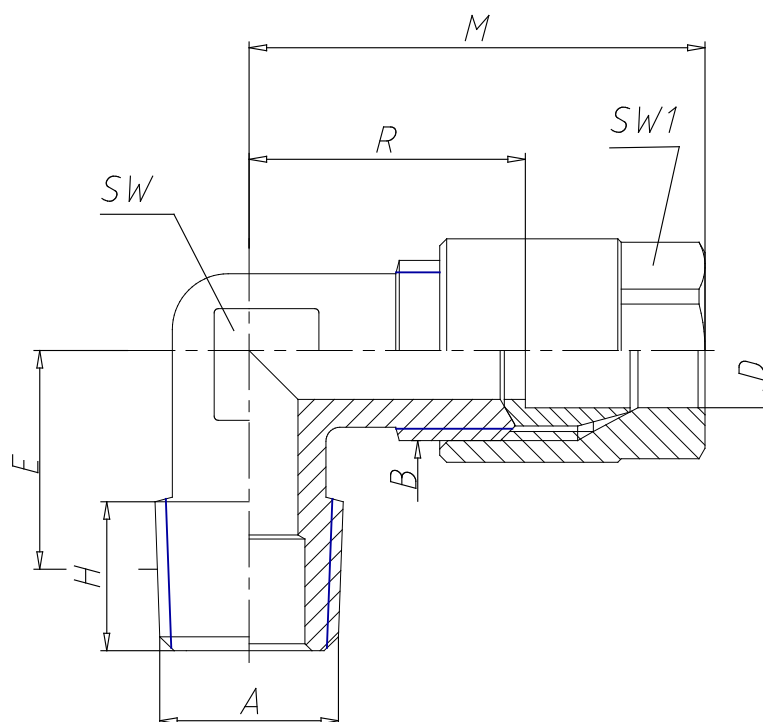


TECHNICAL DATA

Mod.	1020 10-1/2
------	-------------

- Fittings Mod. 1020

Product code: 1020 10-1/2



DIMENSIONS

D (mm)	10
B1	R1/2
B	3/8
E (mm)	16.0
H (mm)	14.0
M (mm)	38.0
R (mm)	22.5
SW (mm)	16
SW1 (mm)	17
With bi-conical olive	-