

- Fittings Mod. 1020

Product code: 1020 10-3/8

Datasheet creation date: 10/03/2025 10:31

Check the most updated document online [click here](#)

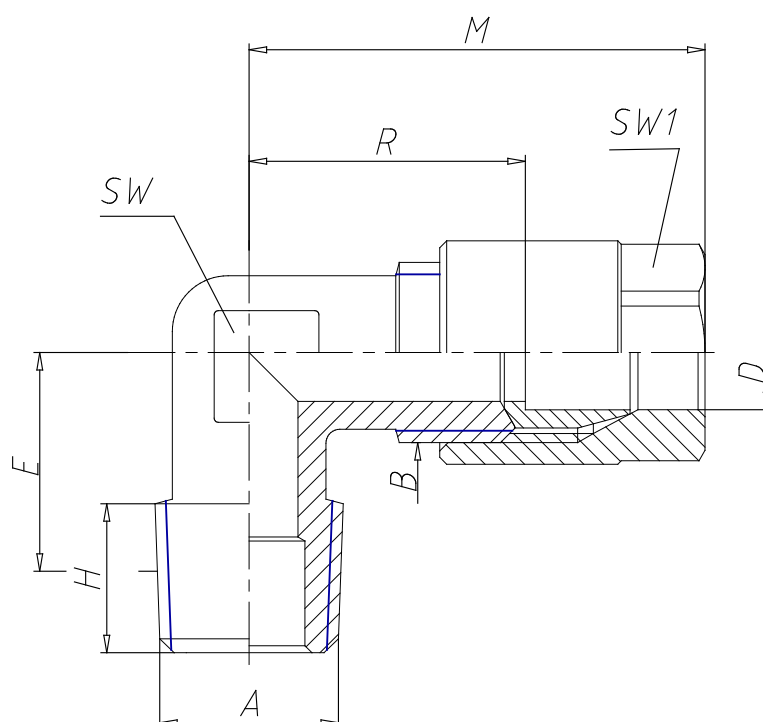


TECHNICAL DATA

Mod.	1020 10-3/8
------	-------------

- Fittings Mod. 1020

Product code: 1020 10-3/8



DIMENSIONS

D (mm)	10
B1	R3/8
B	3/8
E (mm)	15.5
H (mm)	11.5
M (mm)	38.0
R (mm)	22.5
SW (mm)	14
SW1 (mm)	17
With bi-conical olive	-