

- Fittings Mod. 1020

Product code: 1020 12-3/8

Datasheet creation date: 10/03/2025 10:31

Check the most updated document online [click here](#)

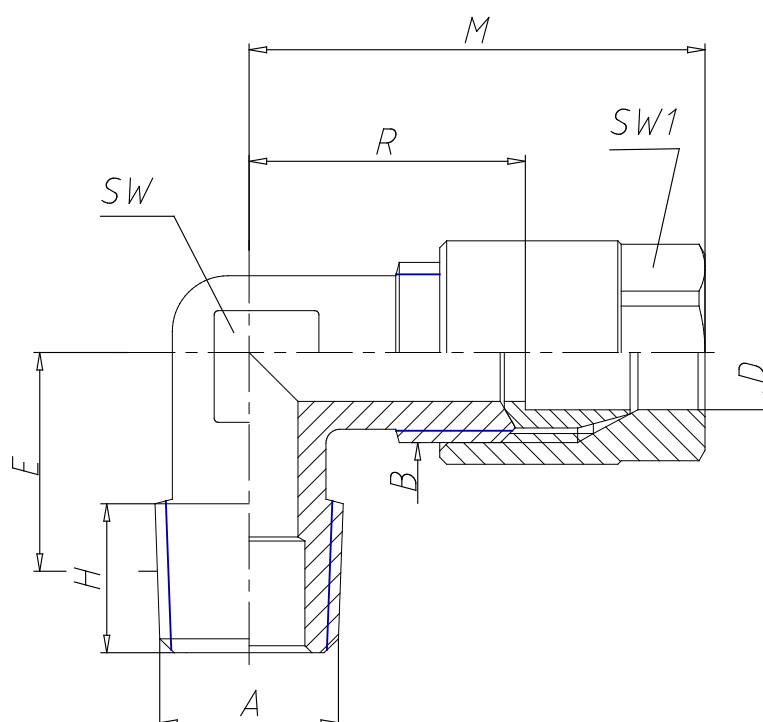


■ TECHNICAL DATA

Mod.	1020 12-3/8
------	-------------

- Fittings Mod. 1020

Product code: 1020 12-3/8



DIMENSIONS

D (mm)	12
B1	R3/8
B	M18x1,5
E (mm)	15.0
H (mm)	11.5
M (mm)	37.0
R (mm)	16.5
SW (mm)	15
SW1 (mm)	19
With bi-conical olive	Con ogiva biconica