

- Fittings Mod. 1050

Product code: 1050 12-3/8

Datasheet creation date: 10/03/2025 10:32

Check the most updated document online [click here](#)

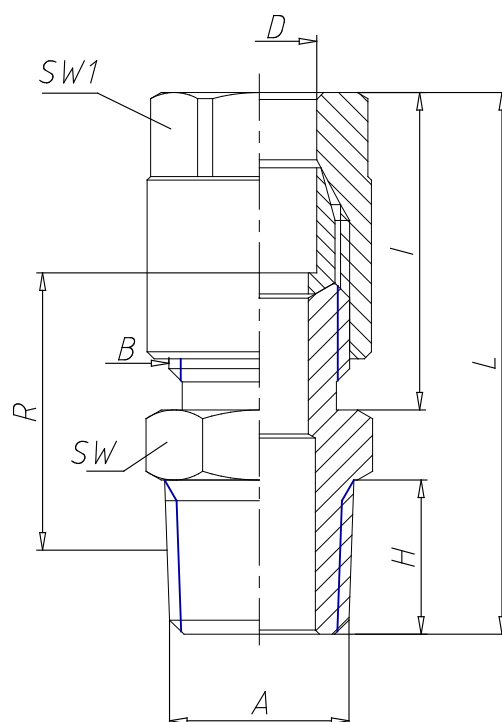


■ TECHNICAL DATA

Mod.	1050 12-3/8
------	-------------

- Fittings Mod. 1050

Product code: 1050 12-3/8



DIMENSIONS

D (mm)	12
A	R3/8
B	M18x1,5
H (mm)	11.5
I (mm)	24.5
L (mm)	41.0
R (mm)	12.0
SW (mm)	19
SW1 (mm)	19
With bi-conical olive	Con ogiva biconica