

## Minicylinders - Series 16 - 23 - 24 - 25

Product code: 16N2A08A224(63)

Datasheet creation date: 07/03/2025 18:00

Check the most updated document online [click here](#)

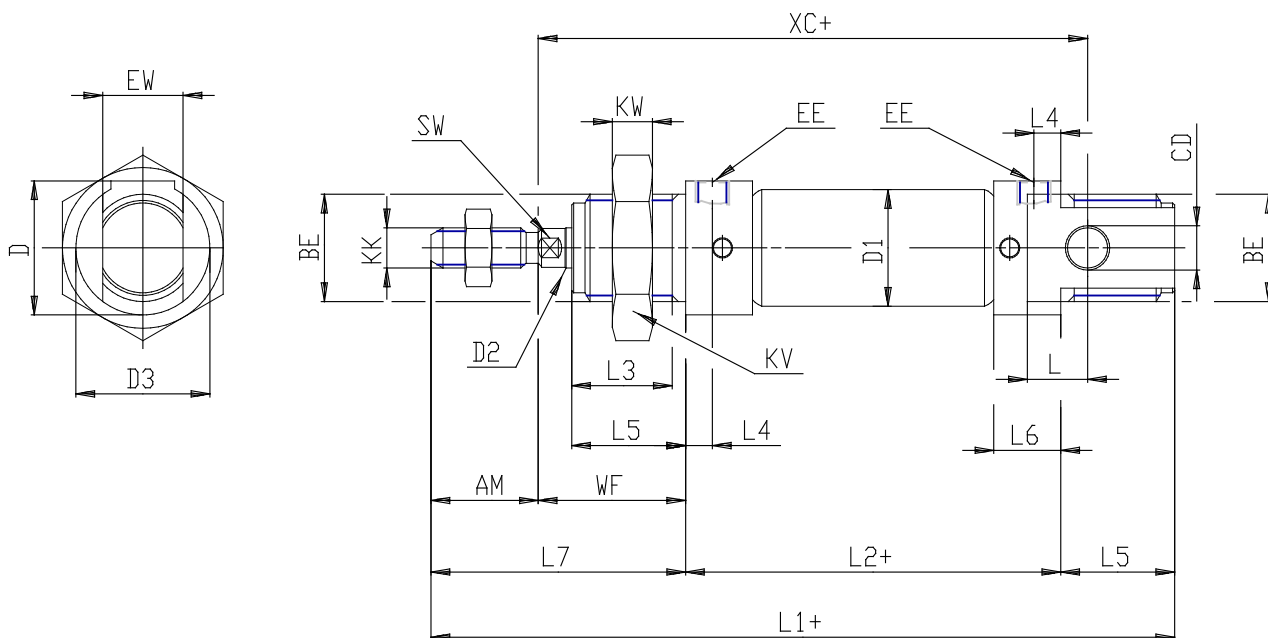


### TECHNICAL DATA

<b>Series (mm)</b>	16
<b>Bore (mm)</b>	8
<b>Version</b>	N = standard
<b>Operation</b>	2 = double acting
<b>Materials</b>	A = rolled stainless steel stem - stainless steel jacket
<b>Construction</b>	A = ring nut V + stem nut U
<b>Stroke type</b>	variable
<b>Stroke (mm)</b>	224
<b>Rod seals material</b>	= standard
<b>Extended rod (mm)</b>	63

## Minicylinders - Series 16 - 23 - 24 - 25

Product code: 16N2A08A224(63)



### DIMENSIONS

EW (mm)	8
KW (mm)	7
BE	M12x1,25
KK	M4x0.7
ØCD (mm)	4
D1 (mm)	9.3
EE	M5
ØD2 (mm)	4
L1 (mm)	373.0
XC (mm)	288
L2 (mm)	270.0
AM (mm)	12
L3 (mm)	10
L4 (mm)	4.5
L5 (mm)	12
L (mm)	6
WF (mm)	79
L6 (mm)	9
L7 (mm)	28
KV (mm)	19
SW (mm)	-
D (mm)	15.0
D3 (mm)	15