

Minicylinders - Series 16 - 23 - 24 - 25

Product code: 16N2A10A140(15)

Datasheet creation date: 07/03/2025 17:56

Check the most updated document online [click here](#)

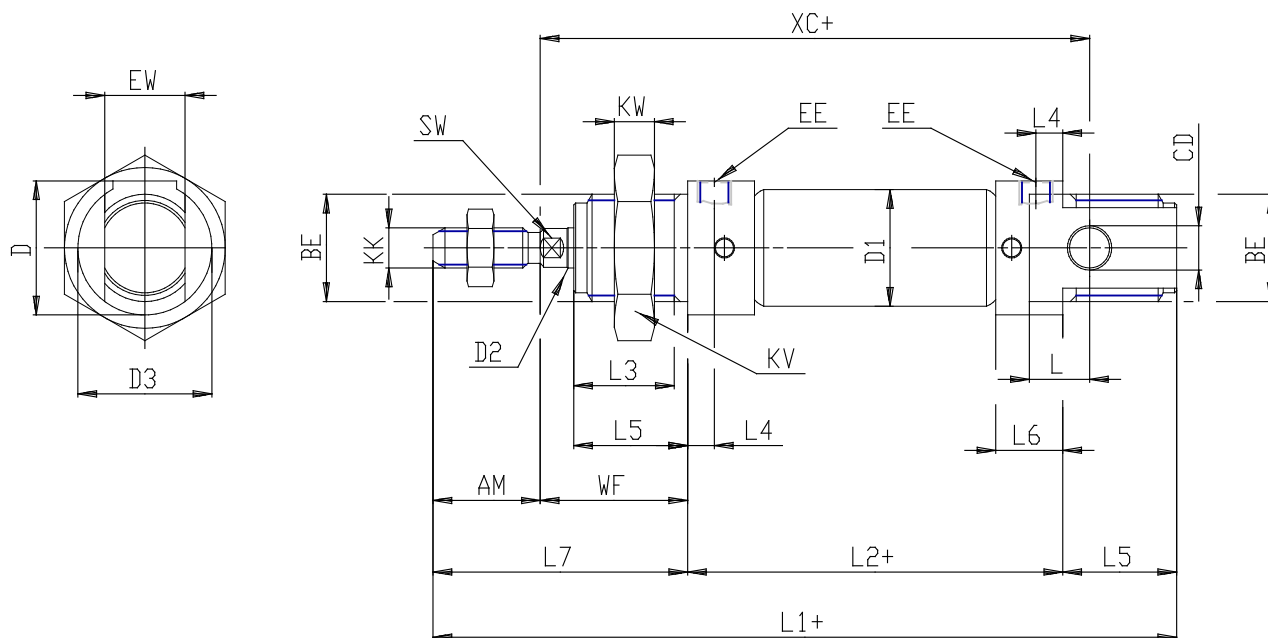


TECHNICAL DATA

Series (mm)	16
Bore (mm)	10
Version	N = standard
Operation	2 = double acting
Materials	A = rolled stainless steel stem - stainless steel jacket
Construction	A = ring nut V + stem nut U
Stroke type	variable
Stroke (mm)	140
Rod seals material	= standard
Extended rod (mm)	15

Minicylinders - Series 16 - 23 - 24 - 25

Product code: 16N2A10A140(15)



DIMENSIONS

EW (mm)	8
KW (mm)	7
BE	M12x1,25
KK	M4x0.7
ØCD (mm)	4
D1 (mm)	11.3
EE	M5
ØD2 (mm)	4
L1 (mm)	241.0
XC (mm)	204
L2 (mm)	186.0
AM (mm)	12
L3 (mm)	10
L4 (mm)	4.5
L5 (mm)	12
L (mm)	6
WF (mm)	31
L6 (mm)	9
L7 (mm)	28
KV (mm)	19
SW (mm)	-
D (mm)	15.0
D3 (mm)	15