

- Fittings Mod. 1703

Product code: 1703 12/10-M16X1

Datasheet creation date: 10/03/2025 10:44

Check the most updated document online [click here](#)

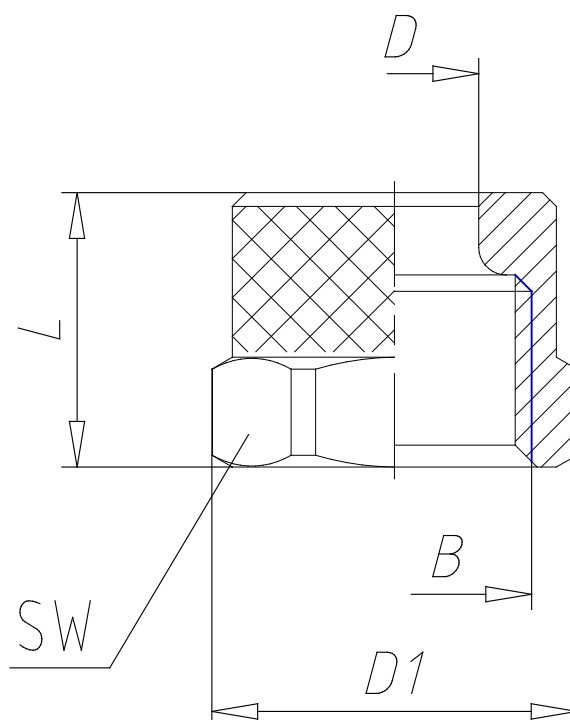


■ TECHNICAL DATA

Mod.	1703 12/10-M16X1
------	------------------

- Fittings Mod. 1703

Product code: 1703 12/10-M16X1



■ DIMENSIONS

Tube	12/10
B	M16x1
D (mm)	12.20
D1 (mm)	21.0
L (mm)	13.5
SW (mm)	19