

## Minicylinders - Series 16 - 23 - 24 - 25

Product code: 24N2A16A011

Datasheet creation date: 07/03/2025 18:06

Check the most updated document online [click here](#)

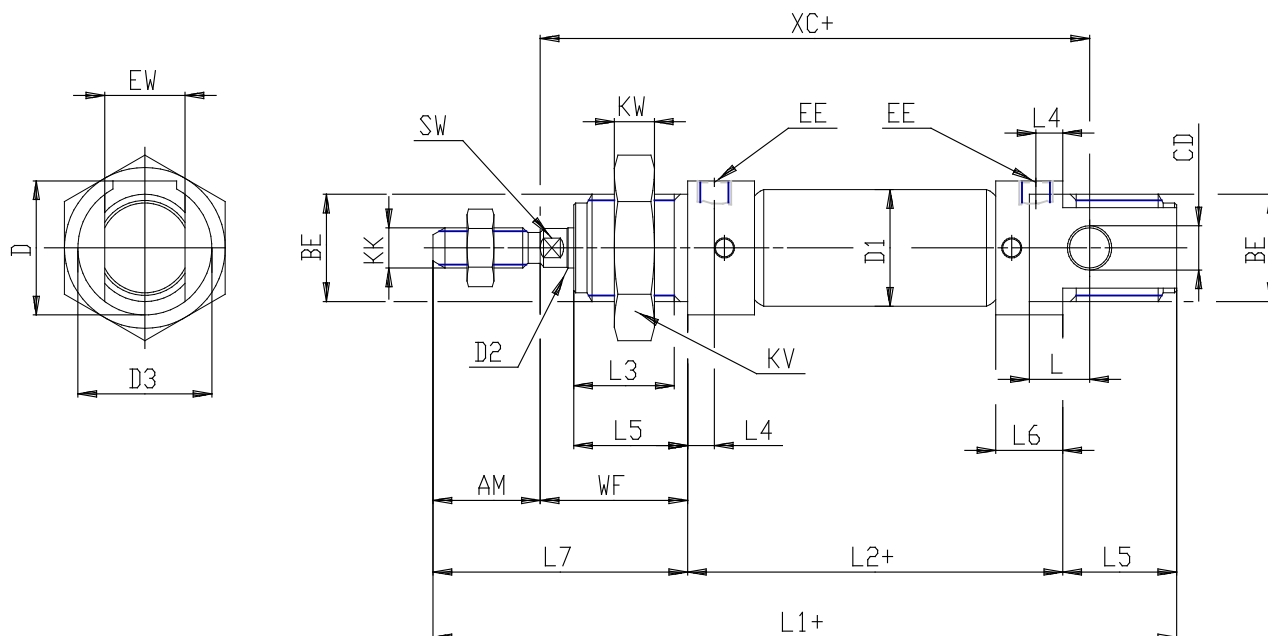


### TECHNICAL DATA

<b>Series (mm)</b>	24
<b>Bore (mm)</b>	16
<b>Version</b>	N = standard
<b>Operation</b>	2 = double acting
<b>Materials</b>	A = rolled stainless steel stem - stainless steel jacket
<b>Construction</b>	A = ring nut V + stem nut U
<b>Stroke type</b>	variable
<b>Stroke (mm)</b>	11
<b>Rod seals material</b>	= standard
<b>Extended rod (mm)</b>	0

## Minicylinders - Series 16 - 23 - 24 - 25

Product code: 24N2A16A011



### DIMENSIONS

EW (mm)	12
KW (mm)	8
BE	M16x1,5
KK	M6x1
ØCD (mm)	6
D1 (mm)	18.0
EE	M5
ØD2 (mm)	6
L1 (mm)	122.0
XC (mm)	93
L2 (mm)	67.0
AM (mm)	16
L3 (mm)	15
L4 (mm)	4.0
L5 (mm)	17
L (mm)	9
WF (mm)	22
L6 (mm)	10
L7 (mm)	38
KV (mm)	24
SW (mm)	5
D (mm)	20.5
D3 (mm)	20