

Minicylinders - Series 16 - 23 - 24 - 25

Product code: 24N2A16A025(15)

Datasheet creation date: 07/03/2025 18:06

Check the most updated document online [click here](#)

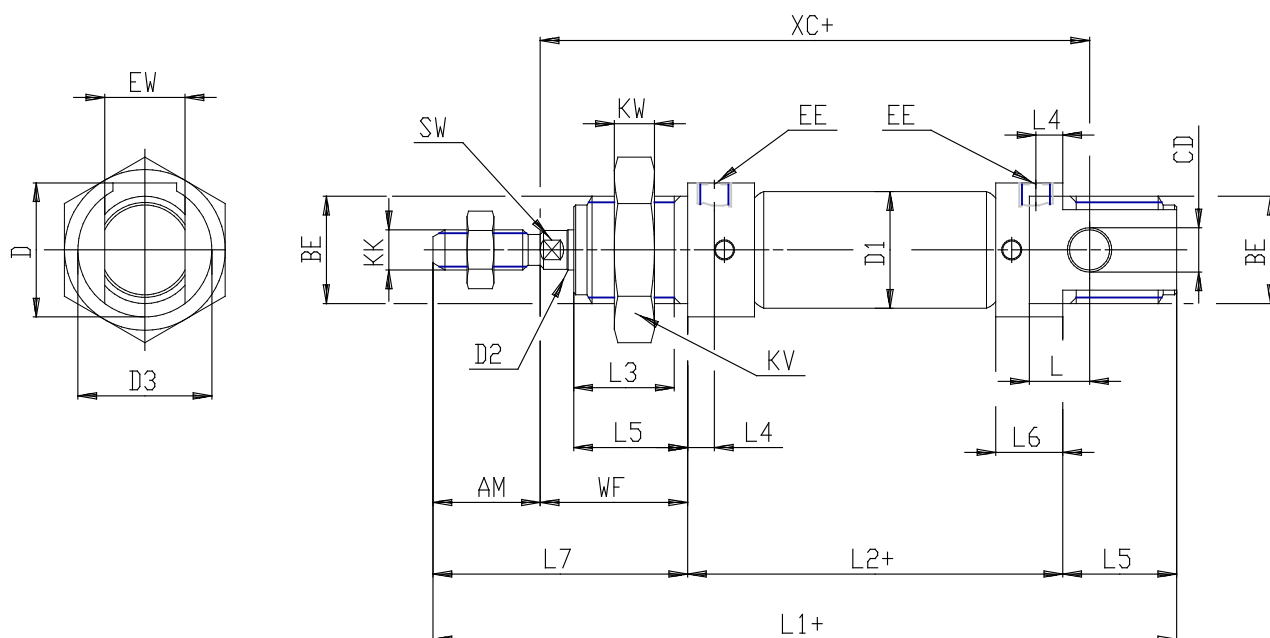


TECHNICAL DATA

Series (mm)	24
Bore (mm)	16
Version	N = standard
Operation	2 = double acting
Materials	A = rolled stainless steel stem - stainless steel jacket
Construction	A = ring nut V + stem nut U
Stroke type	standard
Stroke (mm)	25
Rod seals material	= standard
Extended rod (mm)	15

Minicylinders - Series 16 - 23 - 24 - 25

Product code: 24N2A16A025(15)



DIMENSIONS

EW (mm)	12
KW (mm)	8
BE	M16x1,5
KK	M6x1
ØCD (mm)	6
D1 (mm)	18.0
EE	M5
ØD2 (mm)	6
L1 (mm)	151.0
XC (mm)	107
L2 (mm)	81.0
AM (mm)	16
L3 (mm)	15
L4 (mm)	4.0
L5 (mm)	17
L (mm)	9
WF (mm)	37
L6 (mm)	10
L7 (mm)	38
KV (mm)	24
SW (mm)	5
D (mm)	20.5
D3 (mm)	20