

## Minicylinders - Series 16 - 23 - 24 - 25

Product code: 24N2A32A080

Datasheet creation date: 07/03/2025 18:30

Check the most updated document online [click here](#)

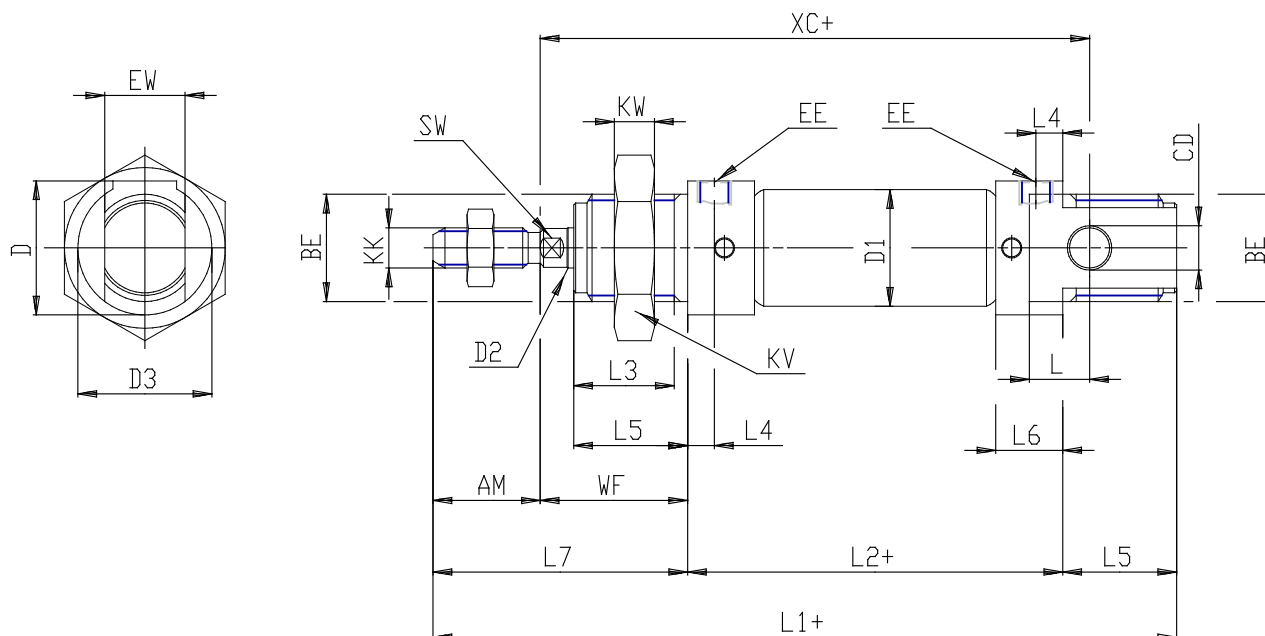


### TECHNICAL DATA

<b>Series (mm)</b>	24
<b>Bore (mm)</b>	32
<b>Version</b>	N = standard
<b>Operation</b>	2 = double acting
<b>Materials</b>	A = rolled stainless steel stem - stainless steel jacket
<b>Construction</b>	A = ring nut V + stem nut U
<b>Stroke type</b>	standard
<b>Stroke (mm)</b>	80
<b>Rod seals material</b>	= standard
<b>Extended rod (mm)</b>	0

## Minicylinders - Series 16 - 23 - 24 - 25

Product code: 24N2A32A080



### DIMENSIONS

EW (mm)	26
KW (mm)	8
BE	M30x1,5
KK	M10x1,25
ØCD (mm)	12
D1 (mm)	33.6
EE	G1/8
ØD2 (mm)	12
L1 (mm)	221.5
XC (mm)	185
L2 (mm)	149.0
AM (mm)	20
L3 (mm)	19
L4 (mm)	7.5
L5 (mm)	22
L (mm)	12
WF (mm)	28
L6 (mm)	15
L7 (mm)	48
KV (mm)	0
SW (mm)	10
D (mm)	36.5
D3 (mm)	35