

Minicylinders - Series 16 - 23 - 24 - 25

Product code: 25N2A25A320V

Datasheet creation date: 07/03/2025 18:49

Check the most updated document online [click here](#)

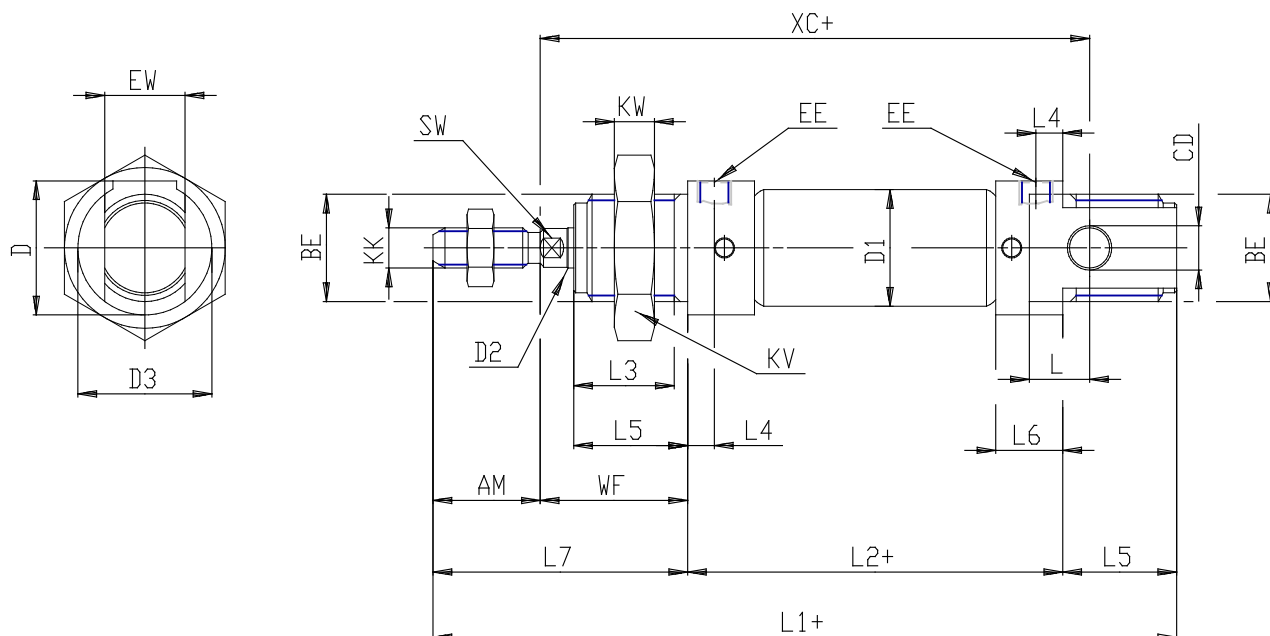


TECHNICAL DATA

| | |
|---------------------------|--|
| Series (mm) | 25 |
| Bore (mm) | 25 |
| Version | N = standard |
| Operation | 2 = double acting |
| Materials | A = rolled stainless steel stem - stainless steel jacket |
| Construction | A = ring nut V + stem nut U |
| Stroke type | standard |
| Stroke (mm) | 320 |
| Rod seals material | V = FKM rod seal |
| Extended rod (mm) | 0 |

Minicylinders - Series 16 - 23 - 24 - 25

Product code: 25N2A25A320V



DIMENSIONS

| | |
|----------|----------|
| EW (mm) | 16 |
| KW (mm) | 10 |
| BE | M22x1,5 |
| KK | M10x1,25 |
| ØCD (mm) | 8 |
| D1 (mm) | 27.0 |
| EE | G1/8 |
| ØD2 (mm) | 10 |
| L1 (mm) | 461.5 |
| XC (mm) | 424 |
| L2 (mm) | 389.5 |
| AM (mm) | 22 |
| L3 (mm) | 20 |
| L4 (mm) | 8.0 |
| L5 (mm) | 22 |
| L (mm) | 12 |
| WF (mm) | 28 |
| L6 (mm) | 16 |
| L7 (mm) | 50 |
| KV (mm) | 32 |
| SW (mm) | 9 |
| D (mm) | 27.0 |
| D3 (mm) | 27 |