

Minicylinders - Series 16 - 23 - 24 - 25

Product code: 25N2A32A032

Datasheet creation date: 07/03/2025 18:55

Check the most updated document online [click here](#)

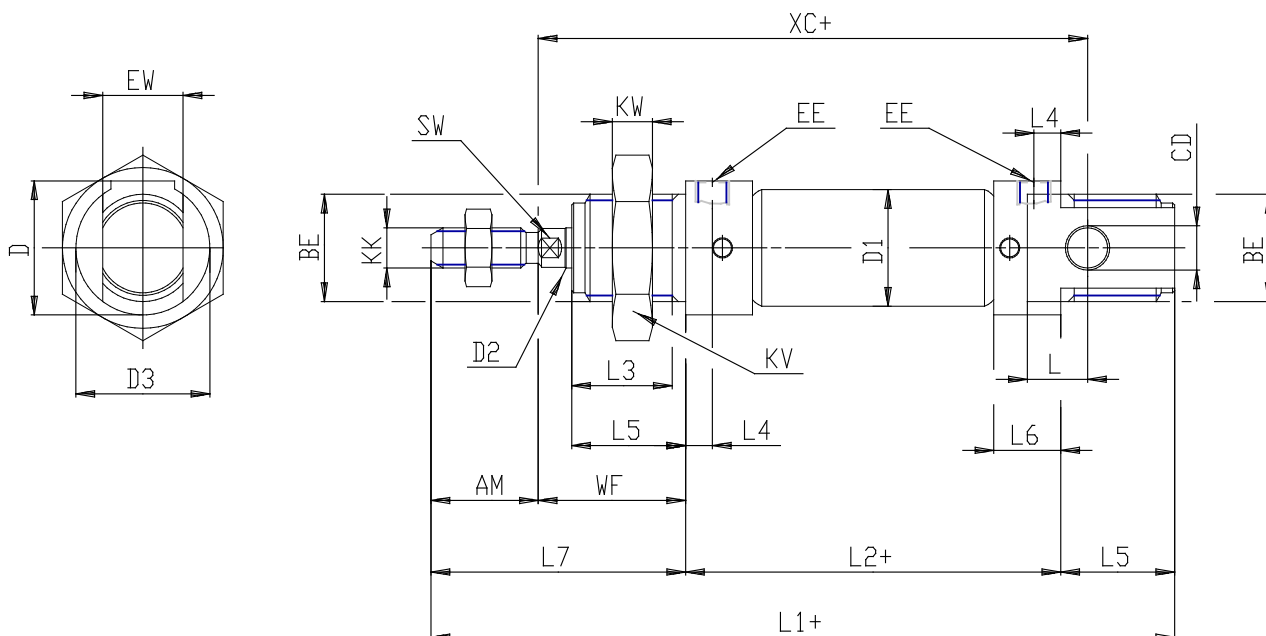


TECHNICAL DATA

Series (mm)	25
Bore (mm)	32
Version	N = standard
Operation	2 = double acting
Materials	A = rolled stainless steel stem - stainless steel jacket
Construction	A = ring nut V + stem nut U
Stroke type	variable
Stroke (mm)	32
Rod seals material	= standard
Extended rod (mm)	0

Minicylinders - Series 16 - 23 - 24 - 25

Product code: 25N2A32A032



DIMENSIONS

EW (mm)	26
KW (mm)	8
BE	M30x1,5
KK	M10x1,25
ØCD (mm)	12
D1 (mm)	33.6
EE	G1/8
ØD2 (mm)	12
L1 (mm)	173.5
XC (mm)	137
L2 (mm)	101.0
AM (mm)	20
L3 (mm)	19
L4 (mm)	7.5
L5 (mm)	22
L (mm)	12
WF (mm)	28
L6 (mm)	15
L7 (mm)	48
KV (mm)	0
SW (mm)	10
D (mm)	36.5
D3 (mm)	35