

## Silencers - Series 2921

Product code: 2921 1/8

Datasheet creation date: 10/03/2025 10:51

Check the most updated document online [click here](#)

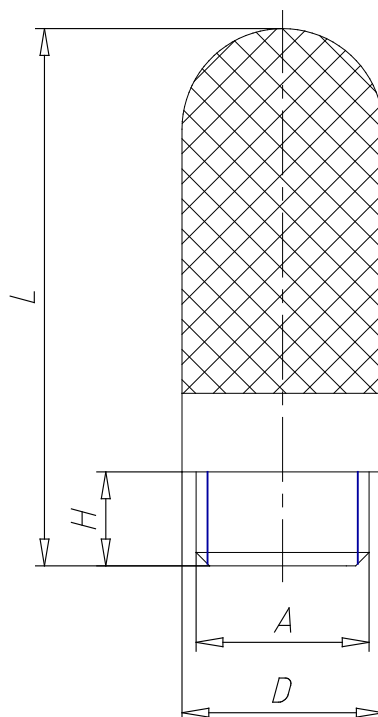


### TECHNICAL DATA

<b>Mod.</b>	2921 1/8
<b>Pressure range (Kg / cm<sup>2</sup> - bar)</b>	max. 10
<b>Flow rate (NI / min)</b>	1555
<b>Noise treshold (db (A))</b>	78

## Silencers - Series 2921

Product code: 2921 1/8



### **DIMENSIONS**

<b>A</b>	G1/8
<b>D (mm)</b>	11.5
<b>H (mm)</b>	4.5
<b>L (mm)</b>	21.5
<b>(mm)</b>	8