

Silencers - Series 2928

Product code: 2928 1/8

Datasheet creation date: 10/03/2025 10:51

Check the most updated document online [click here](#)

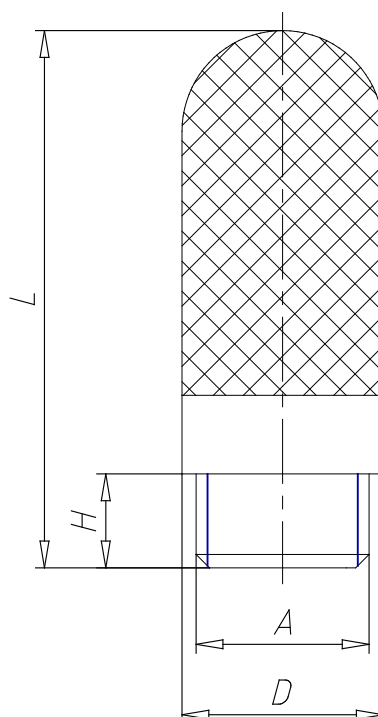


TECHNICAL DATA

Mod.	2928 1/8
Pressure range (Kg / cm² - bar)	max. 10
Flow rate (NI / min)	1450
Noise treshold (db (A))	67

Silencers - Series 2928

Product code: 2928 1/8



DIMENSIONS

A	G1/8
D (mm)	12.9
H (mm)	6.5
L (mm)	34.5