

## Silencers - Series 2929

Product code: 2929 12

Datasheet creation date: 10/03/2025 10:51

Check the most updated document online [click here](#)

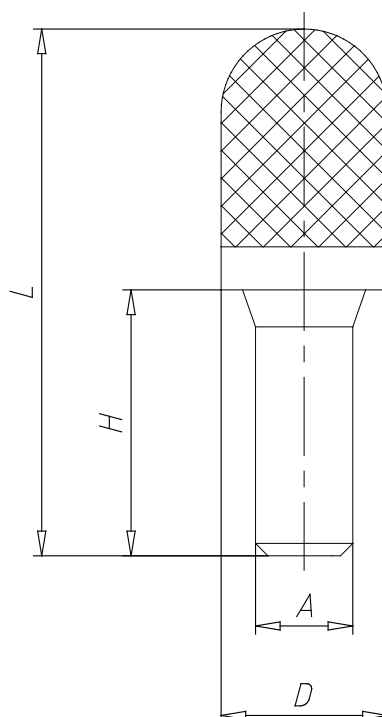


### TECHNICAL DATA

<b>Mod.</b>	2929 12
<b>Pressure range (Kg / cm<sup>2</sup> - bar)</b>	max. 10
<b>Flow rate (NI / min)</b>	4200
<b>Noise treshold (db (A))</b>	94

## Silencers - Series 2929

Product code: 2929 12



### **DIMENSIONS**

<b>A (mm)</b>	12
<b>D (mm)</b>	18.5
<b>H (mm)</b>	29.0
<b>L (mm)</b>	83.0