

Silencers - Series 2929

Product code: 2929 8

Datasheet creation date: 10/03/2025 10:51

Check the most updated document online [click here](#)

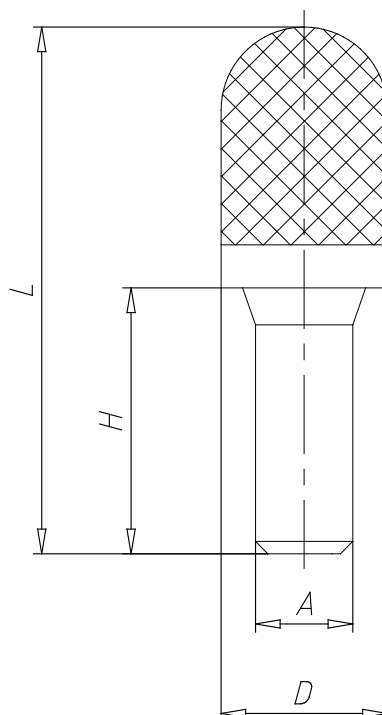


TECHNICAL DATA

Mod.	2929 8
Pressure range (Kg / cm ² - bar)	max. 10
Flow rate (NI / min)	1300
Noise treshold (db (A))	83

Silencers - Series 2929

Product code: 2929 8



DIMENSIONS

A (mm)	8
D (mm)	13.5
H (mm)	21.5
L (mm)	43.5