

Silencers - Series 2931

Product code: 2931 1/2

Datasheet creation date: 10/03/2025 10:51

Check the most updated document online [click here](#)

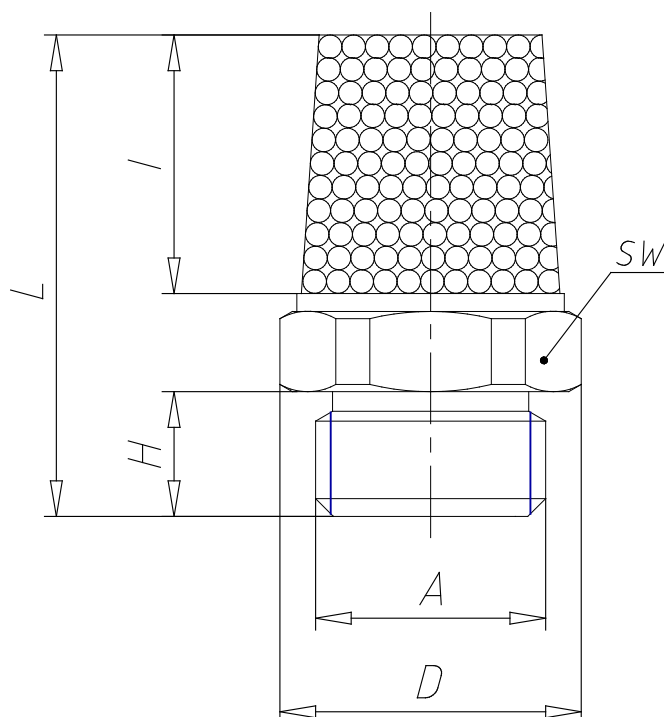


TECHNICAL DATA

Mod.	2931 1/2
Pressure range (Kg / cm ² - bar)	max. 10
Flow rate (NI / min)	6800
Noise treshold (db (A))	87

Silencers - Series 2931

Product code: 2931 1/2



DIMENSIONS

A	G1/2
D (mm)	24.5
H (mm)	8.0
I (mm)	28.0
L (mm)	42.0
SW (mm)	23