

3/2-way valve, G1/8 and G1/4 port, bistable - Serie 3

Product code: 338-033

Datasheet creation date: 10/03/2025 11:02

Check the most updated document online [click here](#)

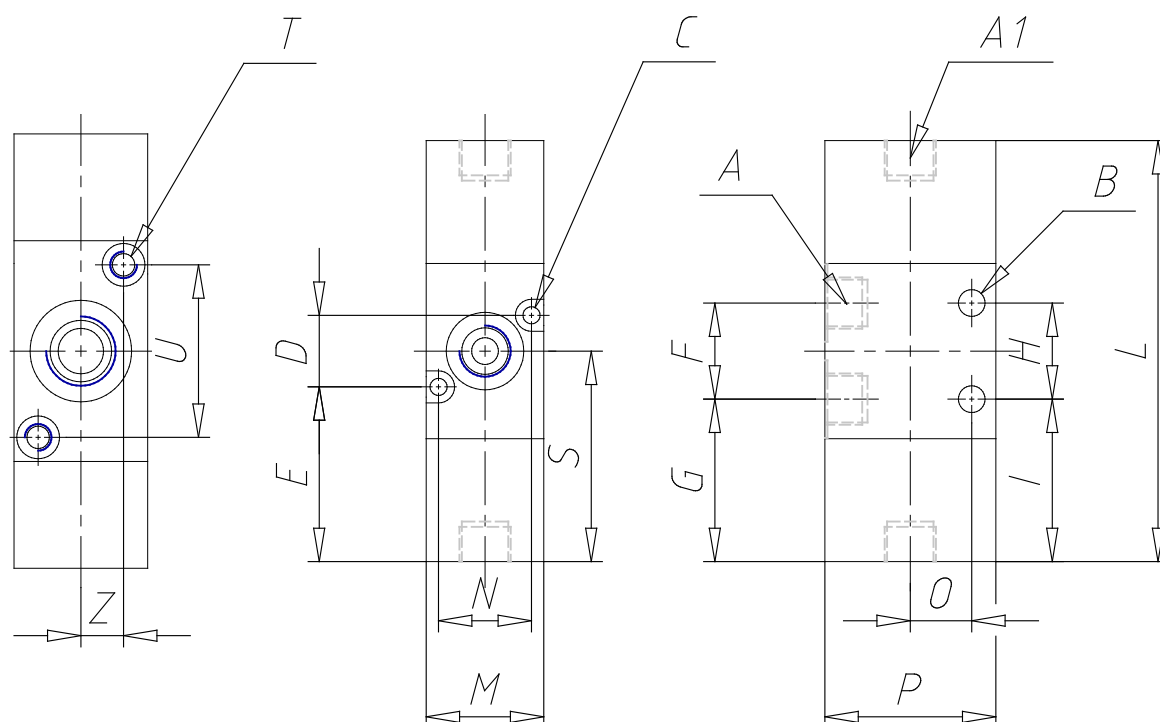


TECHNICAL DATA

Mod.	338-033
Mounting	Without base
Function	3/2 NC
Flow rate	700
P. min pilot. (bar)	2.5

3/2-way valve, G1/8 and G1/4 port, bistable - Serie 3

Product code: 338-033



DIMENSIONS

A	G1/8
A1	G1/8
B (mm)	5
C (mm)	-
D (mm)	-
E (mm)	-
F (mm)	18
G (mm)	30.40
H (mm)	18
I (mm)	30.40
L (mm)	78.8
M (mm)	22
N (mm)	-
O (mm)	11.5
P (mm)	32
S (mm)	41.70
T (mm)	-
U (mm)	-
Z (mm)	-