

## 3/2-way valve, G1/8 and G1/4 port, monostable - Series 3

Product code: 338-035

Datasheet creation date: 10/03/2025 11:02

Check the most updated document online [click here](#)

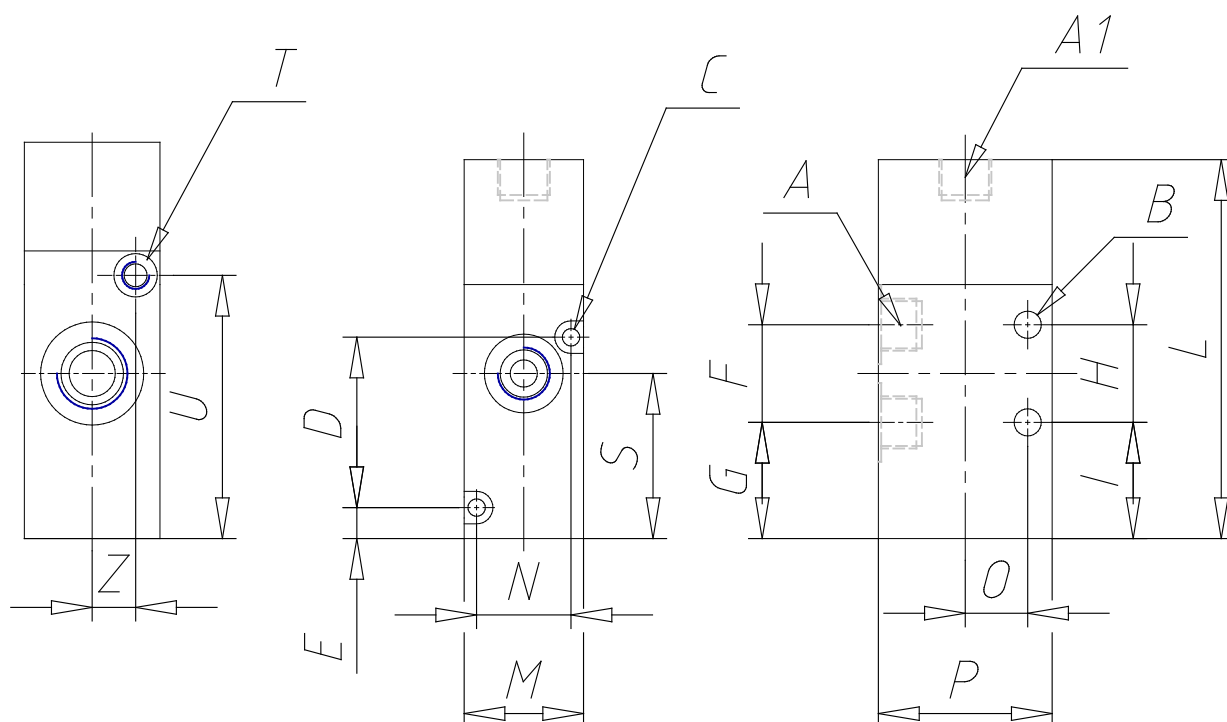


### TECHNICAL DATA

<b>Mod.</b>	338-035
<b>Mounting</b>	Without base
<b>Function</b>	3/2 NC
<b>Flow rate</b>	700
<b>P. min pilot. (bar)</b>	3

### 3/2-way valve, G1/8 and G1/4 port, monostable - Series 3

Product code: 338-035



#### DIMENSIONS

A	G1/8
A1	G1/8
B (mm)	5
C (mm)	-
D (mm)	-
E (mm)	5.7
F (mm)	18
G (mm)	21.40
H (mm)	18
I (mm)	21.40
L (mm)	69.8
M (mm)	22
N (mm)	-
O (mm)	11.5
P (mm)	32
S (mm)	30.40
T	-
U (mm)	-
Z (mm)	-