

2 x 3/2-way solenoid valve, G1/8 - Series 3

Product code: 338D-015-02-U77

Datasheet creation date: 10/03/2025 10:59

Check the most updated document online [click here](#)

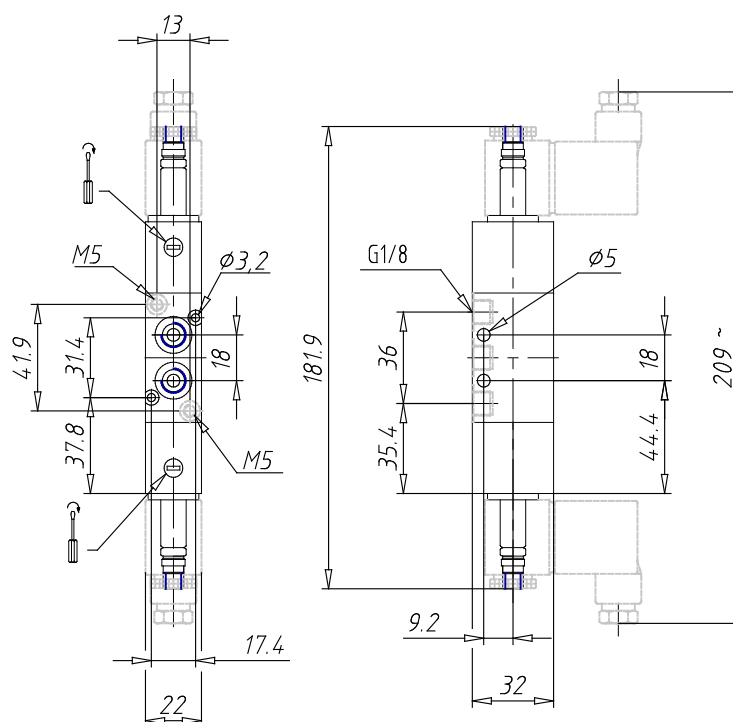


TECHNICAL DATA

Mod.	338D-015-02
Function	2 x 3/2 NC
Flow rate (NI/min)	700
Operating pressure	2,5 ÷ 10
Pilot pressure	-
Manual override	= bistable standard
Dimensions of the solenoid	U7 = PET / 22 x 22
Solenoid voltage	7 = 24 V DC

2 x 3/2-way solenoid valve, G1/8 - Series 3

Product code: 338D-015-02-U77



DIMENSIONS

Mod.	338D-015-02
Function	2 x 3/2 NC
Flow rate (NI/min)	700
Operating pressure	2,5 ÷ 10
Pilot pressure	-
Manual override	= bistable standard
Dimensions of the solenoid	U7 = PET / 22 x 22
Solenoid voltage	7 = 24 V DC