

2 x 3/2-way solenoid valve, G1/8 - Series 3

Product code: 338D-E15-02

Datasheet creation date: 10/03/2025 10:59

Check the most updated document online [click here](#)

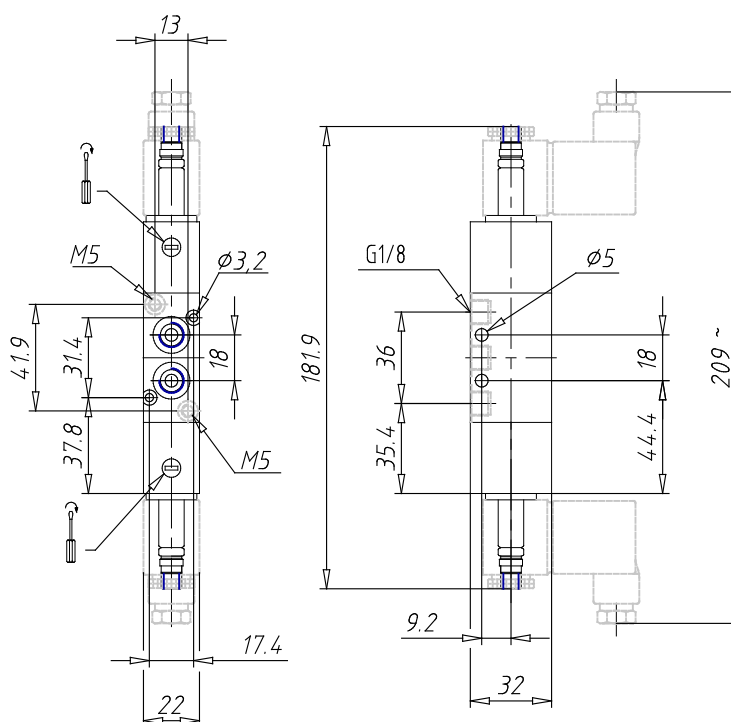


TECHNICAL DATA

Mod.	338D-E15-02
Function	2 x 3/2 NC
Flow rate (Nl/min)	700
Operating pressure	-0,9 ÷ 10
Pilot pressure	2,5 ÷ 10
Manual override	= bistable standard
Dimensions of the solenoid	No solenoid
Solenoid voltage	

2 x 3/2-way solenoid valve, G1/8 - Series 3

Product code: 338D-E15-02



DIMENSIONS

Mod.	338D-E15-02
Function	2 x 3/2 NC
Flow rate (NI/min)	700
Operating pressure	-0,9 ÷ 10
Pilot pressure	2,5 ÷ 10
Manual override	= bistable standard
Dimensions of the solenoid	No solenoid
Solenoid voltage	