

5/2-way valve, G1/8 and G1/4 port, monostable - Series 3

Product code: 354-035

Datasheet creation date: 10/03/2025 10:58

Check the most updated document online [click here](#)

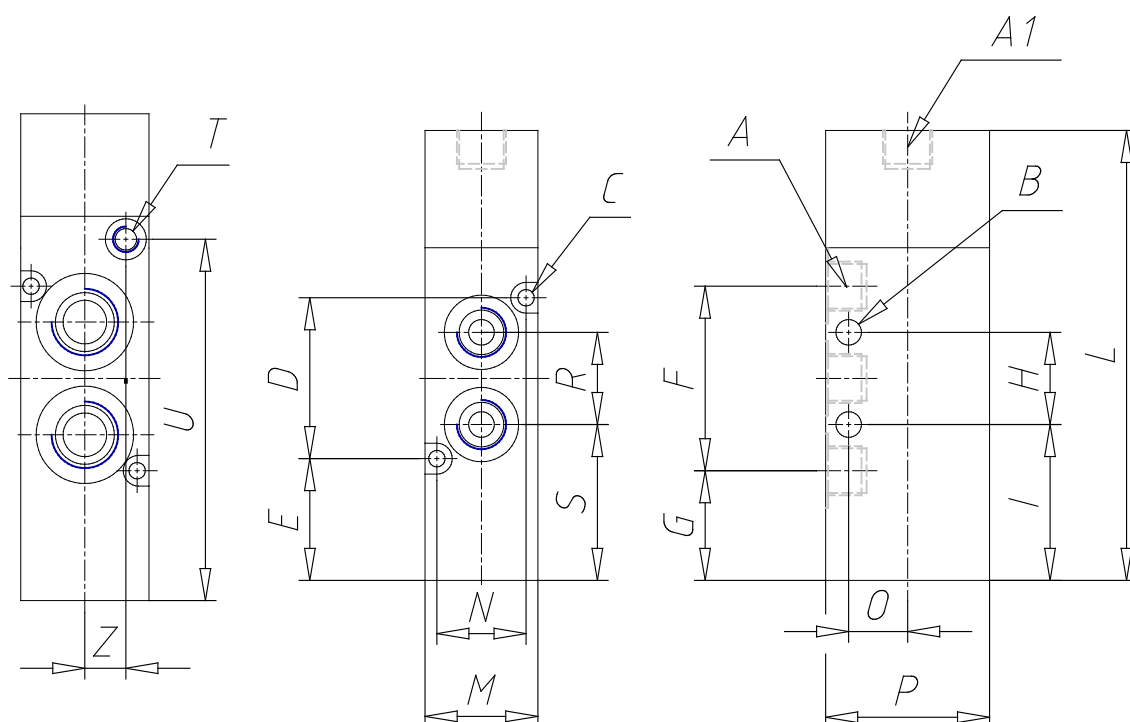


TECHNICAL DATA

| | |
|----------------------------|--------------------|
| Mod. | 354-035 |
| Mounting | Without base/conv. |
| Function | 3/2 NC |
| Flow rate | 1300 |
| P. min pilot. (bar) | 3 |

5/2-way valve, G1/8 and G1/4 port, monostable - Series 3

Product code: 354-035



DIMENSIONS

| | |
|-------------------|-------|
| A | G1/4 |
| A1 | - |
| B (mm) | 4.1 |
| C (mm) | 3.2 |
| D (mm) | 36 |
| E (mm) | 25.4 |
| F (mm) | 44 |
| G (mm) | 21.40 |
| H (mm) | 22 |
| I (mm) | 30.40 |
| L (mm) | 95.0 |
| M (mm) | 25 |
| N (mm) | 21 |
| O (mm) | 16 |
| P (mm) | 40 |
| heavy (mm) | 32.40 |
| T (mm) | M5 |
| U (mm) | 70.5 |
| Z (mm) | 8 |