

5/2-way solenoid valve, G1/8, bistable - Mod. 358... - Serie 3

Product code: 358-011-02-G7H

Datasheet creation date: 10/03/2025 11:00

Check the most updated document online [click here](#)

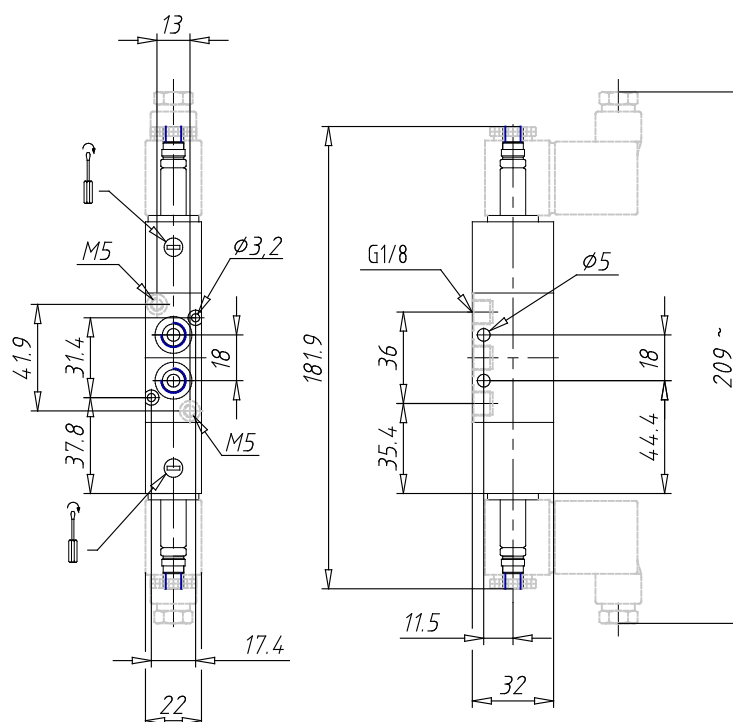


TECHNICAL DATA

Mod.	358-011-02
Function	5/2
Flow rate (Nl/min)	700
Operating pressure	1,5 ÷ 10
Pilot pressure	-
Manual override	= bistabile standard
Dimensions of the solenoid	G7 = PA / 22 x 22
Solenoid voltage	H = 12 V DC

5/2-way solenoid valve, G1/8, bistable - Mod. 358... - Serie 3

Product code: 358-011-02-G7H



DIMENSIONS

Mod.	358-011-02
Function	5/2
Flow rate (NI/min)	700
Operating pressure	1,5 ÷ 10
Pilot pressure	-
Manual override	= bistabile standard
Dimensions of the solenoid	G7 = PA / 22 x 22
Solenoid voltage	H = 12 V DC