

5/2-way solenoid valve, G1/8, bistable - Mod. 358... - Serie 3

Product code: 358-011-02-G7J

Datasheet creation date: 10/03/2025 11:00

Check the most updated document online [click here](#)

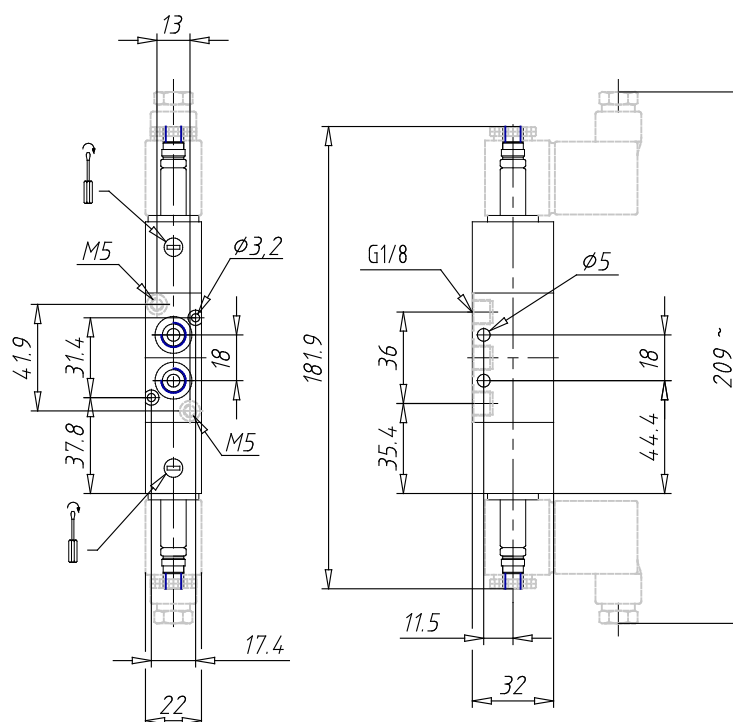


TECHNICAL DATA

| | |
|-----------------------------------|----------------------|
| Mod. | 358-011-02 |
| Function | 5/2 |
| Flow rate (NI/min) | 700 |
| Operating pressure | 1,5 ÷ 10 |
| Pilot pressure | - |
| Manual override | = bistabile standard |
| Dimensions of the solenoid | G7 = PA / 22 x 22 |
| Solenoid voltage | J = 230V - 50/60Hz |

5/2-way solenoid valve, G1/8, bistable - Mod. 358... - Serie 3

Product code: 358-011-02-G7J



DIMENSIONS

| | |
|-----------------------------------|----------------------|
| Mod. | 358-011-02 |
| Function | 5/2 |
| Flow rate (NI/min) | 700 |
| Operating pressure | 1,5 ÷ 10 |
| Pilot pressure | - |
| Manual override | = bistabile standard |
| Dimensions of the solenoid | G7 = PA / 22 x 22 |
| Solenoid voltage | J = 230V - 50/60Hz |