

5/2-way solenoid valve, G1/8, bistable - Mod. 358... - Serie 3

Product code: 358-011-02IL

Datasheet creation date: 10/03/2025 11:00

Check the most updated document online [click here](#)

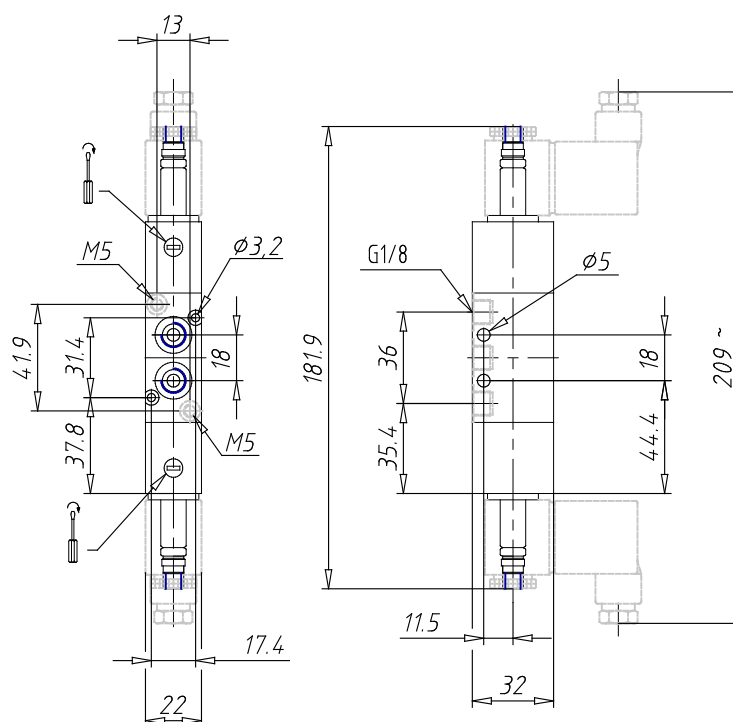


TECHNICAL DATA

Mod.	358-011-02IL
Function	5/2
Flow rate (NI/min)	F
Operating pressure	1,5 ÷ 10
Pilot pressure	1,5 ÷ 10
Manual override	= bistabile standard
Dimensions of the solenoid	No solenoid
Solenoid voltage	

5/2-way solenoid valve, G1/8, bistable - Mod. 358... - Serie 3

Product code: 358-011-02IL



DIMENSIONS

Mod.	358-011-02IL
Function	5/2
Flow rate (NI/min)	F
Operating pressure	1,5 ÷ 10
Pilot pressure	1,5 ÷ 10
Manual override	= bistabile standard
Dimensions of the solenoid	No solenoid
Solenoid voltage	