

## 5/2-way valve, G1/8 and G1/4 port, bistable - Series 3

Product code: 358-033

Datasheet creation date: 10/03/2025 11:02

Check the most updated document online [click here](#)

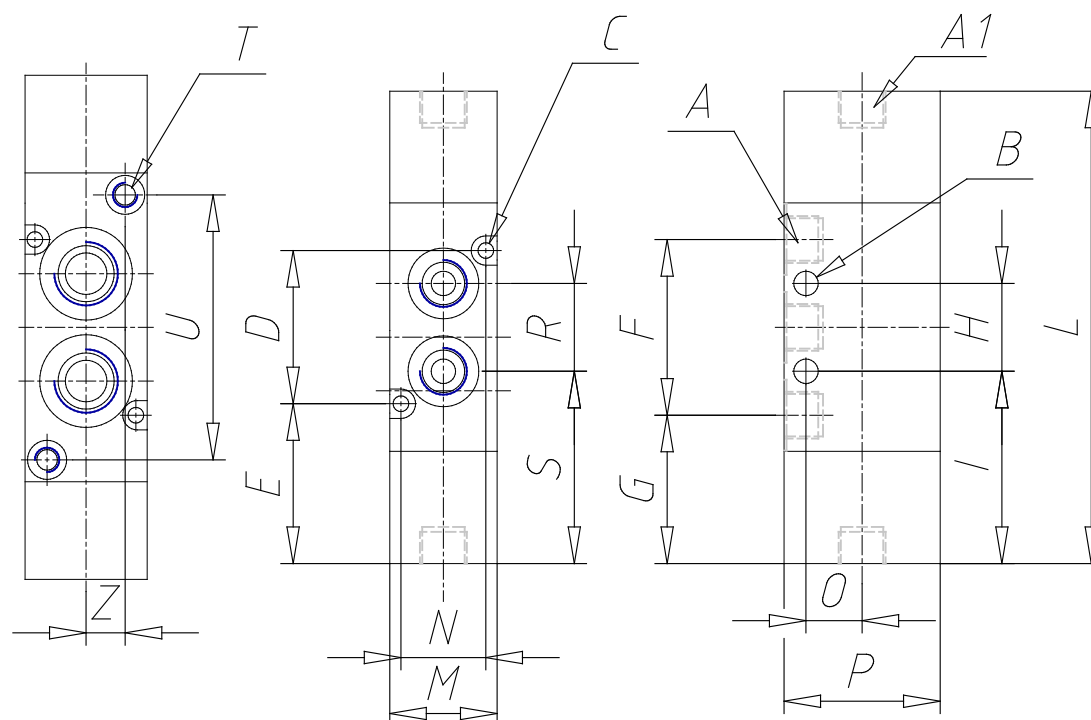


### TECHNICAL DATA

<b>Mod.</b>	358-033
<b>Mounting</b>	Without base/conv.
<b>Function</b>	5/2
<b>Flow rate</b>	700
<b>P. min pilot. (bar)</b>	2.5

## 5/2-way valve, G1/8 and G1/4 port, bistable - Series 3

Product code: 358-033



### DIMENSIONS

<b>A</b>	G1/8
<b>A1</b>	G1/8
<b>B (mm)</b>	5
<b>C (mm)</b>	3.2
<b>D (mm)</b>	31.4
<b>E (mm)</b>	32.8
<b>F (mm)</b>	36
<b>G (mm)</b>	30.40
<b>H (mm)</b>	18
<b>I (mm)</b>	39.40
<b>L (mm)</b>	96.8
<b>M (mm)</b>	22
<b>N (mm)</b>	17.4
<b>O (mm)</b>	11.5
<b>P (mm)</b>	32
<b>S (mm)</b>	39.40
<b>T (mm)</b>	-
<b>U (mm)</b>	-
<b>Z (mm)</b>	-