

5/2-way valve, G1/8 and G1/4 port, bistable - Series 3

Product code: 374-033

Datasheet creation date: 10/03/2025 10:58

Check the most updated document online [click here](#)

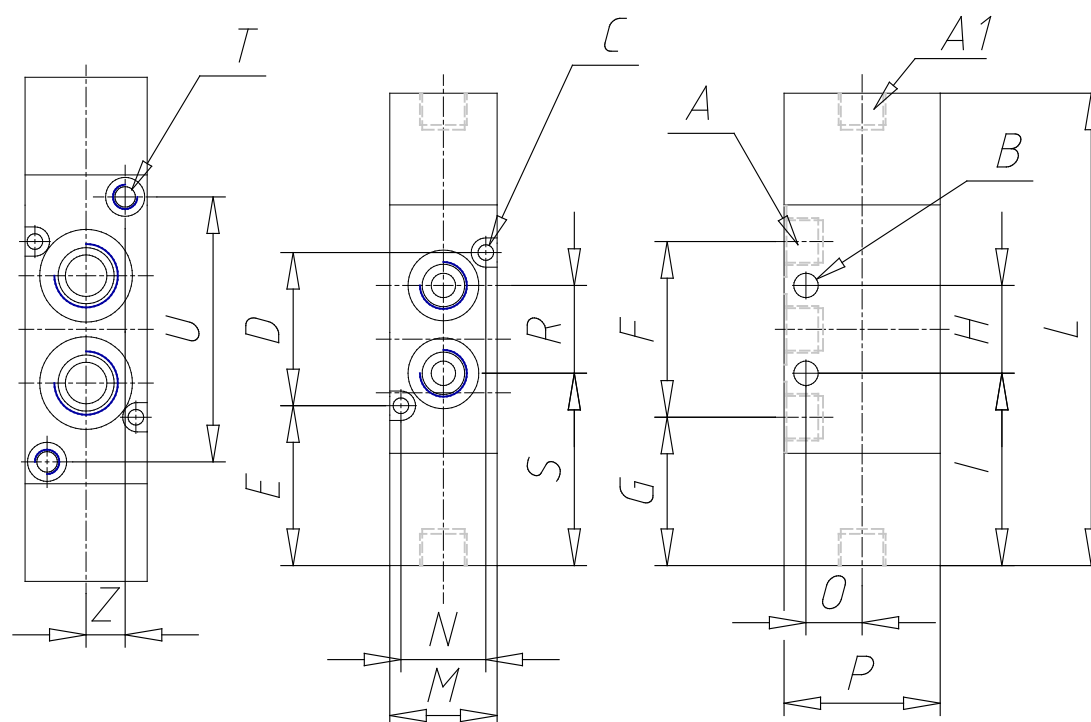


TECHNICAL DATA

Mod.	374-033
Mounting	Without base/conv.
Function	5/3
Flow rate	1200
P. min pilot. (bar)	2.5

5/2-way valve, G1/8 and G1/4 port, bistable - Series 3

Product code: 374-033



DIMENSIONS

A	G1/4
A1	-
B (mm)	4.1
C (mm)	3.2
D (mm)	36
E (mm)	33.7
F (mm)	44
G (mm)	29.70
H (mm)	22
I (mm)	40.70
L (mm)	103.3
M (mm)	25
N (mm)	21
O (mm)	16
P (mm)	40
S (mm)	40.70
T (mm)	M5
U (mm)	54.3
Z (mm)	8